



DOOR TECHNOLOGY – ORDER CATALOG | SECTION 03.3



SECURY Automatic Door Lock & Gripset Handle



Securing technology for you





03.3

SECURY Automatic Door Lock & Gripset Handle

- SECURY Automatic Door Lock 03.3.3
- Automatic Extension 03.3.4
- Filler Pieces 03.3.5
- Mortise Door lock 03.3.6
- BERKELEY Gripset Handle 03.3.7
- BERLIN Gripset Handle 03.3.8
- Smart locks 03.3.10
- Strike Plates 03.3.13
- Accessories 03.3.16
- Wood Display 03.3.24



USE WITH GRIPSET HANDLES ONLY

SECURY Automatic Door Lock for Gripset Handle

Description	Backset	Color	PU	Part Number
Door lock for 6' 8" doors	60mm	SS	5	6-35185-01-R-8B
Door lock for 8' doors	60mm	SS	5	6-35185-02-R-8B
Door lock for 6' 8" doors	70mm	SS	5	6-35185-05-R-8B
Door lock for 8' doors	70mm	SS	5	6-35185-06-R-8B

PU = Packaging Unit

Simply Close the Door!

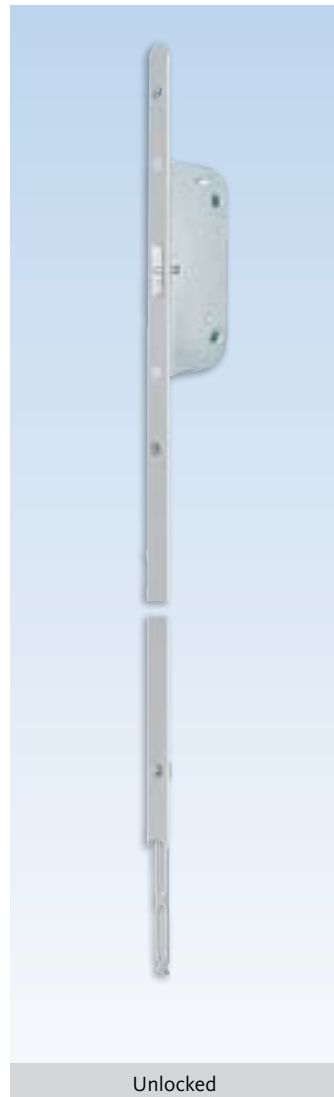
As soon as the door pulled shut, the Automatic latchbolts instantly throw 20mm and are secured to prevent them being forced back. By turning the key or the knob, the center deadbolt will engage and lock the top and bottom latchbolts to become a **3-deadbolt locking system**.

Additional information

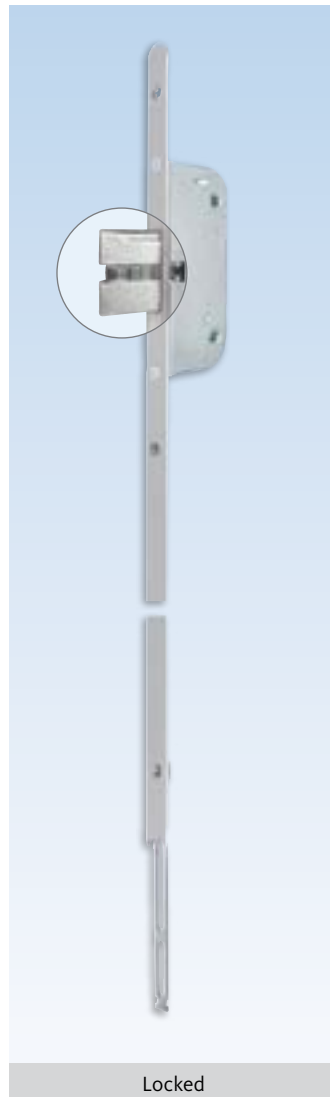
- 3-point, one piece locking system for 6' 8" and 8' doors
- Heavy duty mortise construction
- Locking by US-cylinder with 90° turn of key or thumb-turn
- No lifting of handle to engage locking points
- Top and bottom Automatic latchbolt projection from 10 to 20mm:
 - Provides security
 - Protects the door
- 1" (25mm) draw on deadbolt with baby sitting function
- Non handed, latch easily reversible
- 8mm square spindle
- 92mm centres (spindle to cylinder)
- Handle height variable (36" recommended)
- 16mm stainless steel faceplate with radius ends for easy installation and cleaner look
- Same hardware groove detail throughout our entire door lock program (jig, router base and bits available)
- Extension with additional lock point is available for doors taller than 8'
- To be used only with FERCO gripset handle

Filler pieces

Round to square



Unlocked



Locked

Extension with Additional Latchbolt

Description	Color	PU	Part Number
525mm extension with rounded end	Stainless Steel	5	6-33479-04-0-8B
800mm extension with rounded end	Stainless Steel	1	6-C5078-00-0-8B
* = Color		PU = Packaging Unit	

Additional information

- Tapered latch always engaging in strike plate
- 16mm stainless steel faceplate with radius end for easy installation and cleaner look
- Additional locking point for doors taller than 8'
- To be used with GU-SECURY Automatic door Locks

03
3



Filler Pieces

Description	PU	Part Number
Filler piece 193,7mm	1	9-C4340-19-0-8B
Filler piece 245,9mm	1	9-C4342-24-0-8B
Filler piece 342,3mm	1	9-C4342-34-0-8B

Additional information

- Made of stainless steel
- To be used with radius end locks and extensions

Formulas to select filler length:

- Bottom:
L = Handle height - 671,7mm
- Top 1590mm lock:
L = Door height - handle height - extension(s) length - 920,7mm
- Top 1900mm lock:
L = Door height - handle height - extension(s) length - 1230,7mm

03
3

Mortise Door Lock

with Latch and Deadbolt



BERKELEY

Solid Brass Gripset Handle



Unlocked



Locked

Mortise Door Lock for Gripset Handle

Description	Color	PU	Part Number
Gripset Mortise door lock	Stainless Steel	10	6-C4888-60-0-8B
Gripset Mortise door lock	Stainless Steel	10	6-C4888-70-0-8B
* = Color		PU = Packaging Unit	

Additional information

- Heavy duty mortise construction with reinforced lever return spring system
- Locking by US-cylinder with 90° turn of key or thumb-turn to engage the 1" (25mm) deadbolt
- Non-handed, latch easily reversible
- 8mm square spindle
- 92mm centres (spindle to cylinder)
- 16mm stainless steel faceplate with radius ends for easy installation and cleaner look
- Same hardware groove detail throughout our entire door lock program (jig, router base and bits available)
- Ideal for exterior and interior door applications
- To be used only with FERCO gripset handle

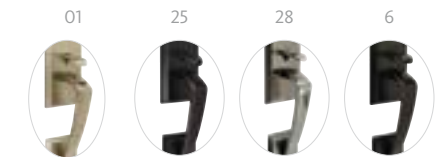
03
3



BERKELEY Series

Description	PU	Part Number
Gripset active for 45mm (1 3/4") thick door (cylinder included)	1	K-C2070-00-0-*
Gripset Dummy	1	K-C2071-00-0-*
Grip set for smart lock TEDEE	1	K-C2070-T1-0-*
* = Color		PU = Packaging Unit

01 = Satin Nickel, 25 = Dark Bronze, 28 = Pewter, 6 = Black



Additional information

- Solid forged brass
- US-cylinder with standard Schlage "C" keyway
- 90° locking with thumb-turn
- Non-handed
- Easy to install
- Weather proof gasket
- Stainless steel set screw on interior lever to secure handle
- Easily converts to inactive handle, using dummy conversion kit K-C2056-00-0-*
- For 1 3/4" thick doors
- For 2 1/4" thick doors, use actuator conversion kit K-C2054-57-0-0
- Use with SECURY Automatic gears: 6-35185-01-R-8B and 6-35185-02-R-8B
- Compatible with TEDEE smart locks
- The customer cannot prepare the plates to install the TEDEE adapters
- Jig template available for handle hole cutout. See tools catalogue for details

03
3

BERLIN

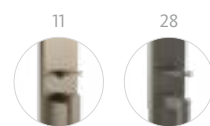
Solid Brass Gripset Handle



BERLIN Series

Description	PU	Part Number
Gripset active for 45mm (1 3/4") thick door (cylinder included)	1	K-C2080-00-0-*
Gripset Dummy	1	K-C2081-00-0-*
Gripset for TEDEE smart lock	1	K-C2080-T1-0-*
* = Color		PU = Packaging Unit

11 = Satin Nickel, 28 = Pewter



Additional information

- Solid forged brass
- US-cylinder with standard Schlage "C" keyway
- New snapping mechanism for the 90 deg locking with thumb-turn
- Improved springload mechanism for interior lever handle
- Non-handed
- Easy to install
- Weather proof gasket
- Stainless steel set screw on interior lever to secure handle
- Easily converts to inactive handle, using dummy conversion kit K-0971-00-0-*
- For 1 3/4" thick doors
- For 2 1/4" thick doors, use actuator conversion kit K-C2054-57-0-0
- Use with SECURY Automatic gears: 6-35185-01-R-8B and 6-35185-02-R-8B
- Compatible with TEDEE smart locks
- The customer cannot prepare the plates to install the TEDEE adapters
- Jig template available for handle hole cutout. See tools catalogue for details

03
3

BERLIN

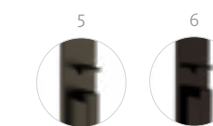
Zamac Gripset Handle



BERLIN Series

Description	PU	Part Number
Gripset active for 45mm (1 3/4") thick door (cylinder included)	1	K-C2080-00-0-*
Gripset Dummy	1	K-C2081-00-0-*
Grip set for TEDEE smart lock	1	K-C2080-T1-0-*
* = Color		PU = Packaging Unit

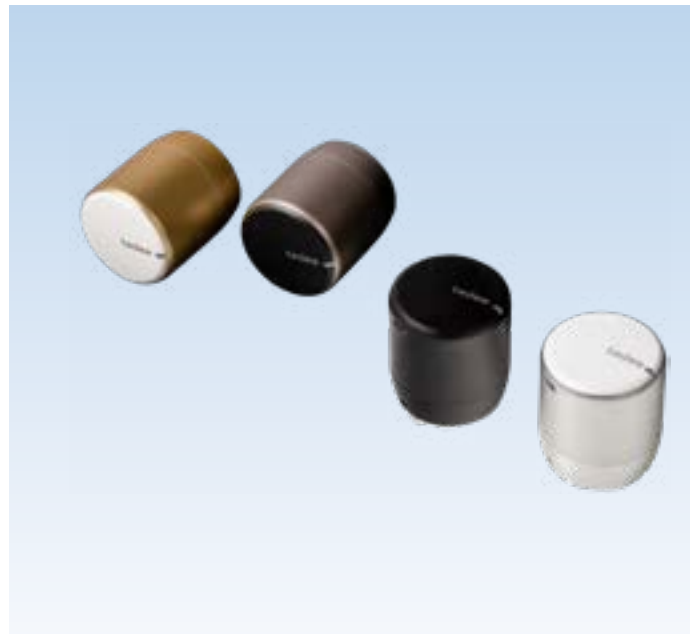
5 = Dark Bronze, 6 = Black



Additional information

- Zamac
- US-cylinder with standard Schlage "C" keyway
- New snapping mechanism for the 90 deg locking with thumb-turn
- Improved springload mechanism for interior lever handle
- Non-handed
- Easy to install
- Weather proof gasket
- Stainless steel set screw on interior lever to secure handle
- Easily converts to inactive handle, using dummy conversion kit K-C0971-00-0-*
- For 1 3/4" thick doors
- For 2 1/4" thick doors, use actuator conversion kit K-C2054-57-0-0
- Use with SECURY Automatic gears: 6-35185-01-R-8B and 6-35185-02-R-8B
- Compatible with TEDEE smart locks
- The customer cannot prepare the plates to install the TEDEE adapters
- Jig template available for handle hole cutout. See tools catalogue for details

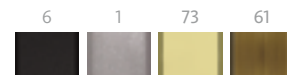
03
3



TEDEE Smart Lock

Description	PU	Part Number
TEDEE PRO Smart Lock	1	6-C9370-00-0-*
* = Color PU = Packaging Unit		

1 = Silver, 6 = Black, 73 = White Gold, 61 = Black Grey



Additional information

- Rechargeable 3000 mAh LiPo battery (included)
- Bluetooth BLE 5.0 2,4 GHz (TEDEE app) and Internet connection
- Security TLS 1.3
- Compatible with all Ferco handles (Lever & Gripset)

03
3



TEDEE Smart lock remote access (Wi-Fi)

Description	PU	Part Number
TEDEE Smart Bridge	1	6-C9382-00-0-7
PU = Packaging Unit		

Additional information

- Dimensions 63.5 x 63.5 x 28 mm / Weight 51.6g
- Power connection socket plug (included) or micro-USB (cable not included)
- Wi-Fi 2.4 GHz and 5,0 GHz
- Bluetooth 5,0 2.4 GHz
- Security TLS 1.3
- Compatible with TEDEE smart lock 6-C9370-00-0-X and Bluetooth Keypad 6-C9387-00-0-6
- Works with smart home systems
- Up to 5 Smart Locks can be controlled (Bluetooth Range)



Bluetooth keypad 2.0

Description	PU	Part Number
TEDEE Keypad 2.0	1	6-C9387-01-0-*
* = Color PU = Packaging Unit		

6 = Black, 7 = White



Additional information

- 3 X AAA batteries (included)
- Bluetooth 5.0 2,4 GHz
- Security TLS 1.3
- Up to 100 unique PINS
- Backlight buttons, Sound signal, Bell button and more
- IP65 protection class
- Compatible with TEDEE smart lock 6-9370-00-0-X and bridge 6-C9382-00-0-7
- Finger print activated



TEDEE Door sensor

Description	UE	Part Number
TEDEE Door Sensor	1	6-C9390-00-0-*
* = Color PU = Packaging Unit		

6 = Black, 7 = White



Additional information

- Sensor Dimensions 30 x 64 x 14 mm
- Magnet Dimensions 17 x 64 x 7 mm
- Power Supply CR2032 battery
- 2.4 GHz to 2.483 GHz (Max output power: 8 dBm)
- 5°C to 50°C (indoor only)



Micro USB Cable

Description	UE	Part Number
Micro USB Cable for TEDEE Lock	1	6-C9377-00-0-0
PU = Packaging Unit		

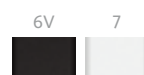
03
3



Spare cap for TEDEE lock

Description	PU	Part Number
Blank front button cover for Tedee PRO	1	6-C9353-00-0-*
		* = Color
		PU = Packaging Unit

6V = Matte Black, 7 = White



Additional information

- Compatible with TEDEE PRO



Bag of Strike Plates

Description	PU	Part Number
Bag of strike plates for 45mm (1 3/4") thick doors	50	K-C4774-45-0-*
Bag of strike plates for 57mm (2 1/4") thick doors	50	K-C4775-57-0-*
		* = Color
		PU = Packaging Unit

03 = Polished Brass, 04 = Antique Brass, 5 = Dark Bronze, 6 = Black, 11 = Satin Nickel, 28 = Pewter



Additional information

- Solid brass (03, 04, 28) or stainless steel (5, 6, 11)
- Bag contains:
 - 1 middle striker with extended lip and clear protective film
 - 2 top and bottom strikers with extended lip and clear protective film
 - 6 screws
- Non-handed
- Available in handle matching finishes
- For use with GU-SECURY Automatic door locks



Knob for Profile cylinders for smart locks Tedee		
Description	UE	Part Number
Knob for TEDEE Cylinder	1	6-U7359-00-0-*
		PU = Packaging Unit

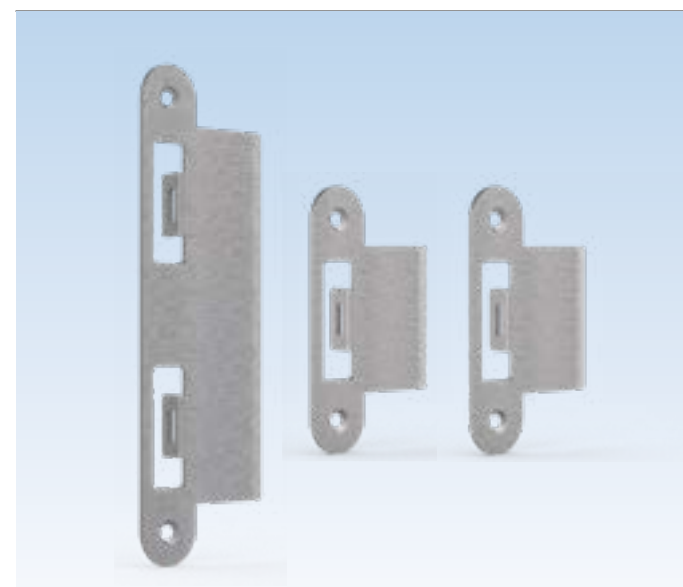
11 = Satin Nickel, 6V = Matte Black



Additional information

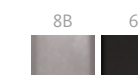
- Used during door installation or servicing to prevent damage
- Replaces the Tedee if necessary
- Compatible with Tedee smart cylinders

03
3



Bag of Strike Plates		
Description	PU	Part Number
Bag of strike plates for 76mm (3") thick doors	1	K-C4777-59-0-*
		* = Color
		PU = Packaging Unit

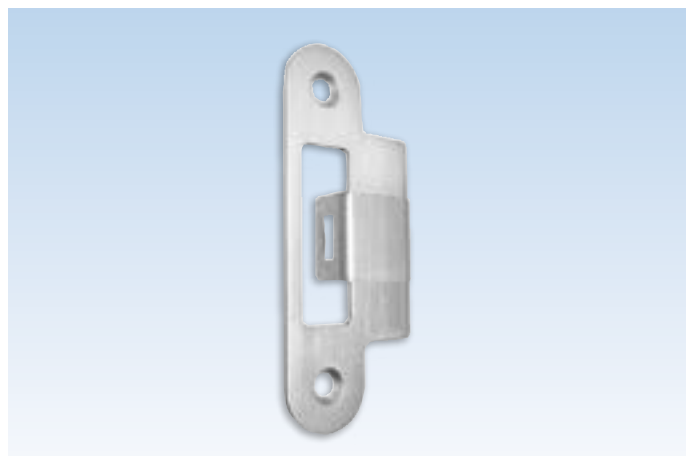
8B = Stainless Steel, 6 = Black



Additional information

- Made in stainless steel
- Bag contains:
 - 1 middle striker with extended lip
 - 2 top and bottom strikers with extended lip
- Non-handed
- For use with GU-SECURY Automatic door locks
- Six #8 x 5/8 FH/PH screws included

03
3



Top and Bottom Striker with Extended Lip

Description	PU	Part Number
Latchbolt strike plate for 45mm (1 3/4") thick doors	10	9-C4776-45-0-*
Latchbolt strike plate for 57mm (2 1/4") thick doors	10	9-C4776-57-0-*
* = Color PU = Packaging Unit		
03 = Polished Brass, 04 = Antique Brass, 5 = Dark Bronze, 6 = Black, 11 = Satin Nickel, 28 = Pewter		



Additional information

- Solid brass (03, 04, 28) or stainless steel (5, 6, 11)
- Non-handed
- With clear protective film
- Available in handle matching finishes
- Two #8 x 5/8 FH/PH screws included
- For use with GU-SECURY Automatic door lock

03
3



Middle Striker with Extended Lip

Description	PU	Part Number
Latch and deadbolt strike plate for 45mm (1 3/4") thick doors	10	9-C4777-45-0-*
Latch and deadbolt strike plate for 57mm (2 1/4") thick doors	10	9-C4777-57-0-*
* = Color PU = Packaging Unit		
03 = Polished Brass, 04 = Antique Brass, 5 = Dark Bronze, 6 = Black, 11 = Satin Nickel, 28 = Pewter		



Additional information

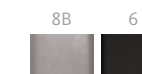
- Solid brass (03, 04, 28) or stainless steel (5, 6, 11)
- Non-handed
- With clear protective film
- Available in handle matching finishes
- Two #8 x 5/8 FH/PH screws included
- For use with GU-SECURY SH2, S-Bolt, Automatic and mortise door locks



Top and Bottom Striker with Extended Lip

Description	PU	Part Number
Latchbolt strike plate for 76mm (3") thick doors	10	9-C4716-59-0-*
* = Color PU = Packaging Unit		

8B = Stainless Steel, 6 = Black



Additional information

- Made in stainless steel
- Non-handed
- Two #8 x 5/8 FH/PH screws not included
- For use with GU-SECURY Automatic door lock



Middle Striker with Extended Lip

Description	PU	Part Number
Latch and deadbolt strike plate for 76mm (3") thick doors	10	9-C4717-59-0-*
* = Color PU = Packaging Unit		

8B = Stainless Steel, 6 = Black



Additional information

- Made in stainless steel
- Non-handed
- Two #8 x 5/8 FH/PH screws not included
- For use with GU-SECURY Automatic door lock

03
3



Torx 15 T-Key

Description	Color	PU	Part Number
Torx key	Steel	1	H-00346-15-0-0
PU = Packaging Unit			

Additional information

- Used for connecting SH2 and Automatic extensions



4mm Allen T-Key

Description	Color	PU	Part Number
Allen key	Steel	1	H-00345-04-0-0
PU = Packaging Unit			

Additional information

- Used for reversing Automatic latchbolts on GU-SECURY Automatic lock and extension



Fastening Screws

Description	Color	PU	Part Number
D1 screws	Stainless Steel	1000	9-C5362-32-0-8
PU = Packaging Unit			

Additional information

- Stainless steel lock fastening screws
- Type D1 with self-drilling spiral point and high duplex thread with "Quadrex" socket
- Sharp tip for quick drive



PEEK Cream Cleaner

Description	PU	Part Number
100mL tube	1	
PU = Packaging Unit		

Additional information

- Cleans, polishes and protects the surface
- Successfully used to clean SS surfaces on handles and pullbars
- Leaves behind a light and invisible protective coating
- Available at Amazon, Candian Tire or other hardware store



Dummy Conversion Kit for BERKELEY

Description	PU	Part Number
Cover ring and screws for BERKELEY handles	1	K-C2056-00-0-*
* = Color		PU = Packaging Unit

01 = Satin Nickel, 25 = Dark Bronze, 28 = Pewter, 6 = Black PC



Additional information

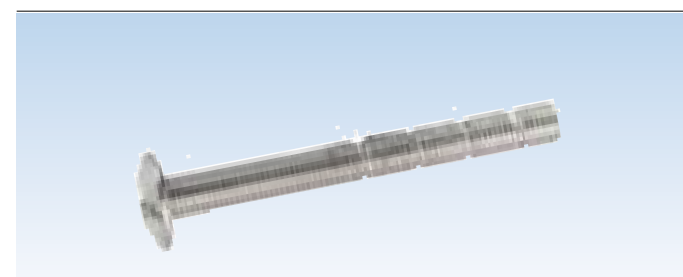
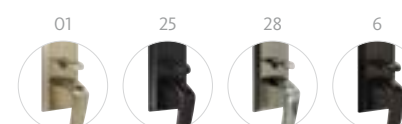
- Used to convert the active to dummy
- 3 screws included to lock the mechanism
- For double doors:
 - active door with keyway
 - inactive door with blank cover



Bottom Ring Cap

Description	PU	Part Number
Cap for BERKELEY handle	1	K-C2052-00-0-*
* = Color		PU = Packaging Unit

01 = Satin Nickel, 25 = Dark Bronze, 28 = Pewter, 6 = Black PC

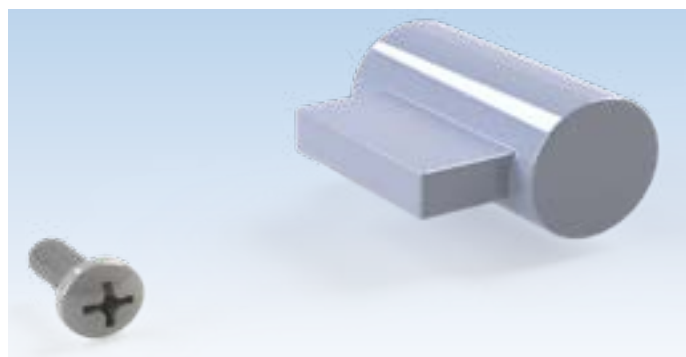


Re-cuttable M5 Screw

Description	PU	Part Number
M5 x 90mm screws for 41-76 mm thick doors (2 screws are supplied with door handle kit)	1	9-U2510-90-R-*
M5 x 110mm screws (doors 36-101.6 mm)	1	9-U2510-10-R-*
* = Color		PU = Packaging Unit

01 = Satin Nickel, 25 = Dark Bronze, 28 = Pewter, 6 = Black PC

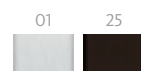




Dummy conversion kit for BERLIN

Description	PU	Part Number
Dummy conversion kit	1	K-C0971-00-0-*
* = Color		PU = Packaging Unit

01 = Satin Chrome, 25 = Dark Bronze



Additional information

- Made of Brass
- Bag of one dummy cylinder and one M4 x 10mm PH screw
- Used to convert the Berlin gripset handles active to dummy
- Part not required for active handles



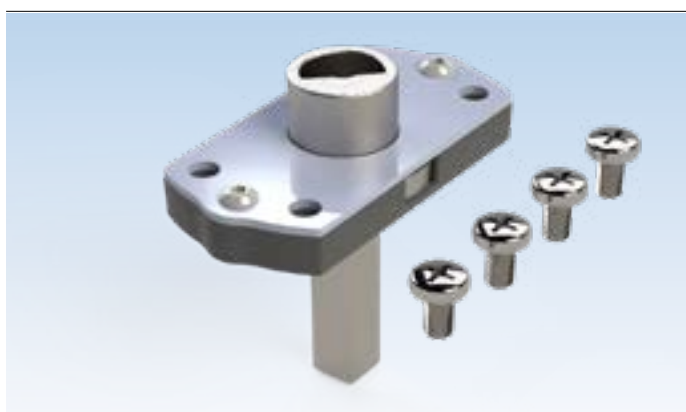
Replacement Snap & Turn box

Description	PU	Part Number
Snap & Turn Box	1	K-C2057-00-0-0
PU = Packaging Unit		

Additional information

- Bag of one box and four M4 x 8mm FH/PH screws
- Included with Berlin gripset handles

03
3



Replacement Springload box

Description	PU	Part Number
Springload Box	1	K-C2058-00-0-0
PU = Packaging Unit		

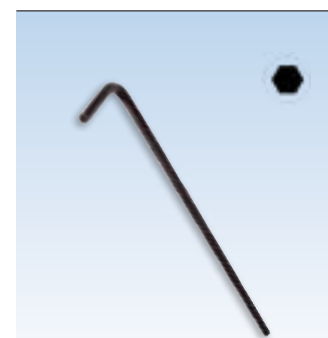
Additional information

- Bag of one box and four M4 x 8mm PH screws
- Included with Berlin gripset handles



Set Screw

Description	Color	PU	Part Number
M5 set screw (1 screw is included with interior handle)	Stainless Steel	1	9-C0527-02-0-8B
* = Color		PU = Packaging Unit	



Allen Key 2,5mm x 100mm

Description	Color	PU	Part Number
Allen key (1 Allen key is supplied with door handle kit)	Black	1	9-U0003-00-0-00
* = Color		PU = Packaging Unit	



Allen T-Key 2,5mm x 152mm

Description	Color	PU	Part Number
Allen key	Steel	1	6-C0560-20-0-0
* = Color		PU = Packaging Unit	

Additional information

- Ideal for properly tightening the set screw of Ferco handle-set

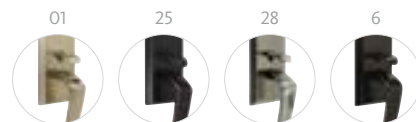
03
3



Universal Actuators

Description	Color	PU	Part Number
Kit for 1 3/4" doors <i>(Supplied with gripset handle)</i>	Steel	1	K-C2054-45-0-0
Kit for 2 1/4" doors	Steel	1	K-C2054-57-0-*
Kit for 2 3/4" doors	Steel	1	K-C2054-70-0-*
Kit for 3" doors	Steel	1	K-C2054-76-0-*
* = Color		PU = Packaging Unit	

01 = Satin Nickel, 25 = Dark Bronze, 28 = Pewter, 6 = Black PC



Additional information

- Non-handed
- Accessories included
- Cylinder with longer tail included in kit for 2 3/4" and 3" doors
- For dummy handles, use actuator included, for any door thickness

03
3



Berkeley Correction Kit

Description	Color	PU	Part Number
Berkeley Correction Kit	Steel	1	K-C0010-01-0-0
		PU = Packaging Unit	

03
3



Cylinders Schlage "C" Keyway			
Description	Color	PU	Part Number
① Cylinder with 52mm tail and set of three keys	Zinc	1	6-C0971-52-0-1
	Brass	1	6-C0971-52-0-3
	Dark Bronze	1	6-C0971-52-0-25
② Cylinder with 64mm tail and set of three keys	Zinc	1	6-C0971-64-0-1
	Dark Bronze	1	6-C0971-64-0-25
③ Cylinder with 90 mm tail and set of three keys	Zinc	1	6-C0971-90-0-1
	Brass	1	6-C0971-90-0-3
	Dark Bronze	1	6-C0971-90-0-25
* = Color		PU = Packaging Unit	

Key Alike Cylinders Schlage "C" Keyway

Description	Color	PU	Part Number
① Cylinder with 52mm tail and set of three keys	Zinc	1	6-C0971-52-9-1
	Brass	1	6-C0971-52-9-3
	Dark Bronze	1	6-C0971-52-9-25
② Cylinder with 64mm tail and set of three keys	Zinc	1	6-C0971-64-9-1
	Dark Bronze	1	6-C0971-64-9-25
③ Cylinder with 90mm tail and set of three keys	Zinc	1	6-C0971-90-9-1
	Brass	1	6-C0971-90-9-3
	Dark Bronze	1	6-C0971-90-9-25
* = Color		PU = Packaging Unit	

- ① For 41-57 mm thick doors with plate 30,45,55mm
- ② For 41-57 mm thick doors with Berlin gripset
- ③ For 41-76 mm thick doors

Master Key : 9-C9990-CM-0-0
Key blank for Berkeley : 9-C0974-00-0-0
Key blank for Berlin : 9-C0974-02-0-0



Dust Cup with Edge- 25mm

Description	Color	PU	Part Number
Plastic cup	Black	10	9-C4765-00-0-6
		100	9-C4765-1C-0-6
		500	9-C4765-5C-0-6
* = Color		PU = Packaging Unit	

Additional information

- Use for latch and 2 automatic latches (optional)
- Dimensions:
 - Length: 62mm
 - Width: 19.5mm
 - Depth: 25.8mm



Construction Handle Set

Description	Color	PU	Part Number
Construction handle	Black	25	K-C9250-25-0-6
* = Color		PU = Packaging Unit	

Additional information

- Reinforced nylon temporary door trim sets
- 8 x 8 x 90mm square spindle included
- 4.2 x 50mm screws included
- For 1 3/4" thick doors
- Locking/Unlocking from inside only



Dust Cup without Edge- 15mm

Description	Color	PU	Part Number
Plastic cup	Black	10	9-C4765-0A-0-6
		100	9-C4765-1C-A-6
		500	9-C4765-5C-A-6
* = Color		PU = Packaging Unit	

Additional information

- Dimensions:
 - Length: 62mm
 - Width: 19.5mm
 - Depth: 16mm

03
3



Construction Key

Description	Color	PU	Part Number
Construction key	Black	10	9-U0001-01-0-0
* = Color		PU = Packaging Unit	

Additional information

The construction key is available for those who prefer to install the decorative hardware trim and lever sets on doors after the construction has been completed. Installing the escutcheon plates and levers in the final stage of construction prevents the decorative trim from becoming scratched or damaged.

The construction key has been designed to accommodate multipoint door hardware (8mm square), tilt-turn hardware (7mm square) and lift-slide hardware (10mm square).

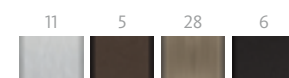
03
3



Screws for Strike Plates

Description	PU	Part Number
#8 x 5/8" (16mm) screws	10	K-C4763-16-6-*
* = Color		PU = Packaging Unit

11 = Satin Nickel, 5 = Dark Bronze, 28 = Pewter, 6 = Black



Additional information

- Bag of 6 screws for strike plates
- #8 x 5/8" FH/PH screws

Handle Display

for Gripset Handle and Door Lock



Handle Display

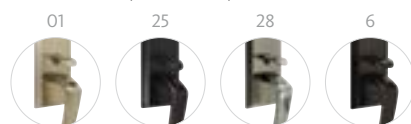
for Gripset Handle and Door Lock



Handle Display with Door Lock and BERKELEY Gripset Handle

Description	PU	Part Number
Handle display – 45mm (1 3/4") thick	1	K-C9617-00-0-9*
Handle display – TEDEE Smart Lock	1	K-C9617-SL-T-9*
* = Color		PU = Packaging Unit

01 = Satin Nickel, 25 = Dark Bronze, 28 = Pewter, 6 = Black



Additional information

- HandleDisplay complete with gripset handle and SECURY Automatic sample gear
- Berkeley handle with TEDEE smart lock with K-C9617-SL-T-9
- When ordering, please add a note for finish

03
3



Handle Display for Gripset

Description	PU	Part Number
BERLIN	1	K-C9608-A1-0-7*
Display Base	1	6-C9602-00-0-6
* = Color		PU = Packaging Unit

01 = Satin Nickel, 25 = Dark Bronze, 28 = Pewter, 6 = Black

* Models in this table are also available in French

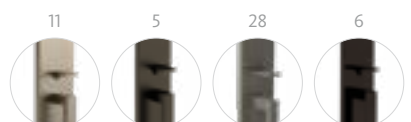
- Display delivered with wall mounted kit
- The display base is an option to place the unit on a desk, to be ordered separately
- 21 1/2 x 32 x 12 (53.2 cm x 80.25 cm x 30.5 cm)

03
3

Handle Display with Door Lock and Berlin Gripset Handle

Description	PU	Part Number
Handle display – 45mm (1 3/4") thick	1	K-C9641-00-0-9
Handle display – TEDEE Smart Lock	1	K-C9641-SL-T-9
* = Color		PU = Packaging Unit

11 = Satin Nickel, 5 = Dark Bronze, 28 = Pewter, 6 = Black



Additional information

- Handle complete with gripset handle and SECURY Automatic sample gear
- Berlin handle with TEDEE smart lock with K-C9641-SL-T-9
- When ordering, please add a note for finish





WINDOW TECHNOLOGY
DOOR TECHNOLOGY
AUTOMATIC ENTRANCE SYSTEMS
BUILDING MANAGEMENT SYSTEMS

HEAD OFFICE

Ferco Architectural Hardware Inc.
2000, Berlier St.
Laval, QC H7L 4S4
Tel.: 450 973-1437
1 800 355-8810
Fax: 450 973-7661
ferco@ferco.ca

ONTARIO / WESTERN PROVINCES

Tel.: 905 282-9588
1 800 668-5310
Fax: 905 282-9915

UNITED STATES

Tel.: 1 800 927-1097
Fax: 1 888 454-0161

www.ferco.ca

Securing technology for you

