



WINDOW TECHNOLOGY
DOOR TECHNOLOGY
AUTOMATIC ENTRANCE SYSTEMS
BUILDING MANAGEMENT SYSTEMS



WINDOW TECHNOLOGY – ORDER CATALOG | SECTION 01.1



Single & Double Hung Window Hardware



Securing technology for you





01

Single & Double Hung Window Hardware

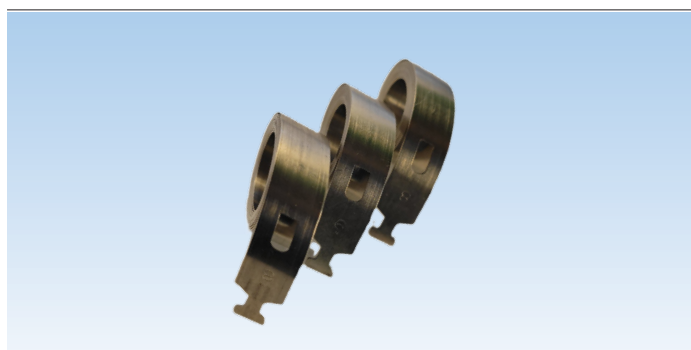
Constant force balance for Hybrid system 01.3
Constant force balances..... 01.5
Pre-assembled coil balances..... 01.6
Brake shoes 01.7
Pivot bars 01.9
Sash locks and keepers 01.10

Constant force balances for Hybrid Systems



Additional information

- Hybrid assembled balance for reversed or regular system
- Coils weight printed on cassette
- Stainless Steel 304
- Weight range 3.5 to 9.5 lbs
- 35" vertical travel
- Max sash weight 76lbs (4 springs), combined with Zamac adapter 9-C1611-1M-0-0
- Reduction of inventory management unit (SKU)



Stackable coils for Hybrid System

Description	Weight (lbs)	PU	Part Number
Cassette & Coil	3.5	300	6-C1643-30-K-0
	4.5	300	6-C1644-30-K-0
	5.5	300	6-C1645-30-K-0
	6.5	300	6-C1646-30-K-0
	7.5	300	6-C1647-30-K-0
	8.5	300	6-C1648-30-K-0
	9.5	300	6-C1649-30-K-0
PU = Packaging Unit			

Unassembled coils for Hybrid System

Description	Weight (lbs)	PU	Part Number
Coils only	3.5	300	6-C1643-30-0-0
	4.5	300	6-C1644-30-0-0
	5.5	300	6-C1645-30-0-0
	6.5	300	6-C1646-30-0-0
	7.5	300	6-C1647-30-0-0
	8.5	300	6-C1648-30-0-0
	9.5	300	6-C1649-30-0-0
PU = Packaging Unit			

Additional information

- For use with cassette 9-C1525-0F & 9-C1525-0M
- Stainless Steel 304
- Weight range – 3.5 lbs to 9.5 lbs

Single cassette

Description	Weight (lbs)	PU	Part Number
Female cassette	White	1000	9-C1525-0F-0-0
Male cassette	White	1000	9-C1525-0M-0-0
PU = Packaging Unit			

Additional information

- Made of white acetal
- Possibility of combining up to 4 cassettes/coils
- With the positioning tabs, the cassette is automatically centered
- More space is allowed between the cassette and the jamb for spring movement
- For use with stackable coil springs 6-C164x

Constant force balances for Hybrid Systems

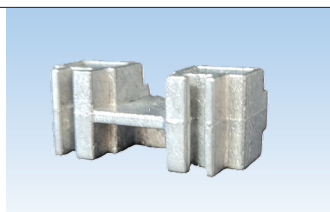
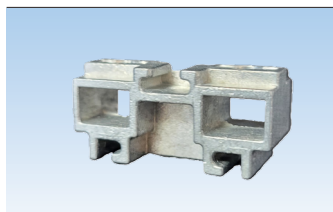


Extension for Reversed System

Description	Color	PU	Part Number
Extension	White	1000	9-C1527-03-0-1
PU = Packaging Unit			

Additional information

- Extension made of fiberglass reinforced nylon
- To facilitate the sash assembly
- Could be used with adapter 9-C1611-1M-0-0
- To be used with brake shoe 6-C1517/6-C1518



Adapter for Reversed System

Description	Color	PU	Part Number
Zinc Adapter	Zinc	1000	9-C1611-1M-0-0
PU = Packaging Unit			

Additional information

- Could be used with extension 9-C1527-02-0-1
- To be used with brake shoe 6-C1517/6-C1518

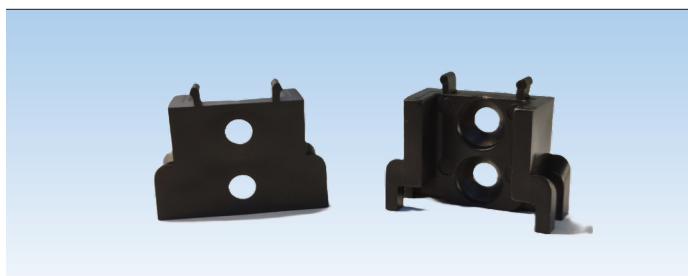


Adapter for Reversed System with Bumper

Description	Color	PU	Part Number
Adapter with Bumper	Grey	1000	6-C1610-1M-0-0
PU = Packaging Unit			

Additional information

- Allows for cushioning if there is contact between the adapter and the cassettes



Clip for Reversed System

Description	Color	PU	Part Number
Fixing clip Black	Black	1000	9-C1529-00-0-6
Fixing clip Whitehe	White	1000	9-C1529-00-0-7
PU = Packaging Unit			

Additional information

- Clip made of fiberglass reinforced nylon
- Frame side fixing clip

Constant force balances and monobloc cassettes



Coil springs



Drop-in system

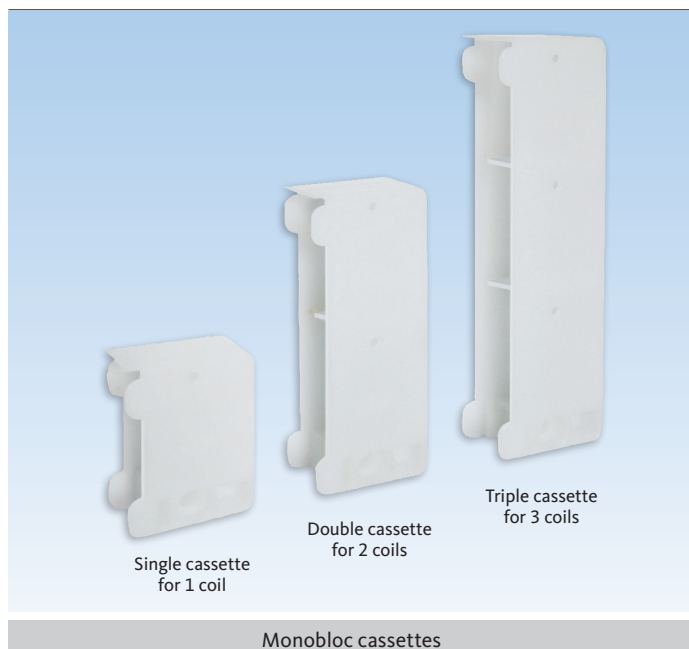
Piggy-back Coil Springs

Description	Weight (lbs)	PU	Part Number
Coil springs	3.5	100 500	9-C1613-1C-0-0 9-C1613-5C-0-0
	4.5	100 500	9-C1614-1C-0-0 9-C1614-5C-0-0
	5.5	100 500	9-C1615-1C-0-0 9-C1615-5C-0-0
	6.5	100 500	9-C1616-1C-0-0 9-C1616-5C-0-0
	7.5	100 500	9-C1617-1C-0-0 9-C1617-5C-0-0
	8.5	100 500	9-C1618-1C-0-0 9-C1618-5C-0-0
	9.5	100 500	9-C1619-1C-0-0 9-C1619-5C-0-0
PU = Packaging Unit			

Additional information

- Stainless steel 304
- Weight range – 3.5 lbs to 9.5 lbs
- 1/2" coil spring for a 1.25" pocket
- Max. sash carrying capacity 57 lbs (3 coils)
- 35" vertical travel
- Stamped with weight for easy identification
- Low cost and a reduction of inventory
- To be used with monobloc cassettes

01

Single cassette
for 1 coilDouble cassette
for 2 coilsTriple cassette
for 3 coils

Monobloc cassettes

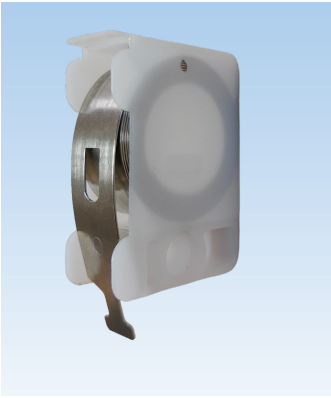
Monobloc cassettes for Piggy-back Coil Springs

Description	Color	PU	Part Number
Single cassette for 1 coil	White	200	9-C1521-2C-0-0
		1000	9-C1521-1M-0-0
Double cassette for 2 coils	White	200	9-C1522-2C-0-0
		1000	9-C1522-1M-0-0
Triple cassette for 3 coils	White	200	9-C1513-2C-0-0
		800	9-C1513-8C-0-0
Quadruple cassette for 4 coils	White	500	9-C1514-5C-0-0
PU = Packaging Unit			

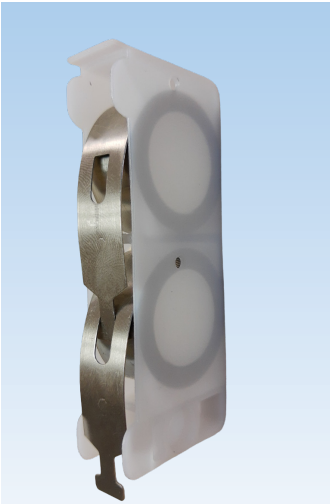
Additional information

- Made of white acetal
- Can be combined with the tandem support for 3 coils
- Self locating coil tabs inside cassette
- Oversize spacers allow for extra coil room
- To be used with piggy-back coils spring

Pre-assembled coil Balances



Simple Springs



Double Spring



Triple Spring

Additional information

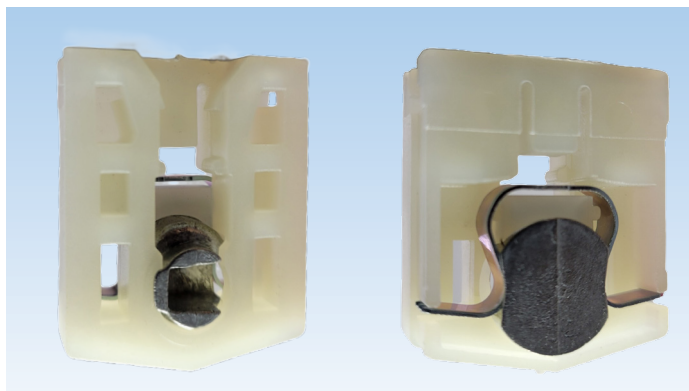
- Stainless steel 304
- Weight range
3.5 lbs to 28.5 lbs
- 1/2" coil spring for a 1.25" pocket
- 35" vertical travel

Pre-assembled piggy-back coil balances

Description	Weight (lbs)	PU	Part Number
Simple Spring	3.5	300	6-C1703-30-0-0
	4.5	300	6-C1704-30-0-0
	5.5	300	6-C1705-30-0-0
	6.5	300	6-C1706-30-0-0
	7.5	300	6-C1707-30-0-0
	8.5	300	6-C1708-30-0-0
	9.5	300	6-C1709-30-0-0
Double Spring	10	250	6-C1710-25-0-0
	11	250	6-C1711-25-0-0
	12	250	6-C1712-25-0-0
	13	250	6-C1713-25-0-0
	14	250	6-C1714-25-0-0
	15	250	6-C1715-25-0-0
	16	250	6-C1716-25-0-0
	17	250	6-C1717-25-0-0
	18	250	6-C1718-25-0-0
	19	250	6-C1719-25-0-0
Triple Spring	20	150	6-C1720-15-0-0
	21	150	6-C1721-15-0-0
	22	150	6-C1722-15-0-0
	23	150	6-C1723-15-0-0
	24	150	6-C1724-15-0-0
	25	150	6-C1725-15-0-0
	26	150	6-C1726-15-0-0
	27	150	6-C1727-15-0-0
	28	150	6-C1728-15-0-0
PU = Packaging Unit			

01

Brake shoes

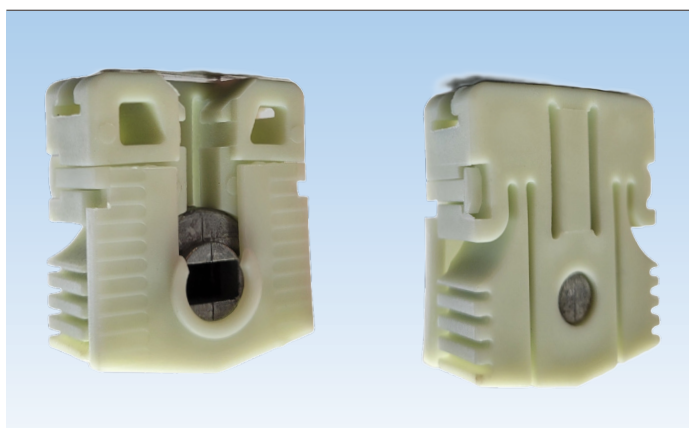


Sides locking brake Shoe

Description	Color	PU	Part Number
Brake shoe	White	200 500	6-C1524-2C-0-0 6-C1524-5C-0-0
PU = Packaging Unit			

Additional information

- Brake shoe made of fiberglass reinforced nylon
- Spring slots closer to center of shoe to reduce twist of shoe in track
- Reinforced spring slot designed to withstand greater pull force
- All edges are rounded to reduce friction
- Side locking shoe with metal brake
- Optional retainer clip 9-C1512-2C-0-0 (recommended)

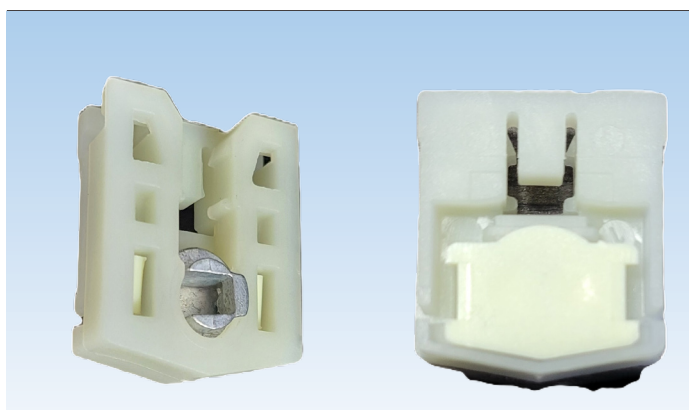


Sides and front locking brake shoe

Description	Color	PU	Part Number
Brake shoe	White	200 500	6-C1523-2C-0-0 6-C1523-5C-0-0
PU = Packaging Unit			

Additional information

- Brake shoe made of fiberglass reinforced nylon
- Spring slots closer to center of shoe to reduce twist of shoe in track
- Reinforced spring slot designed to withstand greater pull force
- All edges are rounded to reduce friction
- Can be used for horizontal sliders
- Brake will engage with as little as 15° of sash turn
- Optional retainer clip 9-C1512-2C-0-0 (for horizontal sliders mandatory)



Back locking brake shoe

Description	Color	PU	Part Number
Back brake shoe	White	1000	6-C1515-1M-0-0
PU = Packaging Unit			

Additional information

- Brake shoe made of fiberglass reinforced nylon
- Spring slots closer to center of shoe to reduce twist of shoe in track
- Reinforced spring slot designed to withstand greater pull force
- Optional retainer clip 9-C1512-2C-0-0 (mandatory for horizontal sliders)

Brake shoes

And retainer Clip



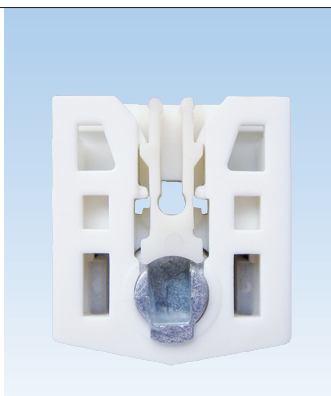
Brake shoe for Reversed system

Description	Color	PU	Part Number
Shoe	White	500	6-C1517-5C-0-0
Shoe (CAM for T pivot)*	White	500	6-C1518-5C-K-0
PU = Packaging Unit			

Additional information

- Brake shoe made of fiberglass reinforced nylon
- Spring slots closer to center of shoe to reduce twist of shoe in track
- Reinforced spring slot designed to withstand greater pull force
- Optional retainer clip 9-C1512-2C-0-0 (mandatory for horizontal sliders)

* Clearance in the CAM for an oversized T-Pivot Bar



Mounted on brake shoe

Pivot bar retainer clip

Description	Color	PU	Part Number
Retainer clip	White	200 1000	9-C1512-2C-0-0 9-C1512-1M-0-0
PU = Packaging Unit			

Additional information

- Made of fiberglass reinforced nylon
- Compatible with all FERCO brake shoes



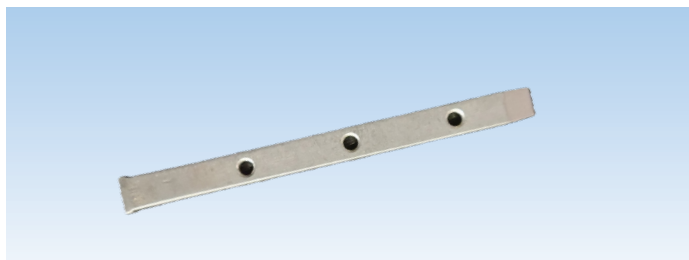
Dust cover

Description	Color	PU	Part Number
Dust cover	White	1000	9-C1508-1M-0-0
PU = Packaging Unit			

Additional information

- Polyethylene foam
- Use to remove debris buildup that may settle on the extended coil
- Dimensions:
Width: 32,0 mm
Depth: 16,0 mm
Height: 12.7 mm

Pivot bars



T-shaped pivot bar Stainless Steel

Description	Color	PU	Part Number
Pivot bar in T 100mm	SS	500	9-C1515-5C-0-8
PU = Packaging Unit			

Additional information

- Made of stainless steel
- Use with brake shoe
- Use #6 x 12 pan screws (9-C9661-1M-0-1)

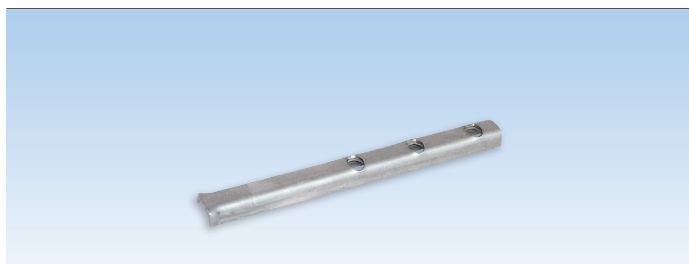


T-shaped pivot bar

Description	Color	PU	Part Number
Pivot bar 76mm	Zamac	200 1000	9-C1506-2C-0-0 9-C1506-1M-0-0
PU = Packaging Unit			

Additional information

- Made of Zamac
- Use with brake shoe
- Use #6 x 12 pan screws (9-C9661-1M-0-1)

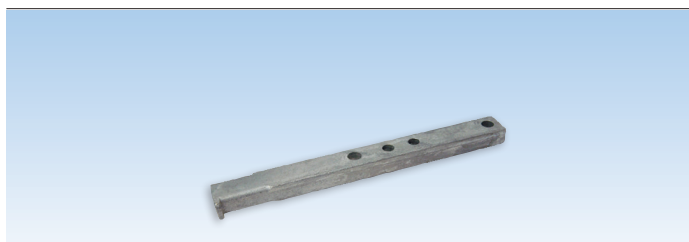


Stainless Steel pivot bar

Description	Color	PU	Part Number
Pivot bar 76mm	SS	200 1000	9-C1504-2C-0-8 9-C1504-1M-0-8
PU = Packaging Unit			

Additional information

- Made of stainless steel
- Use with brake shoe
- Use #6 x 12 pan screws (9-C9661-1M-0-1)



Zamac pivot bar

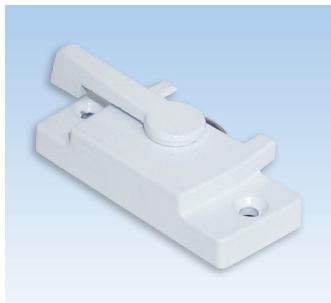
Description	Color	PU	Part Number
Pivot bar 76mm	Zamac	200 1000	9-C1507-2C-0-1 9-C1507-1M-0-1
PU = Packaging Unit			

Additional information

- Made of Zamac
- Use with brake shoe
- Use #6 x 12 pan screws (9-C9661-1M-0-1)

Sash locks

and keepers

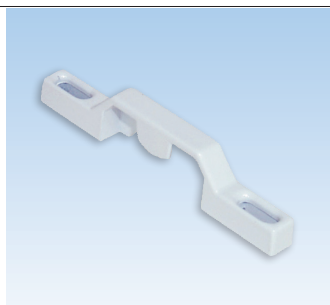
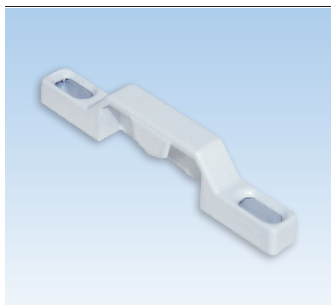


Sash lock with alignment guides

Description	Color	PU	Part Number
Sash lock Dim. B = 11mm	White	200	6-C1181-2C-0-7
Sash lock Dim. B = 18mm	White	200	6-C1183-2C-0-7
PU = Packaging Unit			

Additional information

- Sturdy zinc die cast construction
- Choice of two mounting hole locations:
6-C1181 (Dim. B = 11mm)
6-C1183 (Dim. B = 18mm)
- Alignment guides align lock to keeper perfectly and provide additional security
- Used with keepers:
9-C1181-2C-0-7
9-C1183-2C-0-7

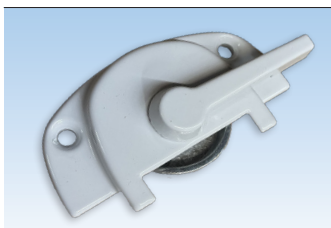


Keepers

Description	Color	PU	Part Number
Keeper 7.4mm width	White	200	9-C1181-2C-0-7
Keeper 6.5mm width	White	200	9-C1183-2C-0-7
PU = Packaging Unit			

Additional information

- Sturdy zinc die cast construction
- Used with locks:
6-C1181-2C-0-7
6-C1183-2C-0-7
- Use #6 screws

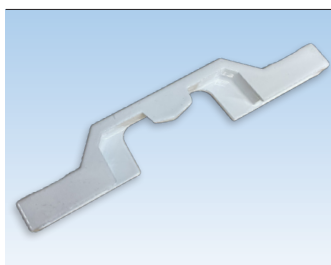


Sash lock

Description	Color	PU	Part Number
Sash lock	White	200	6-C1173-2C-0-27
PU = Packaging Unit			

Additional information

- Sturdy zinc die cast construction
- Used with keeper 9-C1173-2C-0-27



Keepers

Description	Color	PU	Part Number
Keeper 8.3mm width	White	200	9-C1173-2C-0-27
PU = Packaging Unit			

Additional information

- Sturdy zinc die cast construction
- Used with locks 6-C1173-2C-0-27
- Use #6 screws



WINDOW TECHNOLOGY
DOOR TECHNOLOGY
AUTOMATIC ENTRANCE SYSTEMS
BUILDING MANAGEMENT SYSTEMS



HEAD OFFICE

Ferco Architectural Hardware Inc.
2000, Berlier St.
Laval, QC H7L 4S4
Tel.: 450 973-1437
1 800 355-8810
Fax: 450 973-7661
ferco@ferco.ca

ONTARIO / WESTERN PROVINCES

Tel.: 905 282-9588
1 800 668-5310
Fax: 905 282-9915

UNITED STATES

Tel.: 1 800 927-1097
Fax: 1 888 454-0161

www.ferco.ca

Securing technology for you

