



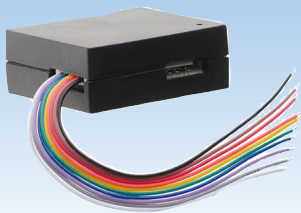
WINDOW TECHNOLOGY  
DOOR TECHNOLOGY  
AUTOMATIC ENTRANCE SYSTEMS  
BUILDING MANAGEMENT SYSTEMS



DOOR TECHNOLOGY – ORDER CATALOG | SECTION 03.5



# GU-SECURY Automatic Smart Access Controlled



Securing technology for you







# 03.5

## SECURY Automatic Access Controlled

SECURY Automatic Key-operated Door Lock.....	03.5.3
Filler pieces.....	03.5.5
Access Control Kits.....	03.5.6
Code Keypad / Fingerprint Scanner .....	03.5.9
A-opener Kit .....	03.5.11
SECUREconnect 200 .....	03.5.12
Faceplate for SECUREconnect.....	03.5.13
Concealed Cable Duct .....	03.5.14
Power Supply.....	03.5.15
Pull Bar Handles .....	03.5.16
Accessories for Pull Bar Handles .....	03.5.19
Smart lock .....	03.5.21
BELCANTO Handle and EU Rosettes .....	03.5.22
EURO Profile Cylinder .....	03.5.24
Strike Plates .....	03.5.25
Accessories .....	03.5.28

# The House Entrance Door Concept

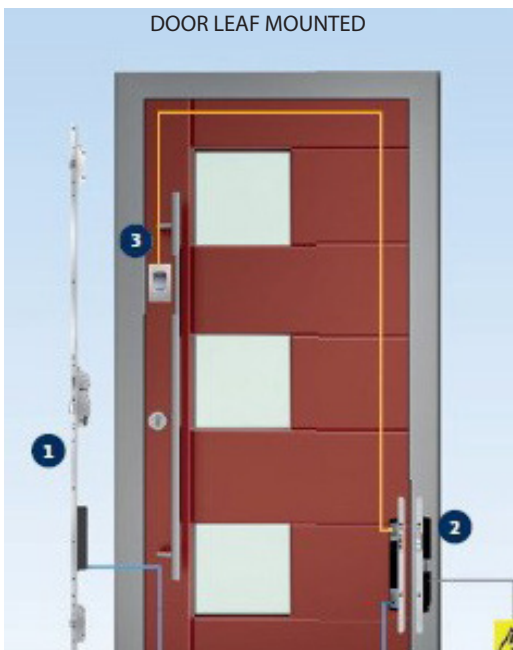
Secure – Convenient – Flexible



## The single-door solution providing easy access

The GU house entrance door concept combines security and comfort

- Convenient access with biometric fingerprint recognition or individual access code. Special emphasis has been placed on simple configuration of the system
- Reading directly via the finger scanner or the code keypad, the non-networked system can function without additional computer assistance



- Control via finger scanner or code keypad
- GU-SECURITY Automatoc with A-opener
- SECUREconnect 200 wireless transition

# SECURY Automatic

with Latch, Deadbolt and 2 Automatic Latchbolts - Rounded Ends



Unlocked



Locked

## SECURY Automatic Door Lock With Key Open and Lock Function of the Multi-point

Description	Backset	Color	PU	Part Number
Door lock for 6' 8" doors	35mm	SS	5	6-40526-01-R-8B
Door lock for 8' doors	35mm	SS	5	6-40526-02-R-8B
Door lock for 6' 8" doors	45mm	SS	5	6-40526-03-R-8B
Door lock for 8' doors	45mm	SS	5	6-40526-04-R-8B
Door lock for 6' 8" doors	55mm	SS	5	6-40526-05-R-8B
Door lock for 8' doors	55mm	SS	5	6-40526-06-R-8B
Door lock for 6' 8" doors	65mm	SS	5	6-40526-07-R-8B
Door lock for 8' doors	65mm	SS	5	6-40526-08-R-8B

PU = Packaging Unit

### Simply Close the Door!

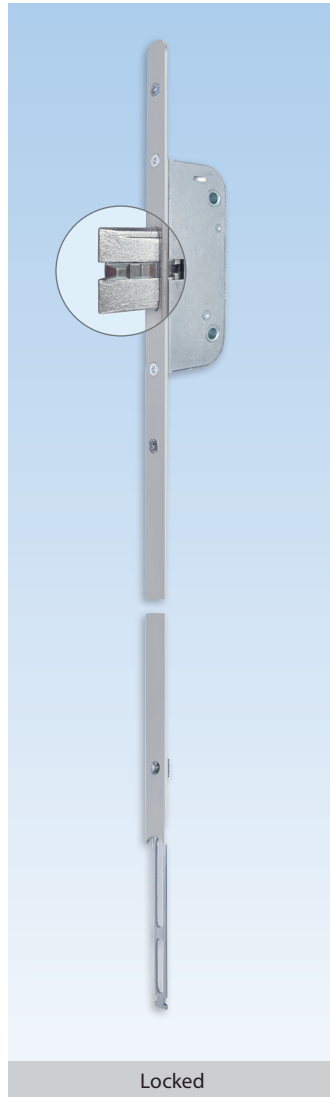
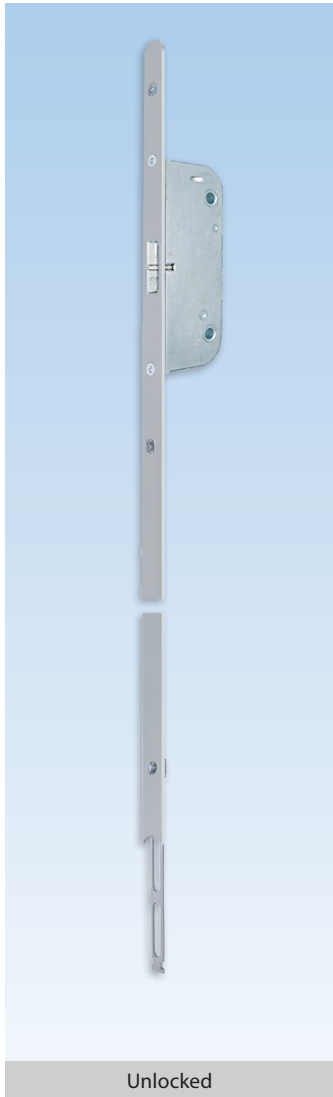
As soon as the door is pulled shut, the Automatic latchbolts instantly throw 20mm and are secured to prevent them from being forced back. By turning the key or the knob, the center deadbolt will engage and lock the top and bottom latchbolts to become a **3-deadbolt locking system**.

### Additional information

- 3-point, one piece locking system for 6' 8" and 8' doors
- Heavy duty mortise construction with reinforced lever return spring system
- Locking by PZ cylinder with 180° turn of key or thumb-turn
- Unlocking with 180° turn to retract the deadbolt and another 180° turn to retract the latches
- No lifting of handle to engage locking points
- Top and bottom Automatic latchbolt projection from 10 to 20mm:
  - Provides security
  - Protects the door
- 3/4" (20mm) throw on deadbolt
- Non handed, latch easily reversible
- 8mm square spindle
- 92mm centres (spindle to cylinder)
- 16mm stainless steel faceplate with radius ends for easy installation and cleaner look
- Same hardware groove detail throughout our entire door lock program (jig, router base and bits available)
- Extension with additional lock point is available for doors taller than 8' (6-33479-04-0-8B)
- 360° turn with profile cylinders

# Automatic Extension

with Additional Latchbolt - Radius End



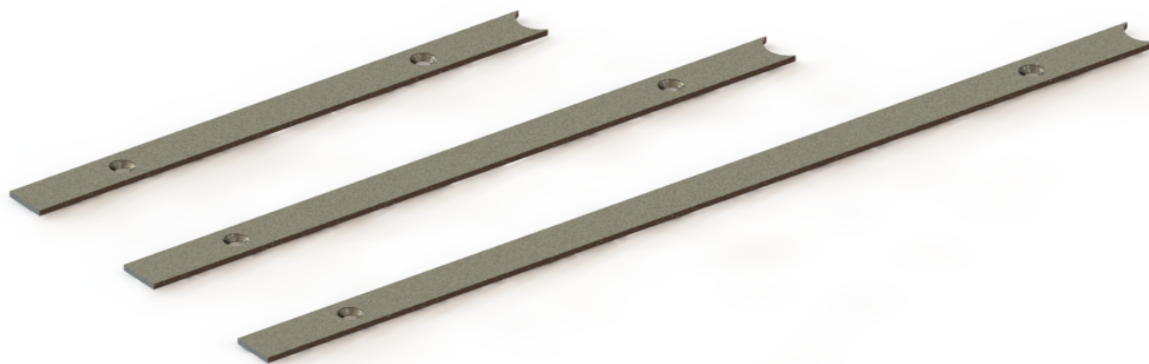
Extension with Additional Latchbolt			
Description	Color	PU	Part Number
525mm extension with rounded end	Stainless Steel	5	6-33479-04-0-8B
800mm extension with rounded end	Stainless Steel	1	6-C5078-00-0-8B
1050mm extension with rounded end	Stainless Steel	1	6-C5062-10-0-8B
1325mm extension with rounded end	Stainless Steel	1	6-C5062-13-0-8B
* = Color		PU = Packaging Unit	

### Additional information

- Tapered latch always engaging in strike plate
- 16mm stainless steel faceplate with radius end for easy installation and cleaner look
- Additional locking point for doors taller than 8'
- To be used with GU-SECURY Automatic door locks

# Filler pieces

Round to square



Filler Pieces Round to square		
Description	PU	Part Number
Filler piece 193,7mm x 16 mm	1	9-C4340-19-0-8B
Filler piece 245,9 mm x 16 mm	1	9-C4342-24-0-8B
Filler piece 342,3 mm x 16 mm	1	9-C4342-34-0-8B

### Additional information

- Made of stainless steel
- To be used with radius end locks and extensions

Formulas to select filler length:

- Bottom:  
L = Handle height - 720,7mm
- Top 1590mm lock:  
L = Door height - handle height - extension(s) length - 871,7mm
- Top 1900mm lock:  
L = Door height - handle height - extension(s) length - 1181,7mm

# Access Control Kits

DOOR LEAF MOUNTED



## DOOR LEAF MOUNTED Code Keypad Kit

Description	Color	PU	Part Number
Code keypad kit		1	K-C1440-51-0-0
* = Color		PU = Packaging Unit	

### Additional information

- Package contains:
  - Code keypad (K-C5560-20-4-8)
  - A-opener (K-C8153-01-0-0)
  - SECURE Connect 200 (K-C5560-20-4-6)
- SECURE Connect faceplates must be bought separately (9-C4793-0X-0-8B)
- Power supply can be bought separately (6-C9405-00-0-00)
- Refer to wire Diagram - Option 3



## DOOR LEAF MOUNTED Fingerprint Scanner Kit

Description	Color	PU	Part Number
Fingerprint scanner kit		1	K-C1440-01-0-0
* = Color		PU = Packaging Unit	

### Additional information

- Package contains:
  - Fingerprint scanner (K-C5560-23-4-8)
  - A-opener (K-C8153-01-0-0)
  - SECURE Connect 200 (K-C5560-20-4-6)
- SECURE Connect faceplates must be bought separately (9-C4793-0X-0-8B)
- Power supply can be bought separately (6-C9405-00-0-00)
- Refer to wire Diagram - Option 3

\* Do not install the SECUREconnect if conditions require a higher protection class than IP 40





### FRAME MOUNTED Code Keypad Kit

Description	Color	PU	Part Number
Code keypad kit		1	K-C1440-51-0-0
Cable relay -6 (One required)		1	B-55600-21-4-6
* = Color		PU = Packaging Unit	

#### Additional information

- Package contains:
  - Code keypad (K-C5560-20-4-8)
  - A-opener (K-C8153-01-0-0)
  - SECURE Connect 200 (K-C5560-20-4-6)
- One cable relay -6 (B-55600-21-4-6) must be bought separately
- SECURE Connect faceplates must be bought separately (9-C4793-0X-0-8B)
- Power supply can be bought separately (6-C9405-00-0-00)
- Refer to wire Diagram - Option 6



### FRAME MOUNTED Fingerprint Scanner Kit

Description	Color	PU	Part Number
Fingerprint Scanner Kit		1	K-C1440-01-0-0
Cable relay -6 (One required)		1	B-55600-21-4-6
* = Color		PU = Packaging Unit	

#### Additional information

- Package contains:
  - Fingerprint scanner (K-C5560-23-4-8)
  - A-opener (K-C8153-01-0-0)
  - SECURE Connect 200 (K-C5560-20-4-6)
- One cable relay -6 (B-55600-21-4-6) must be bought separately
- SECURE Connect faceplates must be bought separately (9-C4793-0X-0-8B)
- Power supply can be bought separately (6-C9405-00-0-00)
- Refer to wire Diagram - Option 6

\* Do not install the SECUREconnect if conditions require a higher protection class than IP 40

# Access Control Kits

WALL MOUNTED



### WALL MOUNTED Code Keypad Kit

Description	Color	PU	Part Number
Code keypad kit		1	K-C1440-73-0-0
* = Color		PU = Packaging Unit	

#### Additional information

- Package contains:
  - Code keypad (K-C5560-20-1-8)
  - A-opener (K-C8153-01-0-0)
  - SECURE Connect 200 (K-C5560-20-4-6)
- Relay unit included (Not show on image)
- SECURE Connect faceplates must be bought separately (9-C4793-0X-0-8B)
- Power supply can be bought separately (6-C9405-00-0-00)
- Refer to wire Diagram - Option 4



### WALL MOUNTED Fingerprint Scanner Kit

Description	Color	PU	Part Number
Fingerprint scanner kit		1	K-C1440-61-0-0
* = Color		PU = Packaging Unit	

#### Additional information

- Package contains:
  - Fingerprint scanner (K-C5560-23-1-8)
  - A-opener (K-C8153-01-0-0)
  - SECURE Connect 200 (K-C5560-20-4-6)
- Relay unit included (Not show on image)
- SECURE Connect faceplates must be bought separately (9-C4793-0X-0-8B)
- Power supply can be bought separately (6-C9405-00-0-00)
- Refer to wire Diagram - Option 4

\* Do not install the SECUREconnect if conditions require a higher protection class than IP 40

# SEPARATE COMPONENTS

## Code Keypad/Fingerprint Scanner



### Door leaf / Frame mounted Code Keypad

Description	Color	PU	Part Number
Code keypad	Stainless steel	1	K-C5560-20-4-8
* = Color		PU = Packaging Unit	

#### Additional information

- High-quality housing
  - cast and waterproof for outdoor use
- Stainless steel keyboard and faceplate
- Intelligent and time-controlled locking keyboard mechanisms to combat manipulation
- Encrypted communication
- Optimum installation height of 1.2 m upwards (for child safety)
- Can only be used in combination with SECURE Connect



### Door leaf / Frame mounted Fingerprint Scanner

Description	Color	PU	Part Number
Fingerprint scanner	Stainless steel	1	K-C5560-23-4-8
* = Color		PU = Packaging Unit	

#### Additional information

- High-quality housing
  - cast and waterproof for outdoor use
- Stainless steel faceplate
- False rejection rate minimized to nearly “zero”
- Highest biometric security standards
  - programming without any code
- Self-learning fingerprint
- Optimum installation height of 1.2 m upwards (for child safety)
- Can only be used in combination with SECURE Connect

# SEPARATE COMPONENTS

## Code Keypad/Fingerprint Scanner



### Wall mounted Code Keypad

Description	Color	PU	Part Number
Code keypad	Stainless steel	1	K-C5560-20-1-8
* = Color		PU = Packaging Unit	

### Additional information

- High-quality housing
  - cast and waterproof for outdoor use
- Stainless steel keyboard and faceplate
- Intelligent and time-controlled locking mechanisms to combat manipulation
- Encrypted communication
- Optimum installation height of 1.2 m upwards (for child safety)
- Can only be used in combination with SECURE Connect
- Relay unit included (Not show on image)



### Wall mounted Fingerprint Scanner

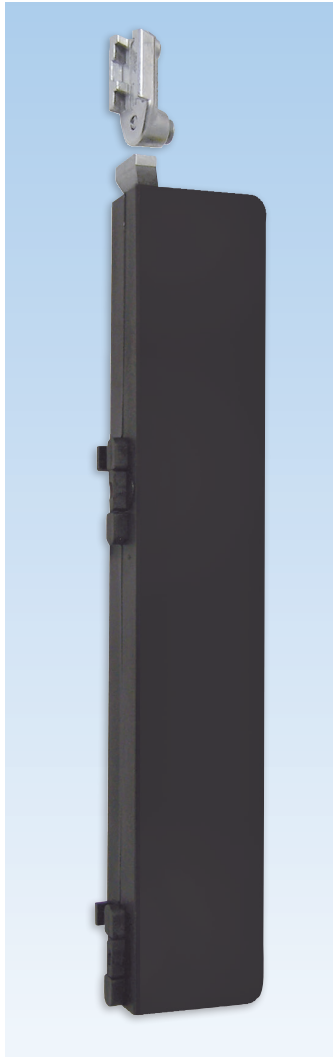
Description	Color	PU	Part Number
Fingerprint scanner	Stainless steel	1	K-C5560-23-1-8
* = Color		PU = Packaging Unit	

### Additional information

- High-quality housing
  - cast and waterproof for outdoor use
- Stainless steel faceplate
- False rejection rate minimized to nearly “zero”
- Highest biometric security standards
  - programming without any code
- Self-learning fingerprint
- Optimum installation height of 1.2 m upwards (for child safety)
- Can only be used in combination with SECURE Connect
- Relay unit included (Not show on image)

# GU-SECURITY A-opener

Opening Motor



Mounted on gear

### A-opener Kit

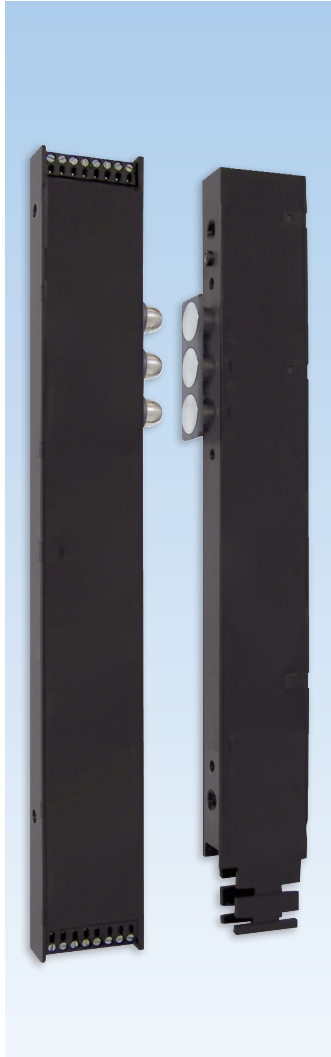
Description	Color	PU	Part Number
A-opener kit with connecting cables	Black	1	K-C8153-01-0-0
* = Color		PU = Packaging Unit	

### Additional information

- The GU-SECURITY Automatic lock with motorized A-opener retracts the latches
- Once the door panel is closed, it can be opened from the outside or inside via an impulse transmitter. That will signal the A-opener to retract the latches
- If the deadbolt is engaged the system is inoperative and requires a key from the exterior or thumbturn to unlock

# SECURE Connect 200

Wireless Power and Data Transmission



## SECUREconnect 200 Unit

Description	Color	PU	Part Number
SECUREconnect 200	Black	1	K-C5560-20-4-6
* = Color		PU = Packaging Unit	

### The intelligent solution for the door system

More security and convenience. SECURE Connect 200 for wireless power and data transmission between frame and door leaf.

#### Additional information

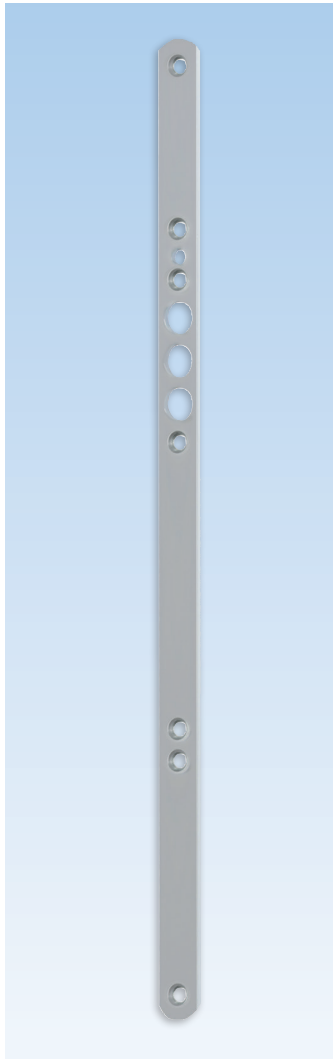
- Easy installation in timber, PVC and metal door systems
- Short-circuit proof power transmission to the door leaf
- Tamper protection via encoded telegram interface
- Faceplates must be bought separately (9-C4793-0X-0-8B)



\* Do not install the SECUREconnect if conditions require a higher protection class than IP 40

# Faceplate

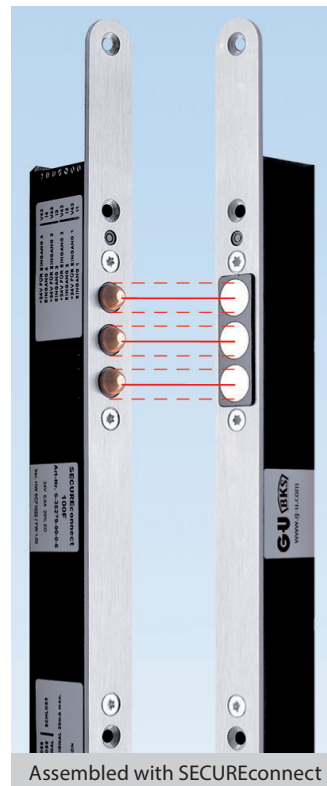
for SECURE Connect Unit



Faceplate			
Description	Color	PU	Part Number
Faceplate 16mm wide with rounded ends (two required)	Stainless Steel	1	9-C4793-01-0-8B
Faceplate 20mm wide with rounded ends (two required)	Stainless Steel	1	9-C4793-03-0-8B
* = Color		PU = Packaging Unit	

### Additional information

- 16 or 20mm stainless steel faceplate with radius ends for easy installation and cleaner look
- Mounting screws included with Secure Connect 200 unit (K-C5560-20-4-6)
- Fastening screws not included (9-C5362-32-0-8)



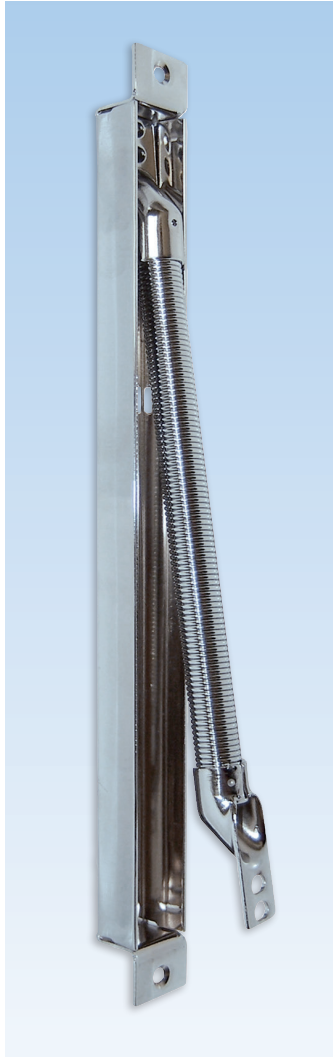
Assembled with SECUREconnect



Mounted on door

# Cable Duct

## Concealed Cable Transition

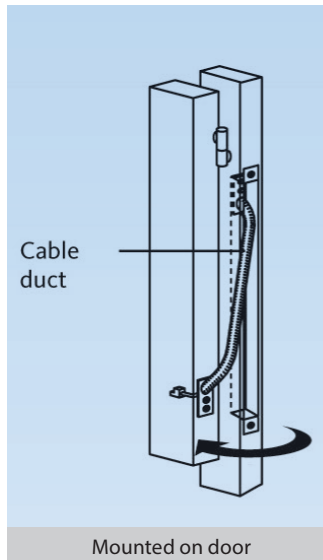


### Concealed Cable Duct

Description	Color	PU	Part Number
Cable duct	Zinc	1	6-29854-00-0-0
* = Color		PU = Packaging Unit	

### Additional information

- Installation screws are included







## Power Supply 24V DC

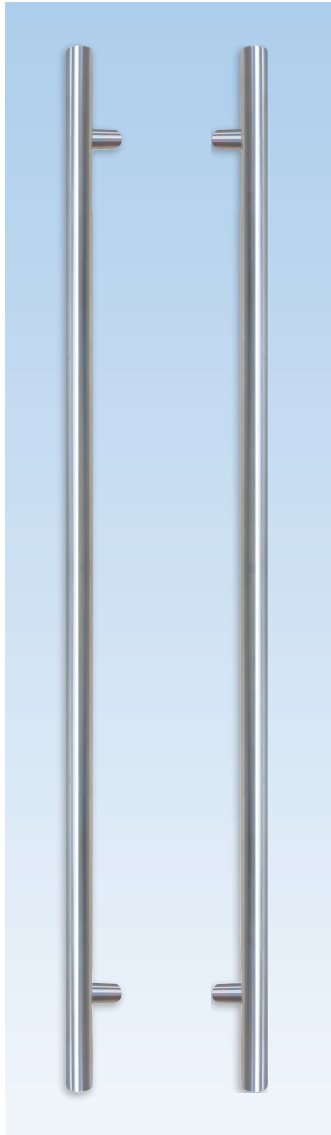
Description	Color	PU	Part Number
	Black	1	6-C9405-00-0-0
* = Color		PU = Packaging Unit	

## Additional information

- Plug-in wall adapter
- Input: 100-240 VAC @ 50/60 Hz
- Output: 24V DC, 2A, 48W
- Screw terminals output

# Push-Pull Handle

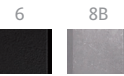
Contemporary Double Round



### Rounded Straight Handle

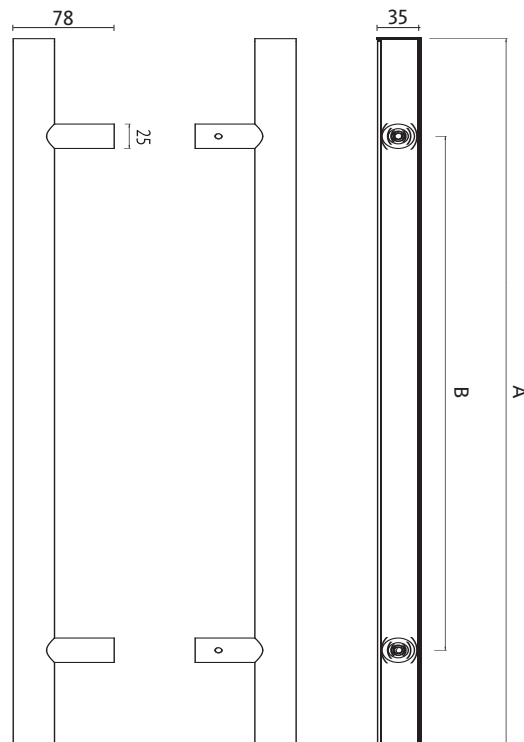
Description	PU	Part Number
Double pull bars Length (A) = 800mm Fixing centers (B) = 600mm	1	K-C0340-08-P-*
Double pull bars Length (A) = 1200mm Fixing centers (B) = 1000mm	1	K-C0340-12-P-*
Double pull bars Length (A) = 1800mm Fixing centers (B) = 1400mm	1	K-C0340-18-P-*
Single pull bars Length (A) = 800mm Fixing centers (B) = 600mm	1	6-C0140-08-0-*
Single pull bars Length (A) = 1200mm Fixing centers (B) = 1000mm	1	6-C0140-12-0-*
Single pull bars Length (A) = 1800mm Fixing centers (B) = 1400mm	1	6-C0140-18-0-*

8B = Stainless Steel, 6 = Black      PU = Packaging Unit



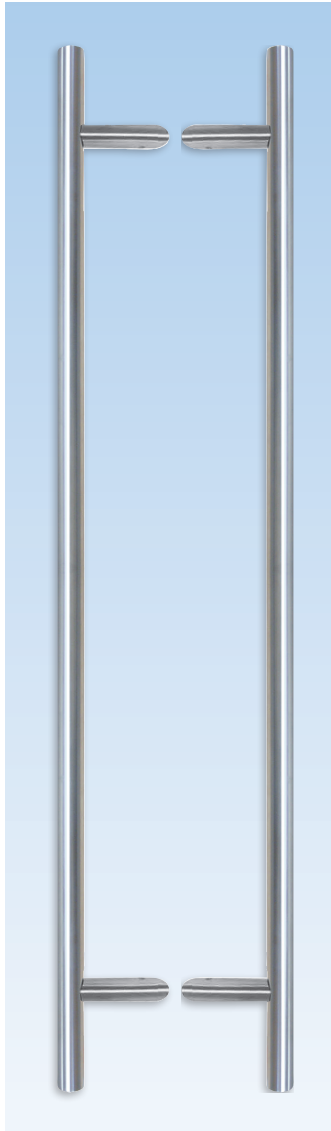
### Additional information

- Made of stainless steel
- Fastening kit included with M8 screws for 1 3/4" and 2 1/4" doors



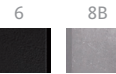
# Push-Pull Angle Handle

Contemporary Double Round



Rounded 45° Offset Handles		
Description	PU	Part Number
Double pull bars Length (A) = 800mm Fixing centers (B) = 600mm	1	K-C0345-08-P-*
Double pull bars Length (A) = 1200mm Fixing centers (B) = 1000mm	1	K-C0345-12-P-*
Double pull bars Length (A) = 1800mm Fixing centers (B) = 1400mm	1	K-C0345-18-P-*
Single pull bars Length (A) = 800mm Fixing centers (B) = 600mm	1	6-C0145-08-0-*
Single pull bars Length (A) = 1200mm Fixing centers (B) = 1000mm	1	6-C0145-12-0-*
Single pull bars Length (A) = 1800mm Fixing centers (B) = 1400mm	1	6-C0145-18-0-*

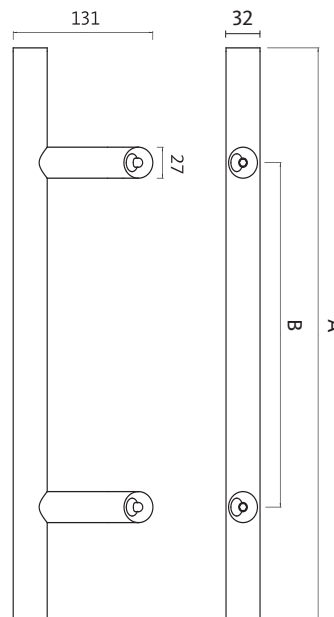
8B = Stainless Steel, 6 = Black      PU = Packaging Unit



03  
5

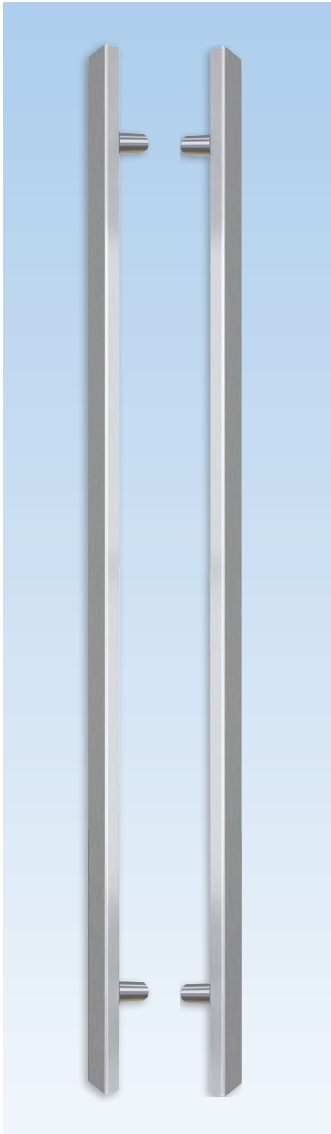
### Additional information

- Made of stainless steel
- Gives more clearance to the door jamb
- Fastening kit included with M8 screws for 1 3/4" and 2 1/4" doors

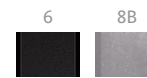


# Push-Pull Handle

## Contemporary Double Rectangular

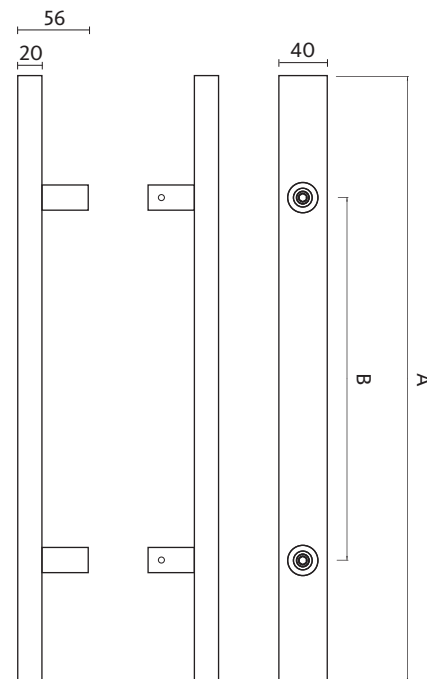


Rectangular Straight Handle		
Description	PU	Part Number
Double pull bars Length (A) = 1200mm Fixing centers (B) = 1000mm	1	K-C0350-12-P-*
Single pull bars Length (A) = 1200mm Fixing centers (B) = 1000mm	1	6-C0150-12-P-*
8B = Stainless Steel, 6 = Black		PU = Packaging Unit



### Additional information

- Made of stainless steel
- Fastening kit included with M8 screws for 1 3/4" and 2 1/4" doors





### Kit of Supporting Plate for Pull Bars

Description	Color	PU	Part Number
Kit of 4 round supporting plates for steel doors	Stainless Steel	1	K-C0960-00-0-8B
* = Color		PU = Packaging Unit	



### PEEK Cream Cleaner

Description	PU	Part Number
100mL tube	1	9-C9030-00-0-0
PU = Packaging Unit		

#### Additional information

- Cleans, polishes and protects the surface
- Leaves behind a light and invisible protective coating

# Accessories

for Pull Bars



### Kit of Roller Latch

Description	Color	PU	Part Number
Adjustable roller latch	Zinc	1	6-C0522-00-0-1
Adjustable roller latch	Black	1	6-C0522-00-0-6
* = Color		PU = Packaging Unit	

### Additional information

- Made of brass, zinc plated
- Adjustment for door gap
- Adjustment spring tension on roller
- Strike plate and 4 screws (#8 x 25.4mm) included for 1 3/4" doors



### Smart lock

Description	PU	Part Number
Universal module V3	1	6-C9403-00-0-0

#### Additional information

- 35mm x 40mm x 15mm, 14 grams
- Input 24V DC, 100mA
- Bluetooth 4.2 (Danalock app)
- Z-Wave (Automation hub)
- 256bit AES encryption level
- Compatible with A-opener and access controlled systems
- Refer to wire Diagram



### Bluetooth keypad

Description	PU	Part Number
Danapad V3	1	6-C9407-00-0-X
* = Color		PU = Packaging Unit
1 = Silver, 6 = Black		



#### Additional information

- 4 X AAA batteries (included)
- Bluetooth 4.2
- 256bit AES encryption level
- Compatible with smart lock (Danalock V3) and Universal Module

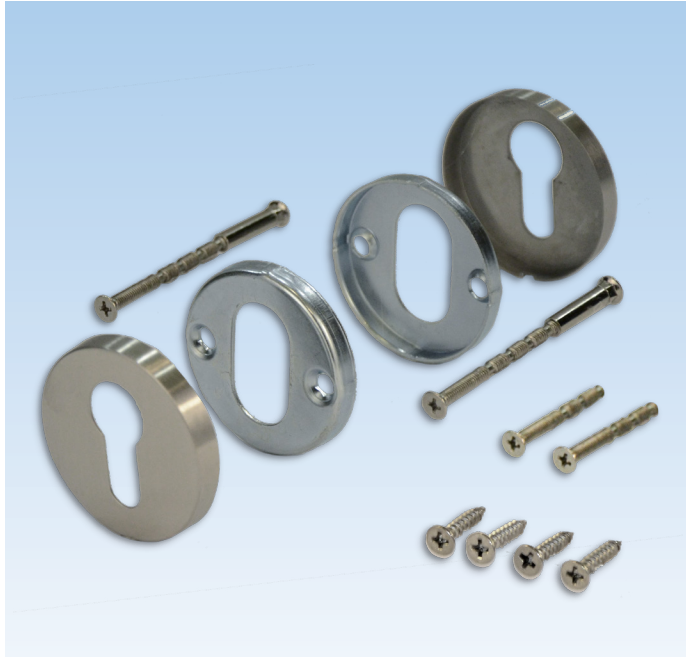


### Danalock Remote Access

Description	PU	Part Number
Danabridge V3	1	6-C9402-00-0-0

#### Additional information

- 53 mm x 53 mm x 32 mm / Weighs 36 g
- USB power supply
- Add remote access to smart locks (Danalock or Universal Module)
- 2 Smart locks can be controlled with one Danabridge (via Bluetooth 4.2)
- Communication with Wi-Fi 802.11b/g/n



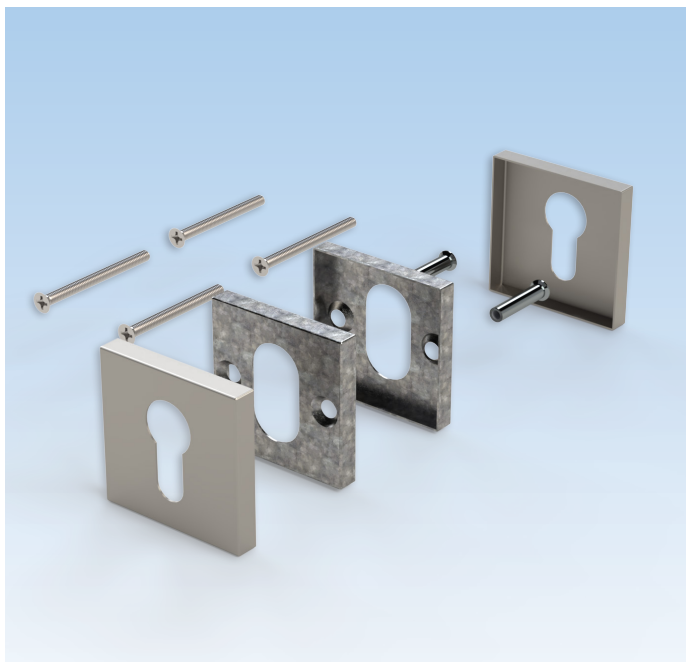
### Round Rosettes

Description	PU	Part Number
Rosettes for profile cylinder	1	K-C9075-00-0-*
* = Color	PU = Packaging Unit	
8B = Stainless Steel, 6 = Black		



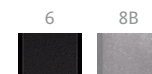
### Additional information

- Rosettes made of stainless steel
- Fastening kit included for 1 3/4" and 2 1/4" doors
- Compatible with smart lock (Danalock V3)
- For 1 3/4" doors : use 64mm cylinder (6-U7401-64-0-\*)
- For 2 1/4" doors : use 70mm cylinder (6-U7401-70-0-\*)
- For doors thicker than 2 1/4" up to 3" : cut to length 70mm screws (9-C0570-70-0-1) and 90mm cylinder (6-U7401-90-0-\*)
- External Ø 53 mm x 7.5 mm



### Square Rosettes

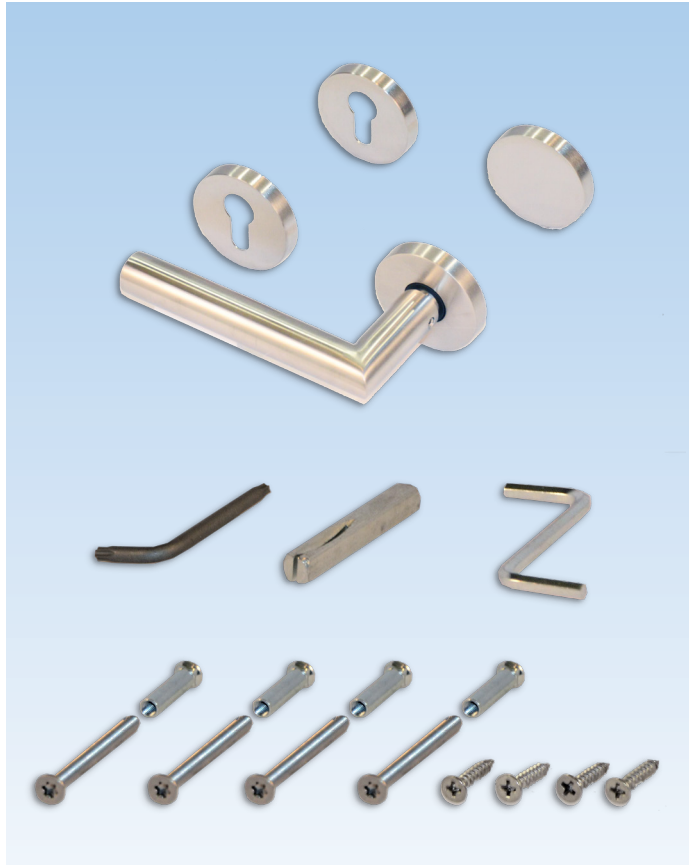
Description	PU	Part Number
Rosettes for profile cylinder	1	K-C9077-00-0-*
* = Color	PU = Packaging Unit	
8B = Stainless Steel, 6 = Black		



### Additional information

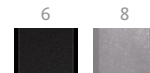
- Rosettes made of stainless steel
- Fastening kit included for 1 3/4" and 2 1/4" doors
- Compatible with smart lock (Danalock V3)
- For 1 3/4" doors : use 64mm cylinder (6-U7401-64-0-\*)
- For 2 1/4" doors : use 70mm cylinder (6-U7401-70-0-\*)
- For doors thicker than 2 1/4" up to 3" : cut to length 70mm screws (9-C0570-70-0-1) and 90mm cylinder (6-U7401-90-0-\*)
- External Ø 53 mm x 7.5 mm





### BELCANTO Half Handle Set and Rosettes

Description	PU	Part Number
Kit of inside handle with rosette and PZ rosette with outside blind rosette and PZ rosette	1	K-C9072-00-0-*
8 = Stainless Steel, 6 = Black		PU = Packaging Unit



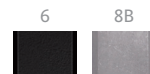
#### Additional information

- Fastening kit included for 1 3/4" and 2 1/4" doors
- For 1 3/4" doors : use 70mm cylinder (6-U7401-70-0-\*)
- For 2 1/4" doors : use 80mm cylinder (6-U7401-80-0-\*)



### BELCANTO Handle Set

Description	PU	Part Number
Kit of inside and outside handles	1	K-C9071-00-0-*
* = Color		PU = Packaging Unit
8B = Stainless Steel, 6 = Black		

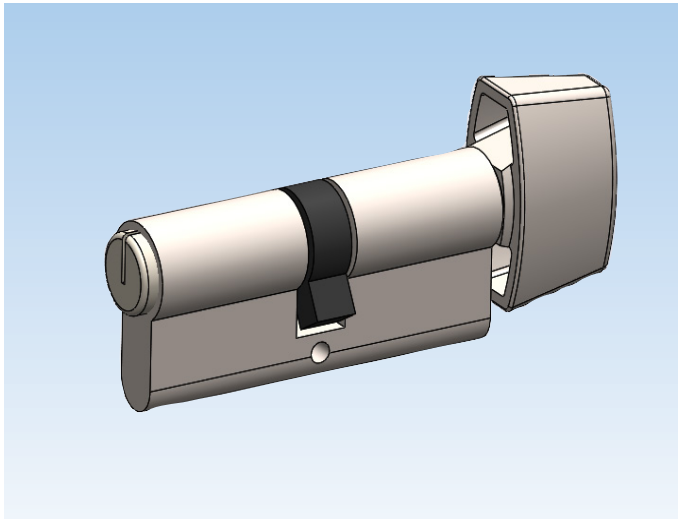


#### Additional information

- Handles and rosettes made of stainless steel
- Fastening kit included for 1 3/4" and 2 1/4" doors
- Fixed lever spring loaded - can't be lifted
- 8mm square spindle
- Concealed fixing screws
- Compatible with smart lock (Danalock V3)
- For doors thicker than 2 1/4" up to 3" : cut to length 70mm screws (9-C0570-70-0-1) and 130mm spindle (9-U8100-30-0-8)

\* Can't use active exterior handle with access controlled system (Use split spindle)

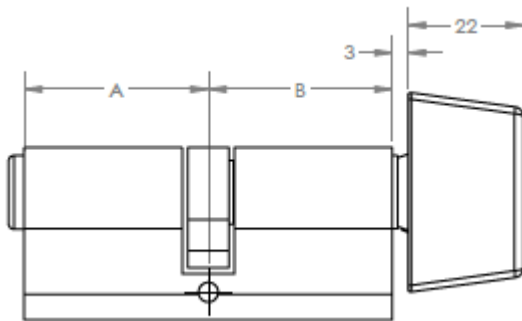
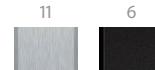
# Euro Profile Cylinder



### Profile cylinders

Description	A	B	PU	Part Number
32/32 Cylinder	32	32	1	6-U7401-64-0-*
35/35 Cylinder	35	35	1	6-U7401-70-0-*
40/40 Cylinder	40	40	1	6-U7401-80-0-*
45/45 Cylinder	45	45	1	6-U7401-90-0-11
50/50 Cylinder	50	50	1	6-U7401-00-0-11
10/40 Cylinder Thumbturn	10	40	1	6-U7402-40-0-11
10/45 Cylinder Thumbturn	10	45	1	6-U7402-45-0-11
Rekeying kit for Ferco Schlage keyway (not gripset)			1	K-C4332-00-0-0

11 = Satin Nickel, 6 = Black PU = Packaging Unit

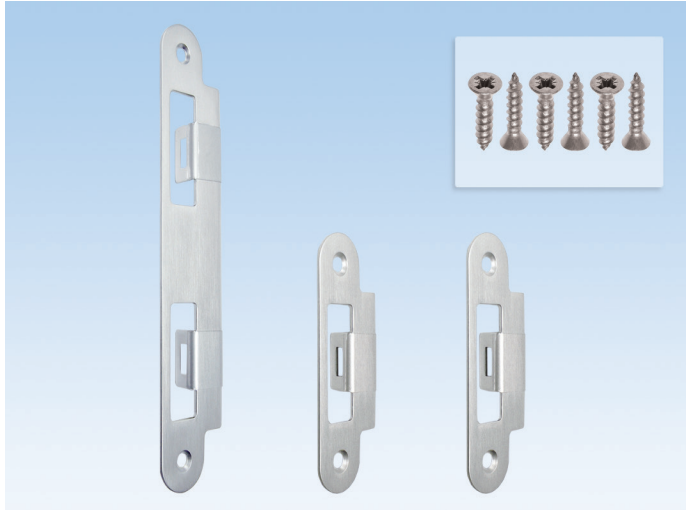


### Additional information

- Refer to rosette to select cylinder length
- For keyed alike profile cylinder add 9-C9995-00-0-0
- 3 keys included
- 70mm screw for backset up to 65mm (Cut to length)
- Schlage Keyway type "C" 5 pins

# Strike Plates

## Bag of Strike Plates



### Bag of Strike Plates

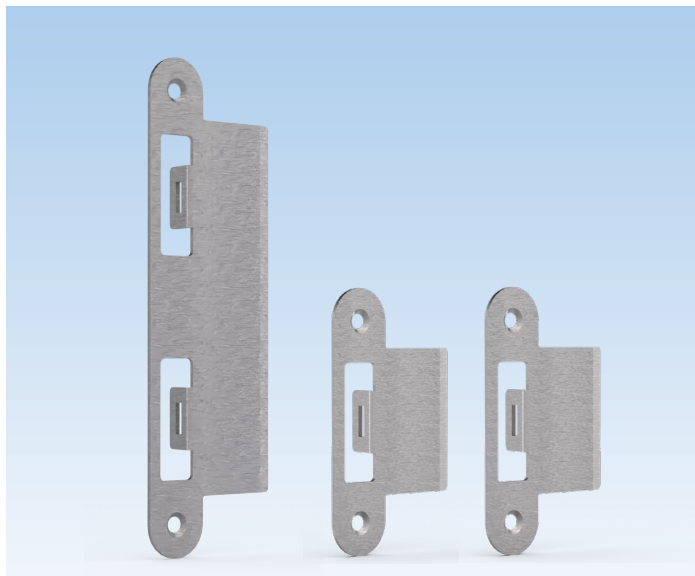
Description	Color	PU	Part Number
Bag of strike plates for 45mm (1 3/4") thick doors	Satin Nickel	50	K-C4774-45-0-*
Bag of strike plates for 57mm (2 1/4") thick doors	Satin Nickel	50	K-C4775-57-0-*

\* = Color      PU = Packaging Unit



### Additional information

- Made of stainless steel
- Bag contains:
  - 1 middle strike plate
  - 2 top and bottom strike plates
  - 6 screws
- Non-handed
- With clear protective film
- Available in handle matching finishes
- For SECURY Automatic door locks



### Bag of Strike Plates

Description	PU	Part Number
Bag of strike plates for 76mm (3") thick doors	1	K-C4777-59-0-*

\* = Color      PU = Packaging Unit

8B = Stainless Steel

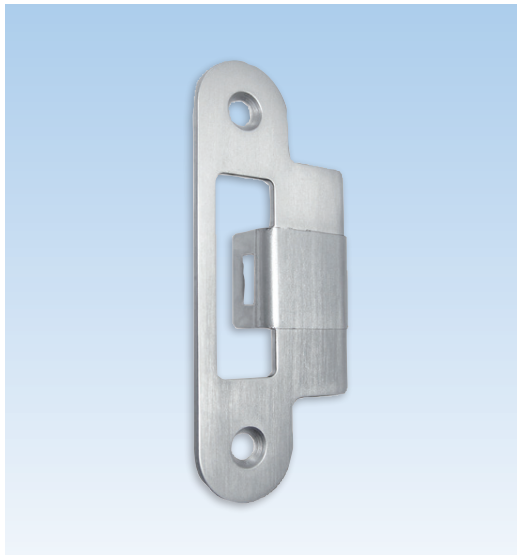


### Additional information

- Made in stainless steel
- Bag contains:
  - 1 middle striker with extended lip
  - 2 top and bottom strikers with extended lip
- Non-handed
- For use with GU-SECURY Automatic door locks

# Strike Plates

for Door Lock

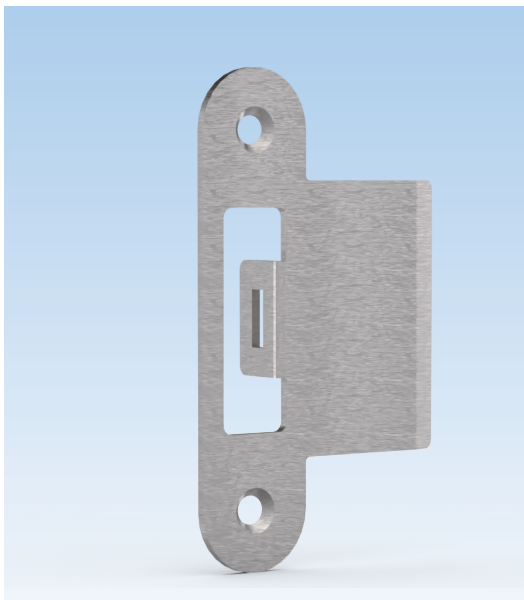


Striker with Extended Lip		
Description	PU	Part Number
Latchbolt strike plate for 45mm (1 3/4") thick doors	10	9-C4776-45-0-*
Latchbolt strike plate for 57mm (2 1/4") thick doors	10	9-C4776-57-0-*
* = Color		PU = Packaging Unit



### Additional information

- Made of stainless steel
- Non-handed
- With clear protective film
- Two #8 x 5/8 FH/PH screws included
- For use with Automatic extension



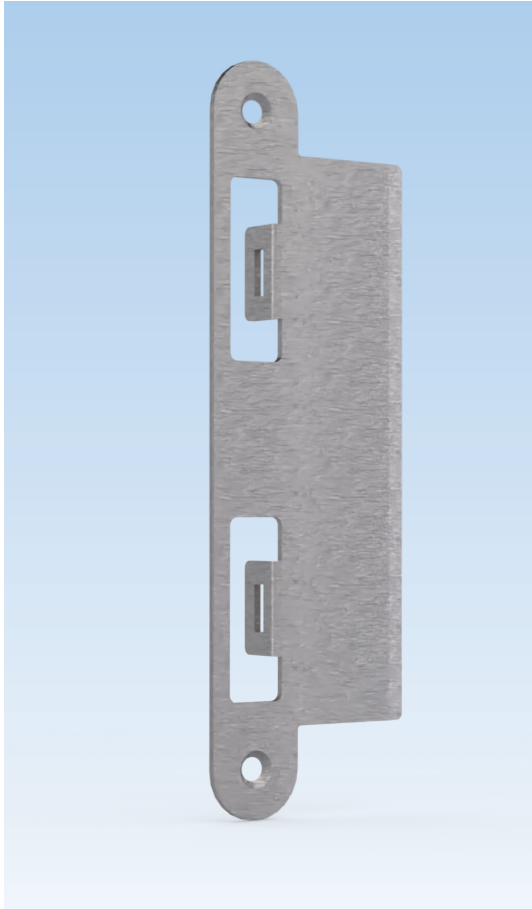
Top and Bottom Striker with Extended Lip		
Description	PU	Part Number
Latchbolt strike plate for 76mm (3") thick doors	10	9-C4716-59-0-*
* = Color		PU = Packaging Unit
8B = Stainless Steel		

### Additional information

- Made in stainless steel
- Non-handed
- Two #8 x 5/8 FH/PH screws included
- For use with GU-SECURY Automatic door lock

# Strike Plates

for Door Lock



### Middle Striker with Extended Lip

Description	PU	Part Number
Latch and deadbolt strike plate for 76mm (3") thick doors	10	9-C4717-59-0-*
* = Color		PU = Packaging Unit
8B = Stainless Steel		

8B



### Additional information

- Made in stainless steel
- Non-handed
- Two #8 x 5/8 FH/PH screws included
- For use with GU-SECURY Automatic door lock



## Substitute Faceplate

Description	Color	PU	Part Number
Substitute faceplate	Stainless steel	1	B-55606-00-1-1
* = Color		PU = Packaging Unit	

## Additional information

- Made of Stainless steel
- Replacement part for K-C5560-20-4-8 and K-C5560-23-4-8



## Dust Cup with Edge

Description	Color	PU	Part Number
Plastic cup - 25mm	Black	10	9-C4765-00-0-6
Plastic cup - 15mm	Black	10	9-C4765-0A-0-6
* = Color		PU = Packaging Unit	

## Additional information

- Use for latch and 2 automatic latches (optional)
- Dimensions for plastic cup - 25mm:
  - Length: 62mm
  - Width: 19.5mm
  - Depth: 25.8mm
- Dimensions for plastic cup - 15 mm:
  - Length: 62mm
  - Width: 19.5mm
  - Depth: 16mm

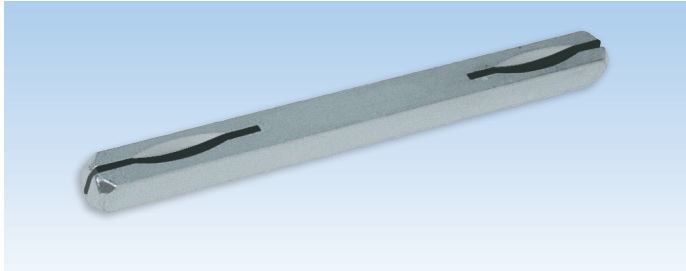


## Fastening Screws

Description	Color	PU	Part Number
D1 screws	Stainless Steel	1000	9-C5362-32-0-8
* = Color		PU = Packaging Unit	

## Additional information

- Stainless steel lock fastening screws
- Type D1 with self-drilling spiral point and high duplex thread with "Quadrex" socket
- Sharp tip for quick drive



### 8mm Spindle

Description		PU	Part Number
8 x 8 x 120mm spindle for 41-57mm thick doors <i>(1 spindle is supplied with door handle kit)</i>	Zinc	10	9-U8100-20-0-8
8 x 8 x 130mm spindle for 57-76mm thick doors	Zinc	10	9-U8100-30-0-8
* = Color		PU = Packaging Unit	



### Torx 15 T-Key

Description	Color	PU	Part Number
Torx key	Steel	1	H-00346-15-0-0
* = Color		PU = Packaging Unit	

#### Additional information

- Used for connecting SH2 and Automatic extensions



### 4mm Allen T-Key

Description	Color	PU	Part Number
Allen key	Steel	1	H-00345-04-0-0
* = Color		PU = Packaging Unit	

#### Additional information

- Used for reversing Automatic latchbolts on GU-SECURY Automatic lock and extension

# Accessories

For Door Lock



### Construction Key

Description	Color	PU	Part Number
Construction 7,8,10mm	Black	10	9-U0001-01-0-0
* = Color		PU = Packaging Unit	

### Additional information

The construction key is available for those who prefer to install the decorative hardware trim and lever sets on doors after the construction has been completed. Installing the escutcheon plates and levers in the final stage of construction prevents the decorative trim from becoming scratched or damaged.

The construction key has been designed to accommodate multipoint door hardware (8mm square), tilt-turn hardware (7mm square) and lift-slide hardware (10mm square).



### Construction Key

Description	Color	PU	Part Number
Key Tool Cylinder Length	Red	1	B 3539 0111
* = Color		PU = Packaging Unit	

### Additional information

The construction key is available for those who prefer to install the decorative hardware trim and lever sets on doors after the construction has been completed. Installing the escutcheon plates and levers in the final stage of construction prevents the decorative trim from becoming scratched or damaged.

Used to operate the multipoint door hardware through the profile cylinder opening, and to measure the profile cylinder length required from the side scale.





WINDOW TECHNOLOGY  
DOOR TECHNOLOGY  
AUTOMATIC ENTRANCE SYSTEMS  
BUILDING MANAGEMENT SYSTEMS

HEAD OFFICE

Ferco Architectural Hardware Inc.  
2000, Berlier St.  
Laval, QC H7L 4S4  
Tel.: 450 973-1437  
1 800 355-8810  
Fax: 450 973-7661  
ferco@ferco.ca

ONTARIO / WESTERN PROVINCES

Tel.: 905 282-9588  
1 800 668-5310  
Fax: 905 282-9915

UNITED STATES

Tel.: 1 800 927-1097  
Fax: 1 888 454-0161

[www.ferco.ca](http://www.ferco.ca)

Edition 05.2022 | Printed in Canada



Securing technology for you

