



WINDOW TECHNOLOGY
DOOR TECHNOLOGY
AUTOMATIC ENTRANCE SYSTEMS
BUILDING MANAGEMENT SYSTEMS



DOOR TECHNOLOGY – ORDER CATALOG | SECTION 03.11



Tools & Accessories for Door Lock Installation



Securing technology for you







03.11

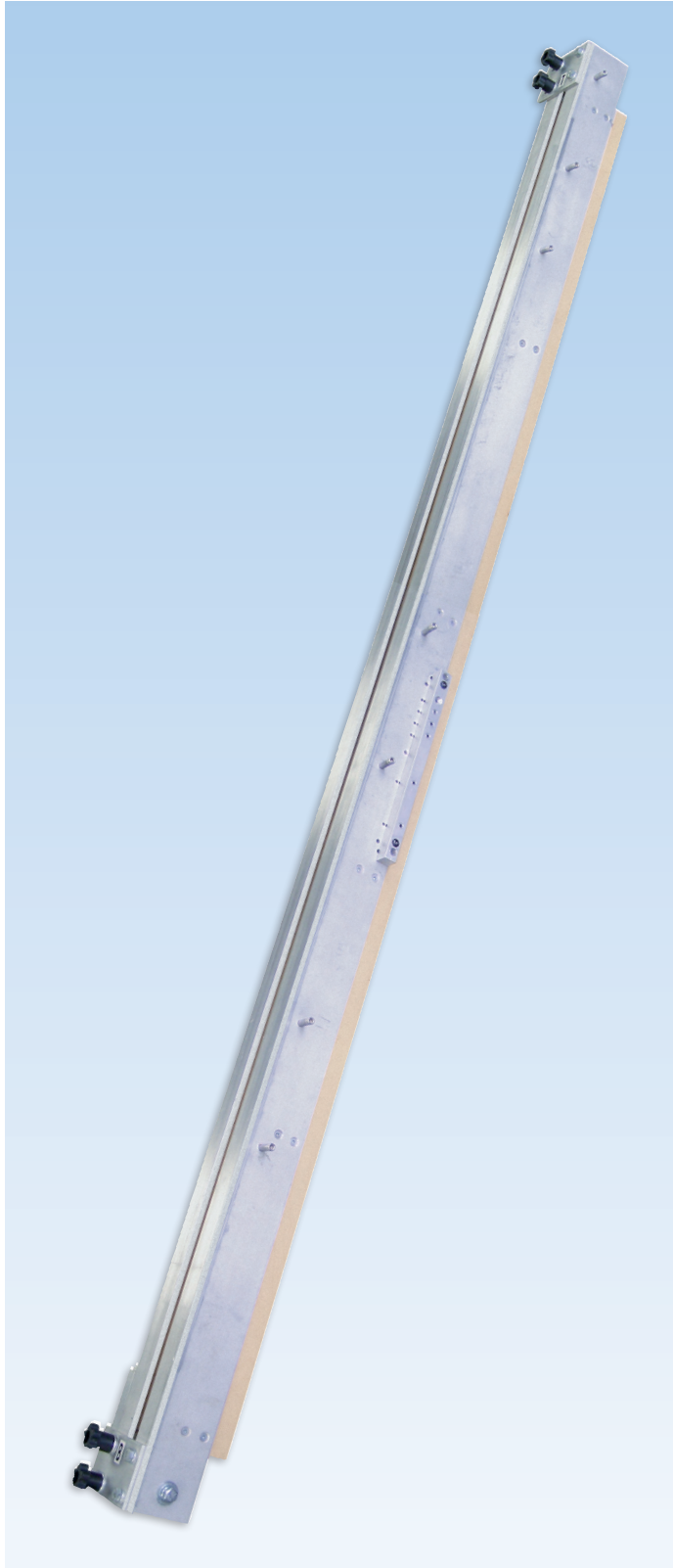
Tools & Accessories for Door Lock Installation

| | |
|--|----------|
| Door Slab Jig..... | 03.11.5 |
| Router Bases | 03.11.6 |
| Router Bits for Euro Groove and Mortise Lockcases..... | 03.11.7 |
| Strike Plates Template | 03.11.8 |
| Astragal Mortise Lock Template | 03.11.9 |
| Gripset Handle Hole Preparation Jig | 03.11.10 |
| Lever Handle Hole Preparation Jig | 03.11.11 |
| Accessories | 03.11.12 |



Door Slab Jig

for GU-SECURITY SH2, Automatic and S-Bolt Locks



Door Slab Jig

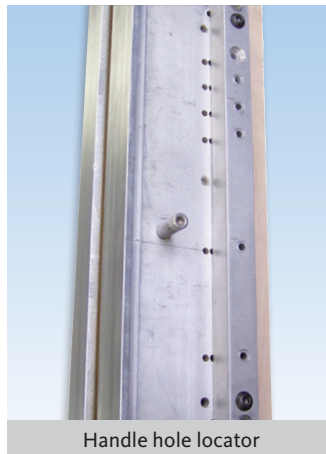
| Description | Color | PU | Part Number |
|----------------------------|----------|---------------------|----------------|
| Jig for 6' 8" and 8' doors | Aluminum | 1 | K-C8890-00-0-0 |
| * = Color | | PU = Packaging Unit | |

Additional information

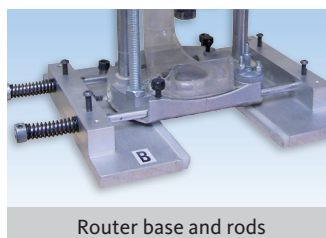
- Door slab jig for 6' 8" and 8' standard and custom door heights
- For 1 3/4" and 2 1/4" door thickness
- Includes router base and rods
- Includes lubricant, allen keys and handle holes locator
- Dewalt plunge router DW625 not included



Adjustable for door thickness



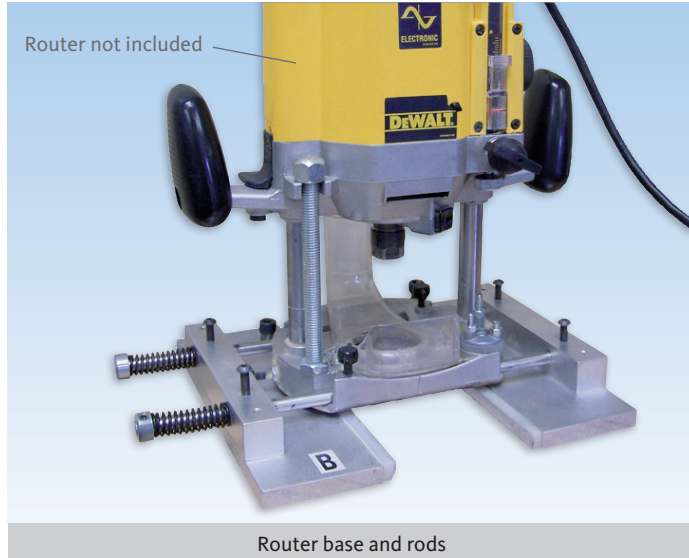
Handle hole locator



Router base and rods

Router Bases

for GU-SECURITY SH2, Automatic and S-Bolt Locks

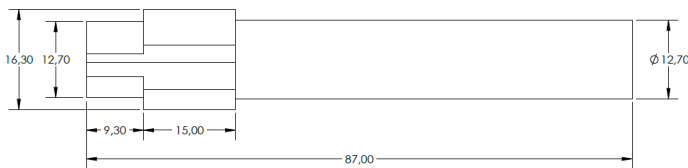
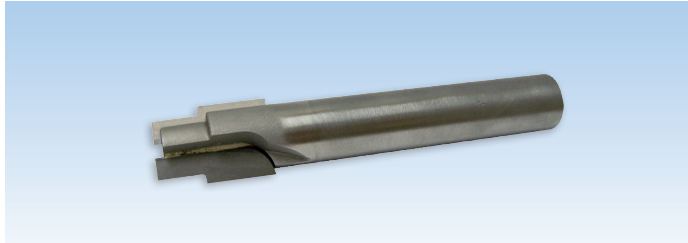


Router Bases

| Description | Color | PU | Part Number |
|-------------|----------|---------------------|----------------|
| Router base | Aluminum | 1 | K-C8895-DW-0-0 |
| * = Color | | PU = Packaging Unit | |

Router Bits

for Euro Groove and Mortise Lockcases

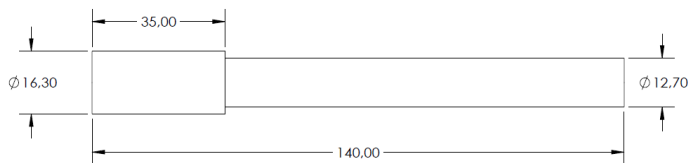
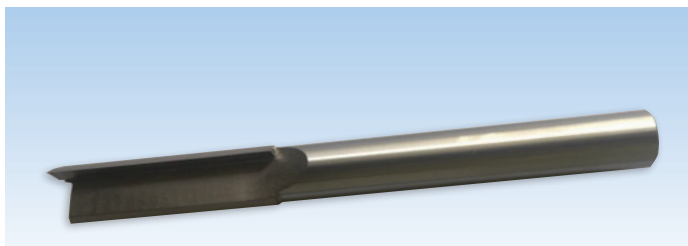


Stepped Router Bit for 12mm Depth Eurogroove

| Description | Color | PU | Part Number |
|-------------|-------|---------------------|----------------|
| Router bit | Steel | 1 | 9-C9271-00-0-0 |
| * = Color | | PU = Packaging Unit | |

Additional information

- To be used for all Secury door locks, and will provide a full depth standard size euro groove



Router Bit for Pocket

| Description | Color | PU | Part Number |
|-------------|-------|---------------------|----------------|
| Router bit | Steel | 1 | 9-C9274-00-0-0 |
| * = Color | | PU = Packaging Unit | |

Additional information

- Plunge router bit for mortise lockcases, max. plunge depth 80mm

Strike Plates Template

for GU-SECURITY SH2 and Automatic Locks



Template for Strike Plates with Lip

| Description | Color | PU | Part Number |
|---------------------------------|----------|---------------------|----------------|
| Template for 6' 8" and 8' doors | Aluminum | 1 | K-C8892-00-0-0 |
| * = Color | | PU = Packaging Unit | |

Additional information

- For 6' 8" and 8' doors
- Use for strike plate with lip K-C4774-45 and K-C4775-57
- Use for SECURITY Automatic door locks
- Includes 3/4" router bit and collar
- Includes template for dust cups (9-C4765-00-0-6)

Combination for Strike Plates with Lip & Oval Strike Plate

| Description | Color | PU | Part Number |
|---------------------------------|----------|---------------------|----------------|
| Template for 6' 8" and 8' doors | Aluminum | 1 | K-C8893-00-0-0 |
| * = Color | | PU = Packaging Unit | |

Additional information

- For 6' 8" and 8' doors
- Use for strike plate with lip K-C4774-45 and K-C4775-57 and oval strike plates K-C4770-45, K-C4770-57
- Use for SECURITY SH 2 and Automatic door locks
- Includes 3/4" router bit and collar
- Includes template for dust cups
- Includes removable inserts for oval strike plate

Astragal Mortise Lock Template



Template

| Description | Color | PU | Part Number |
|----------------|-------|---------------------|----------------|
| Template AML | | 1 | K-C8894-00-0-0 |
| Template AMLOC | | 1 | K-C8898-00-0-0 |
| * = Color | | PU = Packaging Unit | |

Additional information

- Use for astragal mortise lock
- Use for astragal mortise lock off centered
- Includes 1/2" router bit and collar

Gripset Handle Hole Preparation Jig



Gripset Jig

| Description | Color | PU | Part Number |
|-------------|----------|---------------------|----------------|
| Jig | Aluminum | 1 | K-C8899-00-0-0 |
| * = Color | | PU = Packaging Unit | |

Additional information

- Aluminum template
- Collar: Lee valley 46J91-17(cut down) + ring nut 46J91-11
Router bit: Freud bit 12-142- 1/2" x 2" cutting depth x 5/8" double fluted

Lever Handle Hole Preparation Jig



Lever Handle Jig

| Description | Color | PU | Part Number |
|-------------|----------|---------------------|----------------|
| Jig | Aluminum | 1 | K-C8880-00-0-0 |
| * = Color | | PU = Packaging Unit | |

Additional information

- Aluminum template
- Collar: Lee valley 46J91-17(cut down) + ring nut 46J91-11
- Router bit: Freud bit 12-142- 1/2"x 2" cutting depth x 5/8" double fluted
- Fixed backset 60mm



Torx 15 T-Key

| Description | Color | PU | Part Number |
|-------------|-------|---------------------|----------------|
| Torx key | Steel | 1 | H-00346-15-0-0 |
| * = Color | | PU = Packaging Unit | |

Additional information

- Used for connecting SH2 and Automatic extensions



4mm Allen T-Key

| Description | Color | PU | Part Number |
|-------------|-------|---------------------|----------------|
| Allen key | Steel | 1 | H-00345-04-0-0 |
| * = Color | | PU = Packaging Unit | |

Additional information

- Used for reversing Automatic latchbolts on GU-SECURY Automatic lock and extension

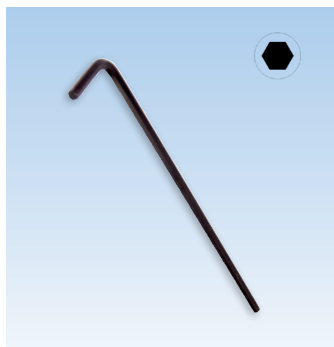


Fastening Screws

| Description | Color | PU | Part Number |
|-------------|-----------------|---------------------|----------------|
| D1 screws | Stainless Steel | 1000 | 9-C5362-32-0-8 |
| * = Color | | PU = Packaging Unit | |

Additional information

- Stainless steel lock fastening screws
- Type D1 with self-drilling spiral point and high duplex thread with "Quadrex" socket
- Sharp tip for quick drive



Allen Key 2,5mm x 100mm

| Description | Color | PU | Part Number |
|--|-------|---------------------|----------------|
| Allen key <i>(1 Allen key is supplied with door handle kit)</i> | Black | 1 | 9-C0955-10-0-0 |
| * = Color | | PU = Packaging Unit | |



Allen T-Key 2,5mm x 152mm

| Description | Color | PU | Part Number |
|-------------|-------|---------------------|----------------|
| Allen key | Steel | 1 | 6-C0560-20-0-0 |
| * = Color | | PU = Packaging Unit | |

Additional information

- Used for connecting SH2 and Automatic extensions



Construction Handle Set

| Description | Color | PU | Part Number |
|---------------------|-------|---------------------|----------------|
| Construction handle | Black | 25 | K-C9250-25-0-6 |
| * = Color | | PU = Packaging Unit | |

Additional information

- Reinforced nylon temporary door trim sets
- 8 x 8 x 90mm square spindle included
- 4.2 x 50mm screws included
- For 1 3/4" thick doors
- Locking/Unlocking from inside only



Construction Key

| Description | Color | PU | Part Number |
|------------------|-------|---------------------|----------------|
| Construction key | Black | 10 | 9-U0001-01-0-0 |
| * = Color | | PU = Packaging Unit | |

Additional information

The construction key is available for those who prefer to install the decorative hardware trim and lever sets on doors after the construction has been completed. Installing the escutcheon plates and levers in the final stage of construction prevents the decorative trim from becoming scratched or damaged.

The construction key has been designed to accommodate multipoint door hardware (8mm square), tilt-turn hardware (7mm square) and lift-slide hardware (10mm square).



Lined area for taking notes, consisting of multiple horizontal lines.

03
11



WINDOW TECHNOLOGY
DOOR TECHNOLOGY
AUTOMATIC ENTRANCE SYSTEMS
BUILDING MANAGEMENT SYSTEMS

QUÉBEC / MARITIMES

Ferco Ferrures de Bâtiment Inc.
2000, Rue Berlier
Laval, QC H7L 4S4
Canada

T 450 973-1437
1 800 355-8810
F 450 973-7661
ferco@ferco.ca

ONTARIO / WESTERN PROVINCES

Ferco Architectural Hardware Inc.
T 905 282-9588
1 800 668-5310
F 905 282-9915

UNITED STATES

Ferco Architectural Hardware Inc.
T 1 800 927-1097
F 1 888 454-0161

www.ferco.ca

Securing technology for you

