



WINDOW TECHNOLOGY
DOOR TECHNOLOGY
AUTOMATIC ENTRANCE SYSTEMS
BUILDING MANAGEMENT SYSTEMS



WINDOW TECHNOLOGY – ORDER CATALOG | SECTION 02.2



Push-Out Casement Window Hardware



Securing technology for you

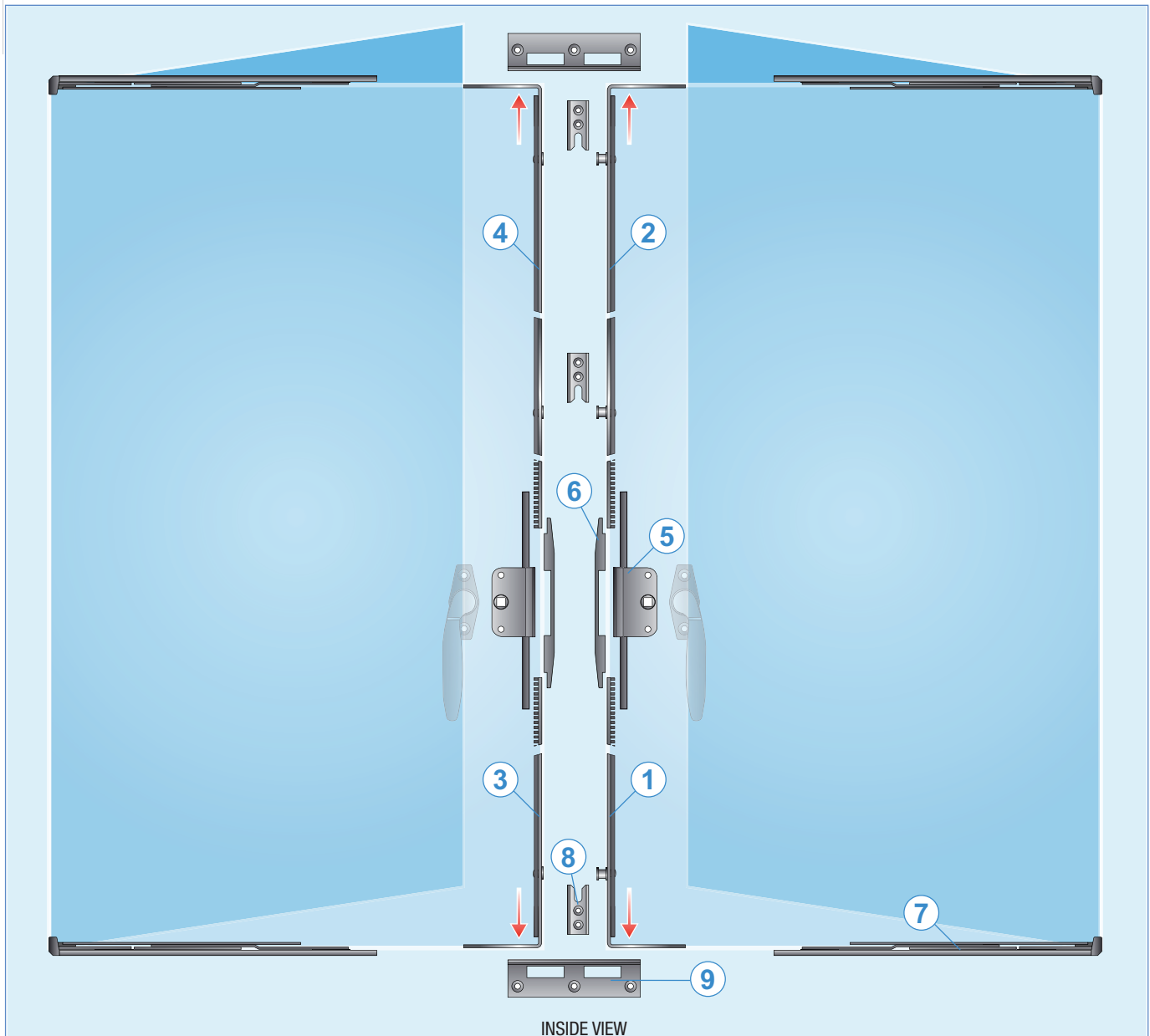




02.2

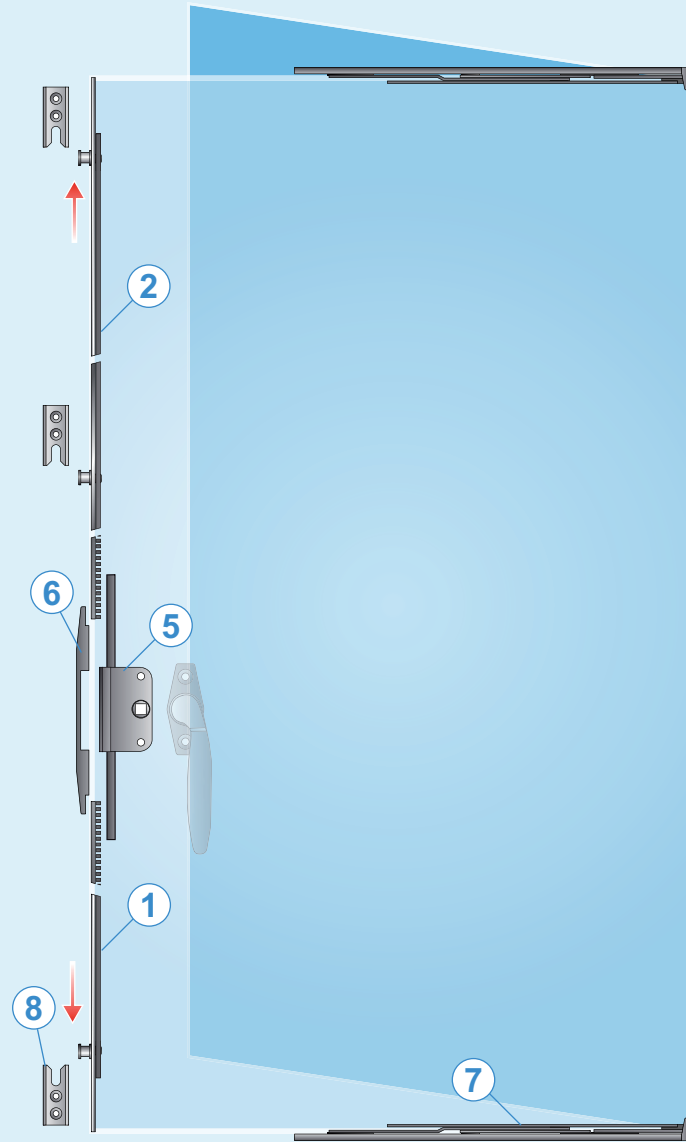
Push-out Casement Window Hardware

French Push-Out Casement Window	02.2.5
Single Push-Out Casement Window	02.2.6
Gear Box	02.2.7
Shoot Extensions with Cams	02.2.8
Shoot Extensions	02.2.9
Extensions with Cams	02.2.10
Extension	02.2.11
Strike Plates	02.2.12
Strike Cups	02.2.13
Defender Egress Friction Hinges	02.2.14
Restrictors	02.2.15



Push-out double panel system		
Description	Quantity	Part Number
1 Shoot extension with cam (bottom)	1	6-C3000-XX-0-11
2 Shoot extension with cams (top)	1	6-C3000-XX-0-11
3 Shoot extension without cam (bottom)	1	6-C2730-XX-0-9
4 Shoot extension without cam (top)	1	6-C2730-XX-0-9
5 Gear box	2	6-C0617-22-0-1
6 Cover for gear box	2	9-C0617-00-0-1
7 Defender egress friction hinges	2	6-C8632-XX-P-8
8 Standard keeper for locking cams	2-6	9-C0115-01-0-8B
9 Head & sill strike plate for shoot bolts	2	9-C0115-02-0-8B

Single Push-out Casement Window



INSIDE VIEW

Push-out single panel system without shoots

Description	Quantity	Part Number
1 Extension with cam (bottom)	1	6-C2735-XX-0-9
2 Extension with cams (top)	1	6-C2735-XX-0-9
5 Gear box	1	6-C0617-22-0-1
6 Cover for gear box	1	9-C0617-00-0-1
7 Defender egress friction hinges	1	6-C8632-XX-P-8
8 Standard keeper for locking cams	2-6	9-C0115-01-0-8B

Gear Box and Cover



Gear Box – 22mm Backset

Description	Color	PU	Part Number
Gear box	Zinc	25	6-C0617-22-0-1
* = Color		PU = Packaging Unit	

Additional information

- Made of "Zamak"
- 7mm spindle hole
- Use M5 screws
- Used with shoot extensions

02
2



Cover

Description	Color	PU	Part Number
Cover for gear box	Aluminum	100	9-C0617-00-0-1
* = Color		PU = Packaging Unit	

Additional information

- Made of "Zamak"
- Used to cover the gear box
- Recommended Stainless Steel screws 9-C5362-32-0-8



Shoot Extensions

Description	Cam	Color	PU	Part Number
208mm extension	1	Grey	40	6-C3000-00-0-11
400mm extension	1	Grey	40	6-C3000-02-0-11
490mm extension	2	Grey	40	6-C3000-03-0-11
640mm extension	2	Grey	40	6-C3000-04-0-11
808mm extension	2	Grey	40	6-C3000-08-0-11
1008mm extension	2	Grey	40	6-C3000-10-0-11
1208mm extension	3	Grey	30	6-C3000-12-0-11
1408mm extension	3	Grey	30	6-C3000-14-0-11

* = Color PU = Packaging Unit

Additional information

- Made of steel with enhanced corrosion protection coating
- Secure multiple locking points
- Adjustable mushroom locking cams (cam travel is 18mm)
- Shoot bolt projection 14mm (at top and bottom)
- Preset extensions for easy installation
- Extension size range overlap for the most popular window sizes
- Recommended Stainless Steel screws 9-C5362-32-0-8



Shoot Extensions

Description	Color	PU	Part Number
208mm extension	Grey	40	6-C2730-00-0-9
400mm extension	Grey	40	6-C2730-02-0-9
490mm extension	Grey	40	6-C2730-03-0-9
640mm extension	Grey	40	6-C2730-04-0-9
808mm extension	Grey	40	6-C2730-08-0-9
1008mm extension	Grey	40	6-C2730-10-0-9
1208mm extension	Grey	30	6-C2730-12-0-9
1408mm extension	Grey	30	6-C2730-14-0-9
* = Color		PU = Packaging Unit	

Additional information

- Made of steel with enhanced corrosion protection coating
- Shoot bolt projection 14mm (at top and bottom)
- Preset extensions for easy installation
- Extension size range overlap for the most popular window sizes
- Recommended Stainless Steel screws 9-C5362-32-0-8



Extensions

Description	Cam	Color	PU	Part Number
199mm extension	1	Grey	40	6-C2735-00-0-9
391mm extension	1	Grey	40	6-C2735-02-0-9
481mm extension	2	Grey	40	6-C2735-03-0-9
631mm extension	2	Grey	40	6-C2735-04-0-9
799mm extension	2	Grey	40	6-C2735-08-0-9
999mm extension	2	Grey	40	6-C2735-10-0-9
1199mm extension	3	Grey	30	6-C2735-12-0-9
1399mm extension	3	Grey	30	6-C2735-14-0-9

* = Color PU = Packaging Unit

Additional information

- Made of steel with enhanced corrosion protection coating
- Secure multiple locking points
- Adjustable mushroom locking cams (cam travel is 18mm)
- Preset extensions for easy installation
- Extension size range overlap for the most popular window sizes
- Recommended Stainless Steel screws 9-C5362-32-0-8



Extensions

Description	Color	PU	Part Number
250mm extension	Grey	10	8-00625-00-0-9
500mm extension	Grey	10	G-16790-05-0-9
* = Color		PU = Packaging Unit	

Additional information

- Made of steel with enhanced corrosion protection coating
- Used with shoot extensions
- Recommended Stainless Steel screws 9-C5362-32-0-8

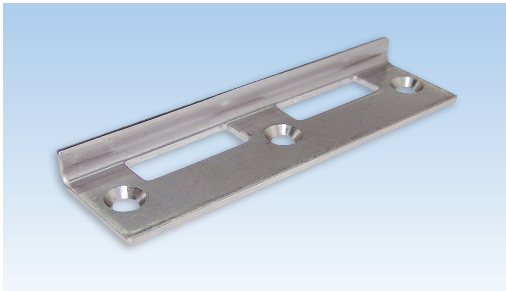


Strike Plate

Description	Color	PU	Part Number
Strike plate for locking cam	SS	1	9-C0115-01-0-8B
* = Color		PU = Packaging Unit	

Additional information

- Made of 304 Stainless Steel
- Used with series 6-C2730, 6-C2735 and 6-C3000
- Recommended Stainless Steel screws 9-C5362-32-0-8



Strike Plate

Description	Color	PU	Part Number
Strike pate for shoot bolt (head and sill)	SS	1	9-C0115-02-0-8B
* = Color		PU = Packaging Unit	

Additional information

- Made of 304 Stainless Steel
- Used with series 6-C2730, 6-C2735 and 6-C3000
- Recommended Stainless Steel screws 9-C5362-32-0-8

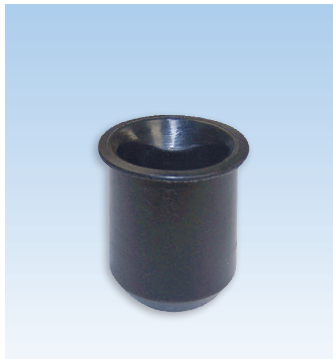


Striker Cup – Ø10 x 22mm

Description	Color	PU	Part Number
Solid brass striker cup for shoot bolts	Brass	10	9-29525-00-0-0
* = Color PU = Packaging Unit			

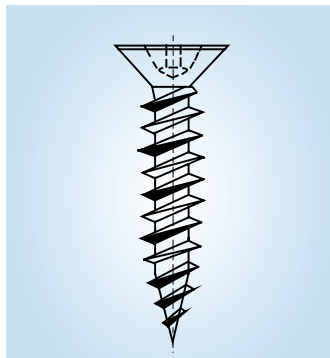
Striker Cup – Ø10 x 19mm

Description	Color	PU	Part Number
Plastic striker cup for shoot bolts	Black	100	0-0736A-00-0-0
* = Color PU = Packaging Unit			



Striker Cup – Ø10 x 22/27mm

Description	Color	PU	Part Number
Plastic striker cup 22mm for shoot bolts	Black	100	9-C4306-22-0-0
Plastic striker cup 27mm for shoot bolts	Black	100	9-C4306-27-0-0
* = Color PU = Packaging Unit			



Fixing Screws – 3.9 x 32mm

Description	Color	PU	Part Number
D1 screw	SS	1000	9-C5362-32-0-8
* = Color PU = Packaging Unit			

Additional information

- Made of stainless steel
- Type D1 with self-drilling spiral point and high duplex thread with "Quadrex" socket
- Sharp tip for quick drive

Defender Egress Hinges

for Emergency Exit with Easy Cleaning Facility



Hinges in easy clean position

Defender Egress 12" and 16" Friction Hinges

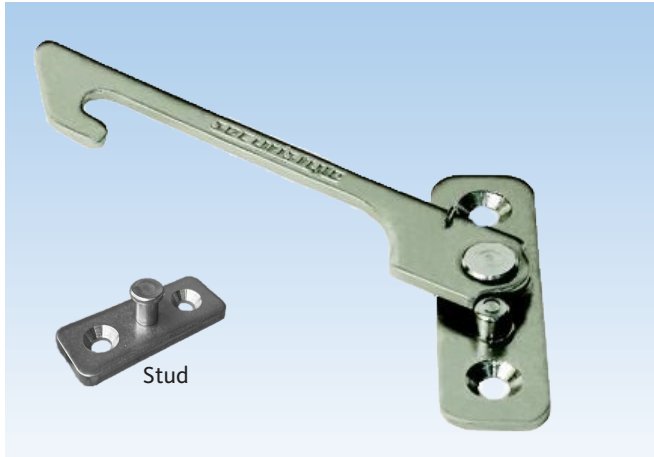
Description	Color	PU	Part Number
Defender egress hinge 12"	SS	25	6-C8632-12-P-8
Defender egress hinge 16"	SS	25	6-C8632-16-P-8
* = Color PU = Packaging Unit			

Additional information

- Allows casement windows to open to a full 90° for emergency exit
- Release mechanism allows cleaning access from the inside of the building
- Automatically resets to the fire escape mode when the window is closed
- All metal components made from high grade 304 Stainless Steel

Technical Informations

Description	Hinge Length (in/mm)	Max. Vent Weight (kg)	Min. Vent Height (mm)	Max. Vent Height (mm)	Min. Vent Width (mm)	Max. Vent Width (mm)	Cavity Dimensions (mm)	Opening Angle (± 2,5°)
Defender Egress 12"	12/310	22	-	-	300	600	16-18.5	80°
Defender Egress 16"	16/412	24	-	-	400	700	16-18.5	90°



Restrictors

Description	Color	PU	Part Number
66mm Restrictor	SS	1	6-C8659-00-R-8B
116mm Restrictor	SS	1	6-C8660-00-R-8B
Stud 13mm / 16mm	SS	1	6-C8658-XX-0-8B
PU = Packaging Unit			

Additional information

- Made of 304 Stainless steel
- Easy to fit with no routing
- Compatible with standard duty hinges
- Enhanced corrosion resistance



WINDOW TECHNOLOGY
DOOR TECHNOLOGY
AUTOMATIC ENTRANCE SYSTEMS
BUILDING MANAGEMENT SYSTEMS

HEAD OFFICE

Ferco Architectural Hardware Inc.
2000, Berlier St.
Laval, QC H7L 4S4
Tel.: 450 973-1437
1 800 355-8810
Fax: 450 973-7661
ferco@ferco.ca

ONTARIO / WESTERN PROVINCES

Tel.: 905 282-9588
1 800 668-5310
Fax: 905 282-9915

UNITED STATES

Tel.: 1 800 927-1097
Fax: 1 888 454-0161

www.ferco.ca

Edition 01.2022 | Printed in Canada

Securing technology for you

