



WINDOW TECHNOLOGY  
DOOR TECHNOLOGY  
AUTOMATIC ENTRANCE SYSTEMS  
BUILDING MANAGEMENT SYSTEMS



WINDOW TECHNOLOGY – ORDER CATALOG | SECTION 02.1



## Casement & Awning Windows Hardware



Securing technology for you







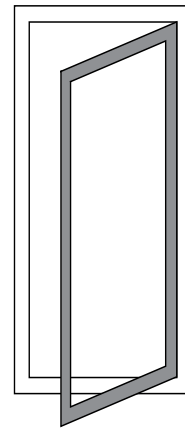
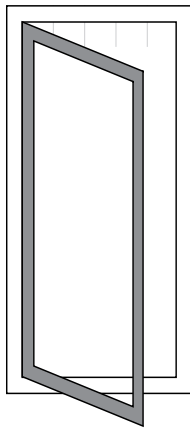
# 02.1

## Casement & Awning Windows Hardware

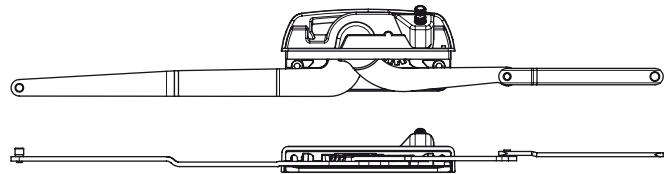
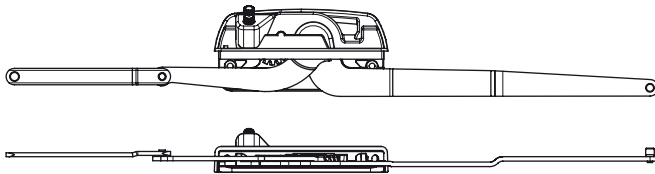
|   |         |
|---|---------|
| SS Dyad and Dual Arm Operator .....                 | 02.1.5  |
| Covers & Fold-in Handles.....                       | 02.1.6  |
| SS Track and Brackets for Casement Operators .....  | 02.1.7  |
| Awning SS Operator and Track .....                  | 02.1.8  |
| Covers & Fold-in Handles for awning & casement..... | 02.1.9  |
| Casement and Awning Hinges .....                    | 02.1.10 |
| Accessories For Hinges .....                        | 02.1.12 |
| <b>Multipoint</b> Locking Handles.....              | 02.1.13 |
| Single point Locking Handles.....                   | 02.1.15 |
| Multipoint Locking Bars & Half Reaching Wedge ..... | 02.1.17 |
| Guide Shims for Multipoint Locking Bars .....       | 02.1.20 |
| Keepers for Multipoint Locking Bars .....           | 02.1.21 |
| Single Point Keepers .....                          | 02.1.23 |
| Restrictors .....                                   | 02.1.24 |
| Accessories.....                                    | 02.1.25 |

# Left/Right Hand Identification

for Casement Window Hardware



## OUTSWING WINDOWS (VIEWED FROM OUTSIDE)

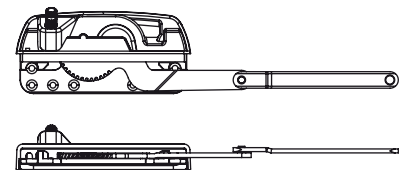
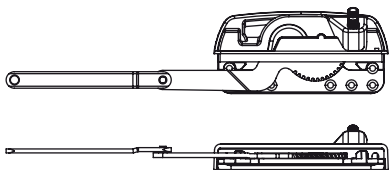


### LEFT-HAND DUAL ARM OPERATOR

6-C2331-00-L-8  
(use cover kit type A)

### RIGHT-HAND DUAL ARM OPERATOR

6-C2331-00-R-8  
(use cover kit type B)

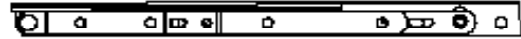


### LEFT-HAND DYAD OPERATOR

6-C2332-00-L-8  
(use cover kit type B)

### RIGHT-HAND DYAD OPERATOR

6-C2332-00-R-8  
(use cover kit type A)



### CASEMENT HINGES

6-C2431-XX-A/B-8B  
6-C2480-XX-A/B-8B  
(For this window position, use type A)

### CASEMENT HINGES

6-C2431-XX-A/B-8B  
6-C2480-XX-A/B-8B  
(For this window position, use type B)



### HALF REACHING WEDGE (A)

9-C0148-00-A-6

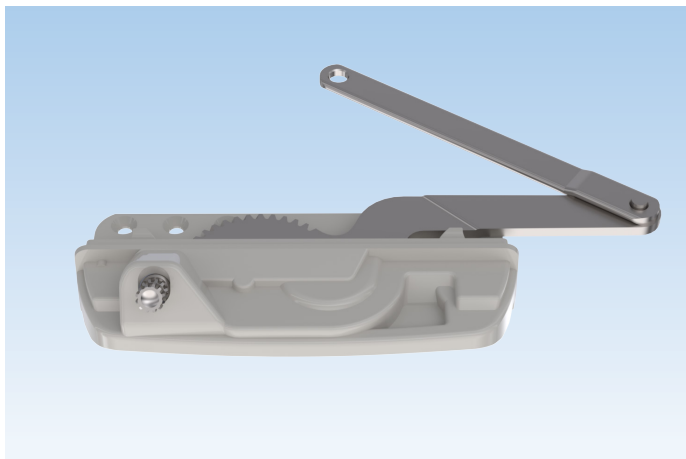


### HALF REACHING WEDGE (B)

9-C0148-00-B-6

# Dyad and Dual Arm Stainless Steel Operators

with Removable Cover and Fold-in Handle



## Dyad Operator

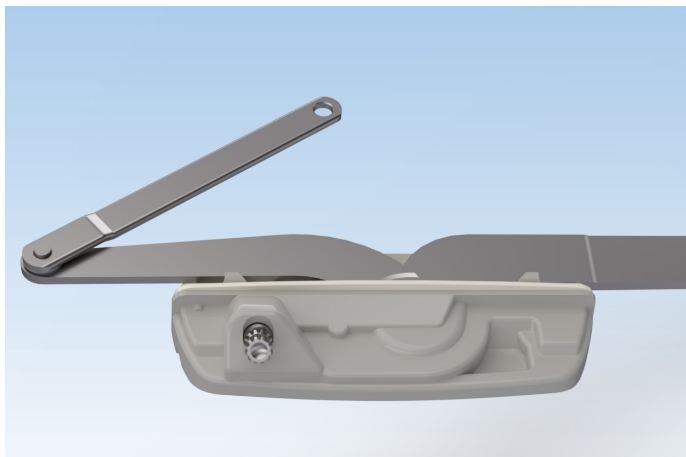
| Description                                  | Color | PU | Part Number      |
|--|-------|----|------------------|
| Operator for casement windows                | SS    | 20 | 6-C2332-00-L/R-8 |
| Operator for casement windows with short arm | SS    | 20 | 6-C2332-MC-L/R-8 |

L/R = Left-handed/Right-handed

PU = Packaging Unit

### Additional information

- Tempered stainless steel arms
- Powder coated base made of "Zamak"
- Industry standard cutouts
- AAMA Compliance
- Used with covers:
  - left-handed (L) use cover kit type B
  - right-handed (R) use cover kit type A



## Dual Arm Operator

| Description                                  | Color | PU | Part Number      |
|--|-------|----|------------------|
| Operator for casement windows                | SS    | 20 | 6-C2331-00-L/R-8 |
| Operator for casement windows with short arm | SS    | 20 | 6-C2331-MC-L/R-8 |

L/R = Left-handed/Right-handed

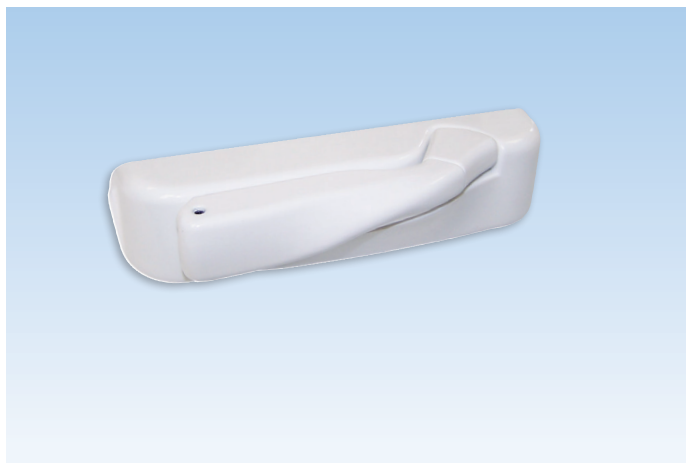
PU = Packaging Unit

### Additional information

- Tempered stainless steel arms
- Powder coated base made of "Zamak"
- Industry standard cutouts
- Minimum frame width 533,4mm (21")
- AAMA Compliance
- Used with covers:
  - left-handed (L) use cover kit type A
  - right-handed (R) use cover kit type B

# Removable cover and Fold-in Handle

For Casement

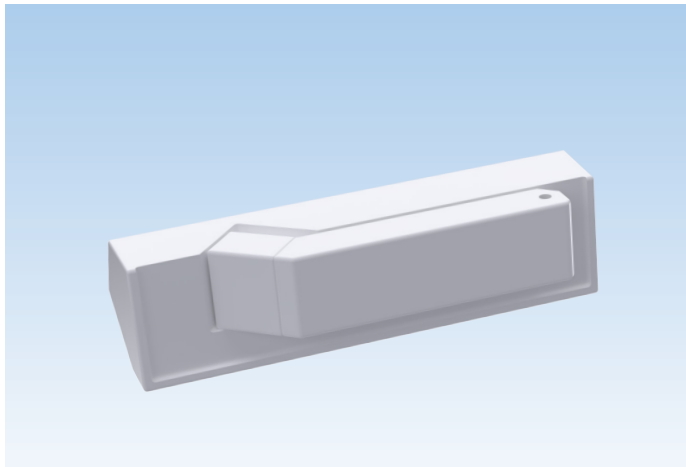


## FENIX CLASSIC Removable Cover & Fold-in Handle kit

| Description                           | PU  | Part Number         |
|---------------------------------------|-----|---------------------|
| Kit type A                            | 100 | 6-C2345-02-A-*      |
| Kit type B                            | 100 | 6-C2345-02-B-*      |
| * = Color                             |     | PU = Packaging Unit |
| 7 = White, 27 = Blue White, 6 = Black |     | 6                   |

### Additional information

- Once the window is closed, the handle folds and snaps into the cover once the window is closed

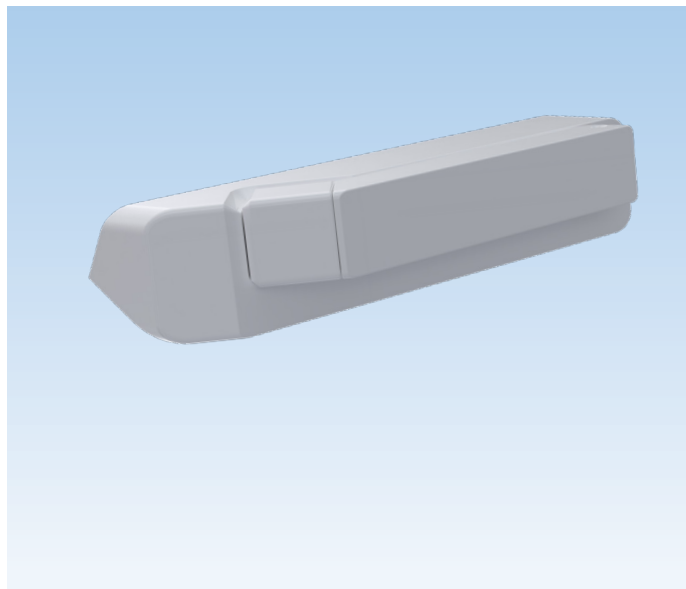


## FENIX EVO Removable Cover & Fold-in Handle kit

| Description                           | PU | Part Number         |
|---------------------------------------|----|---------------------|
| Kit type A                            | 10 | 6-C2350-00-A-*      |
| Kit type B                            | 10 | 6-C2350-00-B-*      |
| * = Color                             |    | PU = Packaging Unit |
| 7 = White, 27 = Blue White, 6 = Black |    | 7 27 6              |

### Additional information

- Once the window is closed, the handle folds and snaps into the cover once the window is closed



## FENIX EVO 2 Removable Cover & Fold-in Handle kit

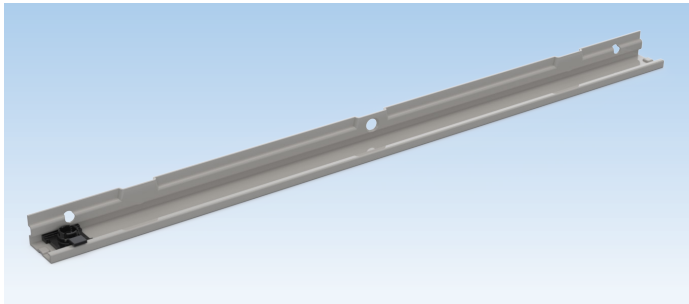
| Description  | PU | Part Number         |
|--|----|---------------------|
| Kit type A   | 10 | 6-C2352-00-A-*      |
| Kit type B   | 10 | 6-C2352-00-B-*      |
| * = Color  |    | PU = Packaging Unit |
| 7V = Matte White, 27V = Matte Blue White, 6V = Matte Black |    | 7V 27V 6V           |

### Additional information

- Once the window is closed, the handle folds and snaps into the cover once the window is closed

# Stainless Steel Track and Brackets

For Casement

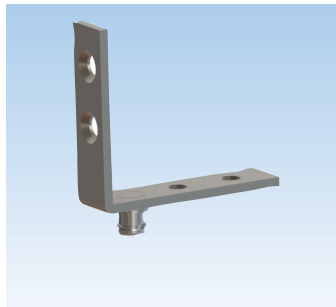


### Track for Dual Arm Operator

| Description             | Color | PU  | Part Number    |
|-------------------------|-------|-----|----------------|
| Track with slider guide | SS    | 200 | 6-C2336-00-0-8 |
| PU = Packaging Unit     |       |     |                |

#### Additional information

- Made of stainless steel
- Recommended to use SS screws 9-C9681-00-0-8 or 9-C9686-00-0-8 for installation

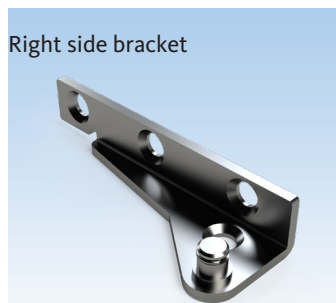


### 90° Bracket

| Description                    | Color | PU  | Part Number    |
|--------------------------------|-------|-----|----------------|
| Bracket for casement operators | SS    | 200 | 6-C2320-00-0-8 |
| PU = Packaging Unit            |       |     |                |

#### Additional information

- Made of stainless steel
- Snap-on pivot
- Recommended to use SS screws 9-C9681-00-0-8 or 9-C9686-00-0-8 for installation



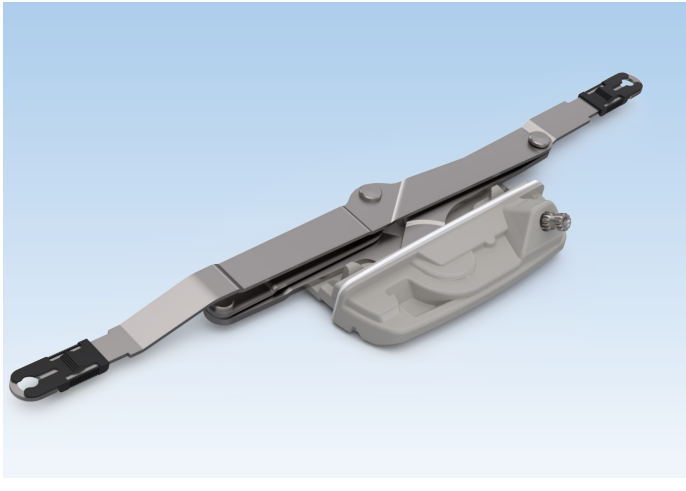
Right side bracket

### Surface mounted stud bracket

| Description         | Color | PU  | Part Number       |
|---------------------|-------|-----|-------------------|
| 25 mm stud bracket  | SS    | 200 | 6-C2307-00-L/R-8B |
| PU = Packaging Unit |       |     |                   |

#### Additional information

- Made of stainless steel
- Snap-on pivot
- Recommended to use SS screws 9-C9681-00-0-8 or 9-C9686-00-0-8 for installation



### Scissor Arm Operator

| Description                 | Color | PU | Part Number    |
|-----------------------------|-------|----|----------------|
| Operator for awning windows | SS    | 20 | 6-C2340-00-0-8 |
| PU = Packaging Unit         |       |    |                |

#### Additional information

- Tempered stainless steel arms
- Powder coated base made of "Zamak"
- Industry standard cutouts
- AAMA Compliance
- Used with cover kit type A



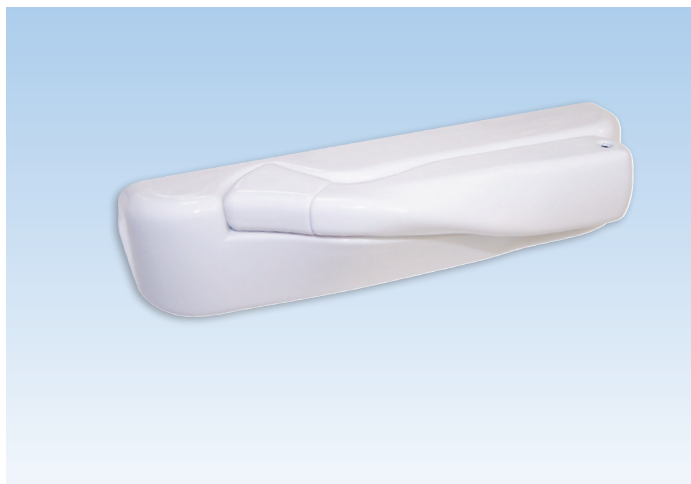
### Track for Scissor Arm Operator

| Description              | Color | PU | Part Number    |
|--------------------------|-------|----|----------------|
| Track with slider guides | SS    | 40 | 6-C2335-01-0-8 |
| PU = Packaging Unit      |       |    |                |

#### Additional information

- Made of stainless steel
- Two slider guides included
- Recommended to use SS screws 9-C9681-00-0-8 or 9-C9686-00-0-8 for installation





### FENIX CLASSIC Removable Cover & Fold-in Handle kit

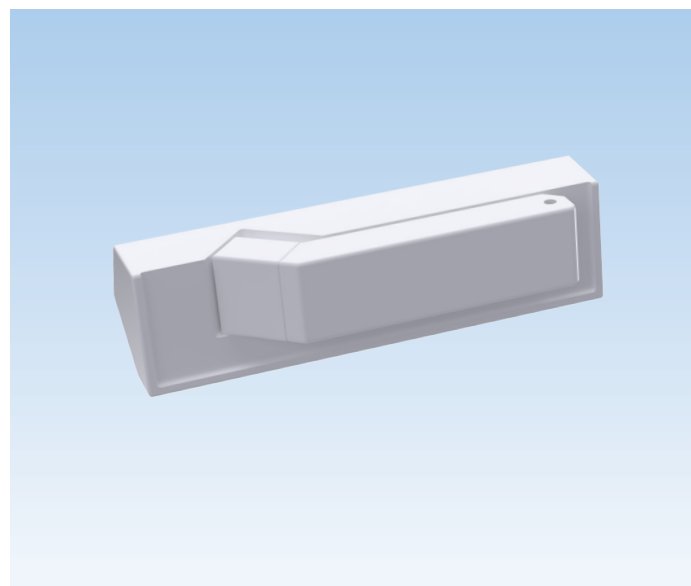
| Description         | PU  | Part Number    |
|---------------------|-----|----------------|
| Kit type A          | 100 | 6-C2345-02-A-* |
| PU = Packaging Unit |     |                |

7 = White, 27 = Blue White, 6 = Black



#### Additional information

- Once the window closed, the handle folds and snaps into the cover



### FENIX EVO Removable Cover & Fold-in Handle kit

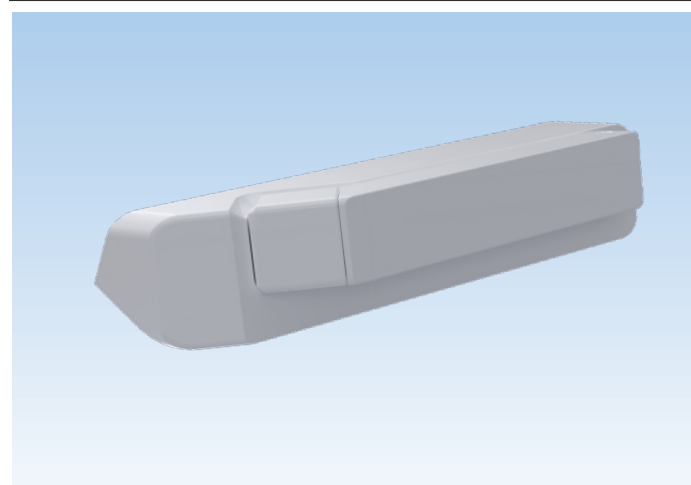
| Description                   | PU | Part Number    |
|-------------------------------|----|----------------|
| Kit type A                    | 10 | 6-C2350-00-A-* |
| * = Color PU = Packaging Unit |    |                |

7 = White, 27 = Blue White, 6 = Black



#### Additional information

- Once the window closed, the handle folds and snaps into the cover



### FENIX EVO 2 Removable Cover & Fold-in Handle kit

| Description                   | PU | Part Number    |
|-------------------------------|----|----------------|
| Kit type A                    | 10 | 6-C2352-00-A-* |
| * = Color PU = Packaging Unit |    |                |

7V = Matte White, 27V = Matte Blue White, 6V = Matte Black



#### Additional information

- Once the window closed, the handle folds and snaps into the cover



### Standard Snap-on 10" & 14" Adjustable Hinges

| Description                  | Color | PU  | Part Number     |
|------------------------------|-------|-----|-----------------|
| <b>Casement hinge arms</b>   |       |     |                 |
| Arms for 10" hinge Type A    | SS    | 100 | 6-C2431-10-A-8B |
| Arms for 10" hinge Type B    | SS    | 100 | 6-C2431-10-B-8B |
| Arms for 14" hinge Type A    | SS    | 100 | 6-C2431-14-A-8B |
| Arms for 14" hinge Type B    | SS    | 100 | 6-C2431-14-B-8B |
| <b>Casement hinge tracks</b> |       |     |                 |
| Track for 10" hinge Type A   | SS    | 100 | 6-C2480-10-A-8B |
| Track for 10" hinge Type B   | SS    | 100 | 6-C2480-10-B-8B |
| Track for 14" hinge Type A   | SS    | 100 | 6-C2480-14-A-8B |
| Track for 14" hinge Type B   | SS    | 100 | 6-C2480-14-B-8B |
| PU = Packaging Unit          |       |     |                 |

#### Additional information

- Stainless steel arms and tracks
- Solid brass adjustable pivot
- Nylon and stainless steel slide
- Stop point 90°
- Nylatron washer between arms
- Certified AAMA
- Adjustable with hexagonal 13mm (1/2") wrench
- Recommended to use SS screws 9-C9681-00-0-8 or 9-C9686-00-0-8 for installation



### Egress Snap-on 10" Adjustable Hinges

| Description                      | Color | PU  | Part Number     |
|----------------------------------|-------|-----|-----------------|
| <b>Casement hinge arms</b>       |       |     |                 |
| Egress Arms for 10" hinge Type A | SS    | 100 | 6-C2425-10-A-8B |
| Egress Arms for 10" hinge Type B | SS    | 100 | 6-C2425-10-B-8B |
| <b>Casement hinge tracks</b>     |       |     |                 |
| Track for 10" hinge Type A       | SS    | 100 | 6-C2480-10-A-8B |
| Track for 10" hinge Type B       | SS    | 100 | 6-C2480-10-B-8B |
| PU = Packaging Unit              |       |     |                 |

#### Additional information

- Same components as the standard hinges
- Recommended to use SS screws 9-C9681-00-0-8 or 9-C9686-00-0-8 for installation



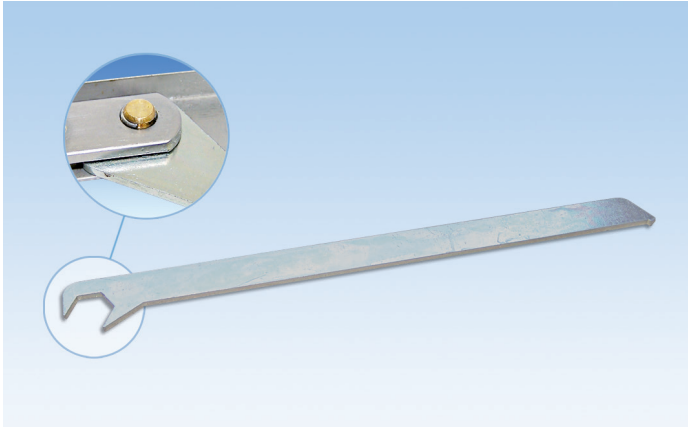
### Awning Fixed Hinges

| Description                 | Color | PU | Part Number     |
|-----------------------------|-------|----|-----------------|
| <b>Awning hinges arms</b>   |       |    |                 |
| Arms for 14" hinge Type A   | SS    | 50 | 6-C2412-14-A-8B |
| Arms for 14" hinge Type B   | SS    | 50 | 6-C2412-14-B-8B |
| Arms for 18" hinge Type A   | SS    | 50 | 6-C2412-18-A-8B |
| Arms for 18" hinge Type B   | SS    | 50 | 6-C2412-18-B-8B |
| Arms for 22" hinge Type A   | SS    | 50 | 6-C2412-22-A-8B |
| Arms for 22" hinge Type B   | SS    | 50 | 6-C2412-22-B-8B |
| Arms for 26" hinge Type A   | SS    | 50 | 6-C2412-26-A-8B |
| Arms for 26" hinge Type B   | SS    | 50 | 6-C2412-26-B-8B |
| <b>Awning hinges tracks</b> |       |    |                 |
| Track for 14" hinge Type A  | SS    | 50 | 6-C2455-14-A-8B |
| Track for 14" hinge Type B  | SS    | 50 | 6-C2455-14-B-8B |
| Track for 18" hinge Type A  | SS    | 50 | 6-C2455-18-A-8B |
| Track for 18" hinge Type B  | SS    | 50 | 6-C2455-18-B-8B |
| Track for 22" hinge Type A  | SS    | 50 | 6-C2455-22-A-8B |
| Track for 22" hinge Type B  | SS    | 50 | 6-C2455-22-B-8B |
| Track for 26" hinge Type A  | SS    | 50 | 6-C2455-26-A-8B |
| Track for 26" hinge Type B  | SS    | 50 | 6-C2455-26-B-8B |

PU = Packaging Unit

### Additional information

- Stainless steel arms and tracks
- Solid brass pivot
- Stainless steel pivot clip
- Nylon and stainless steel slide
- Nylatron washer between arms
- Certified AAMA
- Recommended to use SS screws 9-C9681-00-0-8 or 9-C9686-00-0-8 for installation



### Hexagonal Wrench

| Description         | Color | PU | Part Number    |
|---------------------|-------|----|----------------|
| 13mm (1/2") wrench  | Zinc  | 1  | 9-C2452-20-0-1 |
| PU = Packaging Unit |       |    |                |

### Additional information

- Used to adjust the adjustable hinges

# Locking Handles

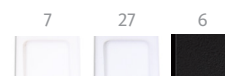
For Multipoints



## FENIX CLASSIC Multipoint Locking Handle

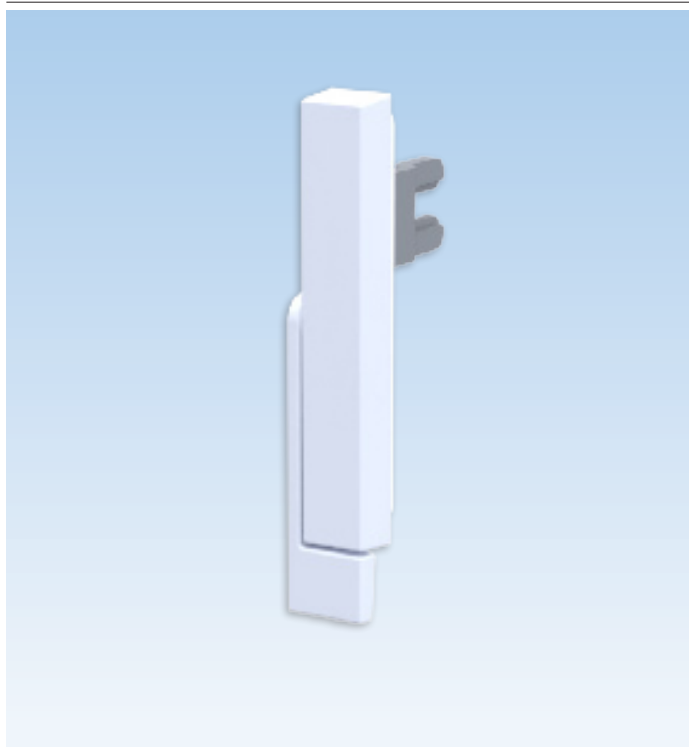
| Description                            | Color      | PU  | Part Number     |
|--|------------|-----|-----------------|
| Locking handle with nylon driving fork | White      | 100 | 6-C7010-35-0-7  |
|  | Blue White | 100 | 6-C7010-35-0-27 |
|  | Black      | 100 | 6-C7010-35-0-6  |

PU = Packaging Unit



### Additional information

- Case and handle made of "Zamak", baked enamel finish
- Reversible left hand or right hand
- 50mm locking travel – 180°
- Use with multipoint locking bars



## FENIX EDGE Multipoint Locking Handle

| Description                            | Color            | PU  | Part Number      |
|--|------------------|-----|------------------|
| Locking handle with Zamak driving fork | Matte White      | 100 | 6-C6440-35-0-7V  |
|  | Matte Blue White | 100 | 6-C6440-35-0-27V |
|  | Matte Black      | 100 | 6-C6440-35-0-6V  |

PU = Packaging Unit

7V = Matte White, 27V = Matte Blue White, 6V = Matte Black



### Additional information

- Case and handle made of "Zamak", baked enamel finish
- Reversible left hand or right hand
- 50mm locking travel – 180°
- Use with multipoint locking bars

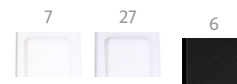
# Locking Handles

## For Multipoints



### FENIX EVO Multipoint Locking Handle

| Description                            | PU | Part Number    |
|--|----|----------------|
| Locking handle with zamak driving fork | 20 | 6-C7030-00-0-* |
| * = Color PU = Packaging Unit          |    |                |
| 7 = White, 27 = Blue White, 6 = Black  |    |                |



#### Additional information

- Case and handle made of "Zamak", baked enamel finish
- Reversible left hand or right hand
- 50mm locking travel – 180°
- Includes one bag of 20 spacer tabs



### FENIX CLASSIC Multipoint Locking Handle

| Description                            | Color      | PU  | Part Number     |
|--|------------|-----|-----------------|
| Locking handle with zamak driving fork | White      | 100 | 6-C6430-35-0-7  |
|  | Blue White | 100 | 6-C6430-35-0-27 |
|  | Black      | 100 | 6-C6430-35-0-6  |
| PU = Packaging Unit                    |            |     |                 |



#### Additional information

- Case and handle made of "Zamak", baked enamel finish
- Reversible left hand or right hand
- 50mm locking travel – 180°
- Use with multipoint locking bars

# Locking Handles

For Singlepoint



### FENIX CLASSIC Single Point Locking Handle

| Description                            | Color      | PU  | Part Number     |
|--|------------|-----|-----------------|
| Locking handle with steel driving fork | White      | 100 | 6-C7011-00-0-7  |
|  | Blue White | 100 | 6-C7011-00-0-27 |

PU = Packaging Unit



#### Additional information

- Case and handle made of "Zamak", baked enamel finish
- Reversible left hand or right hand
- 50mm locking travel – 180°
- Locking reach of 12mm (1/2")
- Use with steel keepers 9-C2440 and 6-C2440



### FENIX CLASSIC Single Point Locking Handle

| Description                            | Color      | PU  | Part Number     |
|--|------------|-----|-----------------|
| Locking handle with opened stop points | White      | 100 | 6-C6470-00-0-37 |
|  | Blue White | 100 | 6-C6470-00-0-07 |

PU = Packaging Unit



#### Additional information

- Nylon housing, "Zamak" lever
- Baked enamel finish
- Use with steel keepers 9-C2440 and 6-C2440

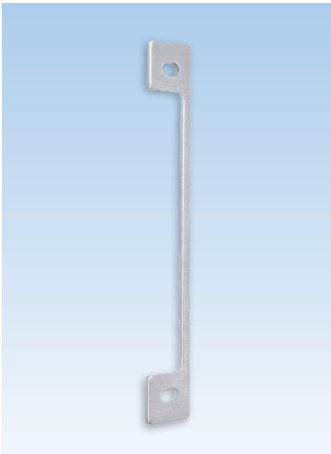


### Wafer Head Screws

| Description         | Color | PU  | Part Number    |
|---------------------|-------|-----|----------------|
| #8 x 1/2" (12mm)    | Zinc  | 200 | 9-C2451-2C-0-1 |
| PU = Packaging Unit |       |     |                |

### Additional information

- #8 zinc plated steel screws
- Phillips socket
- For locking handle installation



### Fixing Bracket

| Description                        | Color    | PU   | Part Number    |
|------------------------------------|----------|------|----------------|
| Fixing bracket for locking handles | Aluminum | 1000 | 9-C2720-04-0-0 |
| PU = Packaging Unit                |          |      |                |

### Additional information

- Made of aluminum
- Use with locking handles when doing a one-step cut-out:  
 6-C6430-35-0-\*  
 6-C7010-35-0-\*  
 6-C7011-00-0-\*  
 6-C6440-35-0\*



# Multipoint Locking Bars

Series 6-C2700 for All Profiles



### Locking Bars with 8mm Cams

| Dim. (mm) | Dim. (in) | Locking Cam | PU | Part Number    |
|-----------|-----------|-------------|----|----------------|
| 180       | 7         | 1           | 50 | 6-C2700-02-0-0 |
| 380       | 15        | 2           | 50 | 6-C2700-04-0-0 |
| 500       | 20        | 2           | 50 | 6-C2700-05-0-0 |
| 600       | 24        | 2           | 50 | 6-C2700-06-0-0 |
| 700       | 28        | 2           | 50 | 6-C2700-07-0-0 |
| 800       | 32        | 2           | 50 | 6-C2700-08-0-0 |
| 900       | 36        | 2           | 50 | 6-C2700-09-0-0 |
| 1000      | 40        | 3           | 50 | 6-C2700-10-0-0 |
| 1100      | 43        | 3           | 50 | 6-C2700-11-0-0 |
| 1200      | 47        | 3           | 50 | 6-C2700-12-0-0 |
| 1300      | 51        | 3           | 50 | 6-C2700-13-0-0 |
| 1400      | 55        | 3           | 50 | 6-C2700-14-0-0 |
| 1500      | 59        | 3           | 50 | 6-C2700-15-0-0 |
| 1600      | 63        | 4           | 50 | 6-C2700-16-0-0 |
| 1700      | 67        | 4           | 50 | 6-C2700-17-0-0 |
| 1800*     | 71        | 4           | 10 | 6-C2700-18-0-0 |
| 1900*     | 75        | 4           | 10 | 6-C2700-19-0-0 |
| 2000*     | 79        | 4           | 10 | 6-C2700-20-0-0 |

\*Only available on special request

PU = Packaging Unit

### Additional information

- Made of stainless steel
- Reinforced nylon glides
- Use with multipoint keepers (Refer to keeper section)
- Use with multipoint locking handles
- Adjustable cams ( $\pm 1$ mm) with Allen key 4mm
- Handle can be installed on first or second cam

02  
1



### Reaching Wedge

| Description         | Color | PU | Part Number      |
|---------------------|-------|----|------------------|
| Half reaching wedge | Black | 1  | 9-C0148-00-A/B-6 |

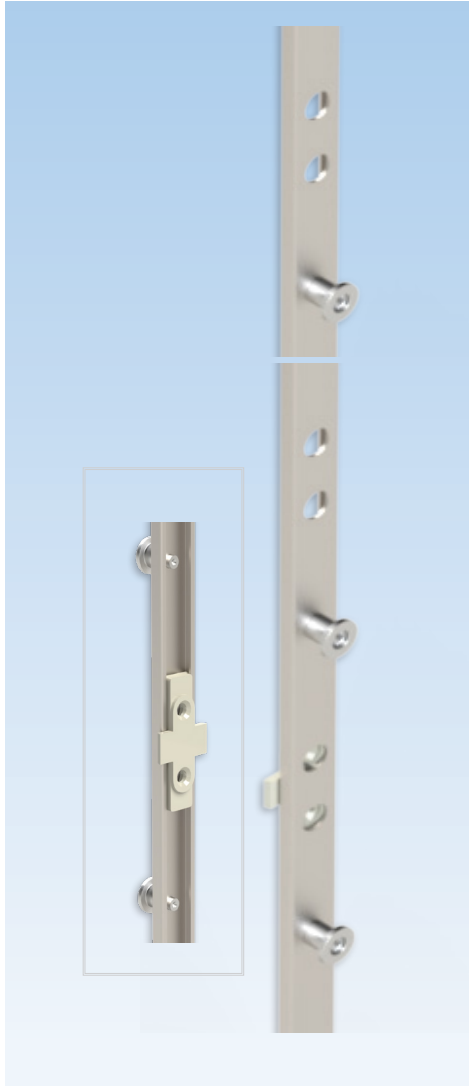
PU = Packaging Unit

### Additional information

- Made of nylon
- Used for multi-point locking bars
- A = used for left hand operator (outside view)  
B = used for right hand operator (outside view)
- Refer to page 4 for handling

# Multipoint Locking Bars

Series 6-C2741 For Thermoplast Profiles Only



## Locking Bars with 8mm Cams

| Dim. (mm) | Dim. (in) | Locking Cam | PU | Part Number    |
|-----------|-----------|-------------|----|----------------|
| 180       | 7         | 1           | 25 | 6-C2741-02-0-0 |
| 380       | 15        | 2           | 25 | 6-C2741-04-0-0 |
| 500       | 20        | 2           | 25 | 6-C2741-05-0-0 |
| 600       | 24        | 2           | 25 | 6-C2741-06-0-0 |
| 700       | 28        | 2           | 25 | 6-C2741-07-0-0 |
| 800       | 32        | 2           | 25 | 6-C2741-08-0-0 |
| 900       | 36        | 2           | 25 | 6-C2741-09-0-0 |
| 1000      | 40        | 3           | 25 | 6-C2741-10-0-0 |
| 1100      | 43        | 3           | 25 | 6-C2741-11-0-0 |
| 1200      | 47        | 3           | 25 | 6-C2741-12-0-0 |
| 1300      | 51        | 3           | 25 | 6-C2741-13-0-0 |
| 1400      | 55        | 3           | 25 | 6-C2741-14-0-0 |
| 1500      | 59        | 3           | 25 | 6-C2700-15-0-0 |
| 1600      | 63        | 4           | 25 | 6-C2741-16-0-0 |
| 1700      | 67        | 4           | 25 | 6-C2741-17-0-0 |
| 1800*     | 71        | 4           | 10 | 6-C2741-18-0-0 |
| 1900*     | 75        | 4           | 10 | 6-C2741-19-0-0 |
| 2000*     | 79        | 4           | 10 | 6-C2741-20-0-0 |

\*Only available on special request

PU = Packaging Unit

### Additional information

- Made of stainless steel
- Reinforced nylon glides for Thermoplast series 4600
- Use with multipoint keeper (9-C2423-T0-0-7)
- Use with multipoint locking handles
- Adjustable cams ( $\pm 1$ mm) with Allen key 4mm
- Handle can be installed on first or second cam

# Multipoint Locking Bars

Series 6-C2715 with additional locking cam



## Locking Bars with 8mm Cams

| Dim. (mm) | Dim. (in) | Locking Cam | PU | Part Number    |
|-----------|-----------|-------------|----|----------------|
| 1200      | 47        | 4           | 50 | 6-C2715-12-0-0 |
| 1300      | 51        | 4           | 50 | 6-C2715-13-0-0 |
| 1400      | 55        | 4           | 50 | 6-C2715-14-0-0 |
| 1500      | 59        | 4           | 50 | 6-C2715-15-0-0 |
| 1600      | 63        | 5           | 50 | 6-C2715-16-0-0 |
| 1700*     | 67        | 5           | 50 | 6-C2715-17-0-0 |
| 1800*     | 71        | 5           | 10 | 6-C2715-18-0-0 |
| 1900*     | 75        | 5           | 10 | 6-C2715-19-0-0 |
| 2000*     | 79        | 5           | 10 | 6-C2715-20-0-0 |

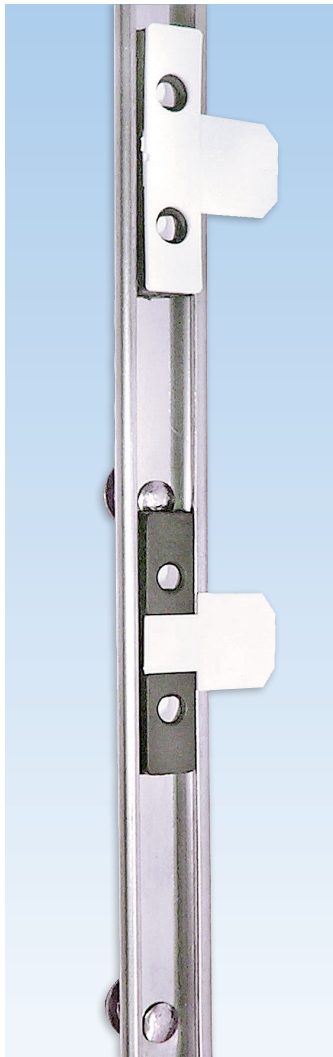
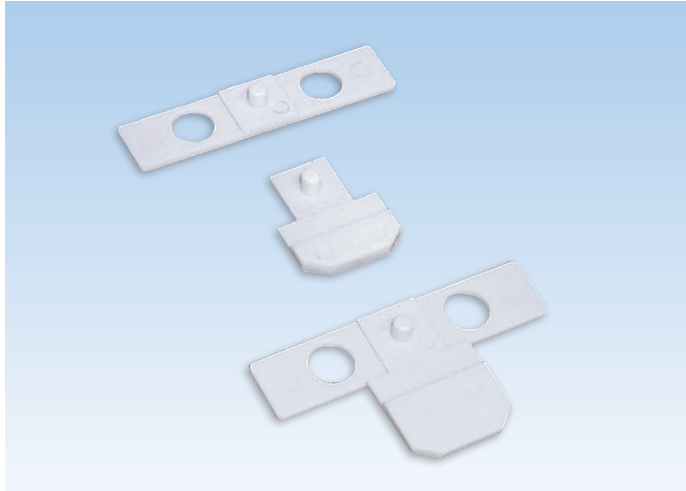
\*Only available on special request      PU = Packaging Unit

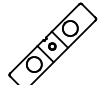
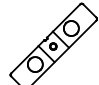

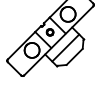
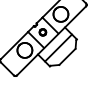





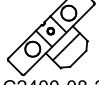

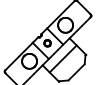
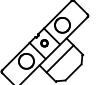







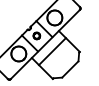
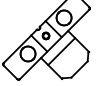






### Additional information

- Made of stainless steel
- Reinforced nylon glides
- Use with multipoint keeper (Refer to keeper section)
- Use with multipoint locking handles
- Adjustable cams ( $\pm 1$ mm) with Allen key 4mm
- Handle can be installed on first or second cam

# Guide Shims

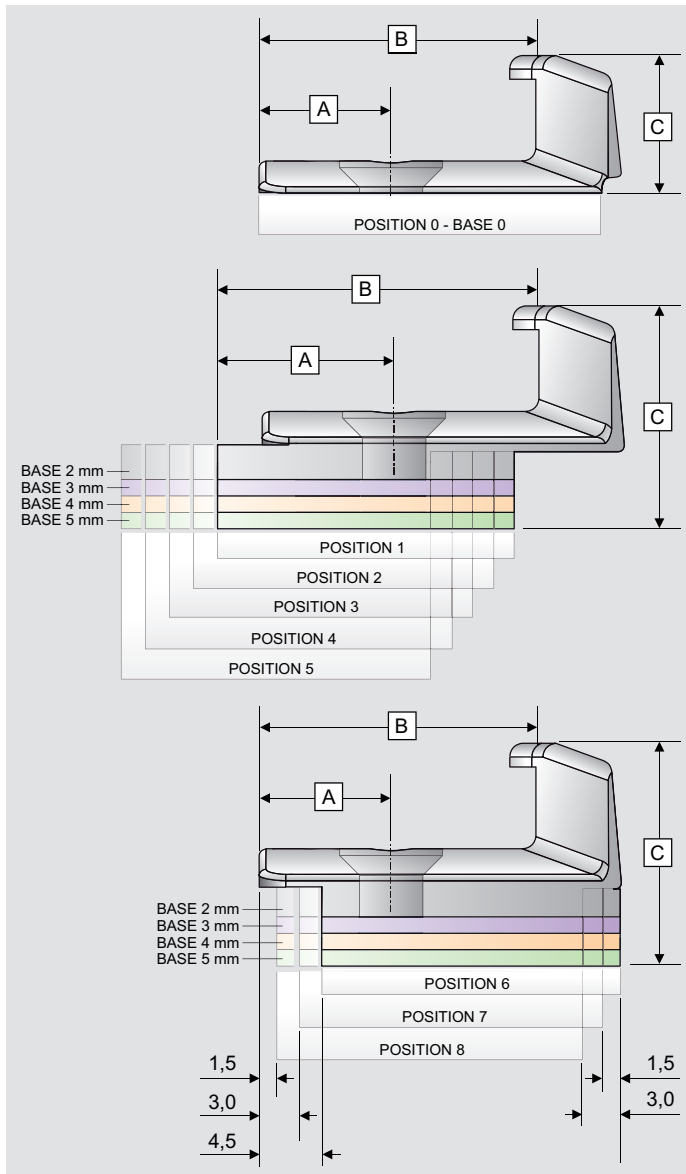
for Multipoint Locking Bars



|                        |  | THICKNESS  |  |   |
|------------------------|--|--|--|---|
|                        |  | 0mm  | 1mm  | 2mm   |
| SPACE FROM EDGE OF BAR | No Guide Shims   |  | 1 - 0<br><br>9-C2400-00-1-7   | 2 - 0<br><br>9-C2400-00-2-7    |
|                        | Guide 6mm Shims  | 0 - 6<br><br>9-C2400-06-0-7   | 1 - 6<br><br>9-C2400-06-1-7   | 2 - 6<br><br>9-C2400-06-2-7    |
|                        | Guide 7mm Shims  | 0 - 7<br><br>9-C2400-07-0-7   | 1 - 7<br><br>9-C2400-07-1-7  | 2 - 7<br><br>9-C2400-07-2-7   |
|                        | Guide 8mm Shims  | 0 - 8<br><br>9-C2400-08-0-7   | 1 - 8<br><br>9-C2400-08-1-7   | 2 - 8<br><br>9-C2400-08-2-7  |
|                        | Guide 9mm Shims  | 0 - 9<br><br>9-C2400-09-0-7   | 1 - 9<br><br>9-C2400-09-1-7   | 2 - 9<br><br>9-C2400-09-2-7  |
|                        | Guide 10mm Shims   | 0 - 10<br><br>9-C2400-10-0-7  | 1 - 10<br><br>9-C2400-10-1-7  | 2 - 10<br><br>9-C2400-10-2-7 |
|                        | Guide 11mm Shims   | 0 - 11<br><br>9-C2400-11-0-7  | 1 - 11<br><br>9-C2400-11-1-7  | 2 - 11<br><br>9-C2400-11-2-7 |
|                        | Guide 12mm Shims   | 0 - 12<br><br>9-C2400-12-0-7  | 1 - 12<br><br>9-C2400-12-1-7  | 2 - 12<br><br>9-C2400-12-2-7 |
|                        | <br> | <br> | <br> |   |

# Keepers

for Multipoint Locking Bars



### Monobloc Keepers

| Base | Pos. | Height (C) mm | Dim. (A) mm | Dim. (B) mm | PU   | Part Number     |
|------|------|---------------|-------------|-------------|------|-----------------|
| 0    | 0    | 11            | 10.0        | 21.0        | 1000 | 9-C2423-00-0-7  |
| 2    | 1    | 13            | 14.0        | 25.0        | 1000 | 9-C2423-21-0-7* |
| 2    | 2    | 13            | 15.5        | 26.5        | 1000 | 9-C2423-22-0-7  |
| 2    | 3    | 13            | 17.0        | 28.0        | 1000 | 9-C2423-23-0-7  |
| 2    | 4    | 13            | 18.5        | 29.5        | 1000 | 9-C2423-24-0-7  |
| 2    | 5    | 13            | 20.0        | 31.0        | 1000 | 9-C2423-25-0-7  |
| 2    | 6    | 13            | 10.0        | 21.0        | 1000 | 9-C2423-26-0-7  |
| 2    | 7    | 13            | 10.0        | 21.0        | 1000 | 9-C2423-27-0-7  |
| 2    | 8    | 13            | 10.0        | 21.0        | 1000 | 9-C2423-28-0-7  |
| 3    | 1    | 14            | 14.0        | 25.0        | 1000 | 9-C2423-31-0-7* |
| 3    | 2    | 14            | 15.5        | 26.5        | 1000 | 9-C2423-32-0-7  |
| 3    | 3    | 14            | 17.0        | 28.0        | 1000 | 9-C2423-33-0-7  |
| 3    | 4    | 14            | 18.5        | 29.5        | 1000 | 9-C2423-34-0-7  |
| 3    | 5    | 14            | 20.0        | 31.0        | 1000 | 9-C2423-35-0-7  |
| 3    | 6    | 14            | 10.0        | 21.0        | 1000 | 9-C2423-36-0-7  |
| 3    | 7    | 14            | 10.0        | 21.0        | 1000 | 9-C2423-37-0-7  |
| 3    | 8    | 14            | 10.0        | 21.0        | 1000 | 9-C2423-38-0-7  |
| 4    | 1    | 15            | 14.0        | 25.0        | 1000 | 9-C2423-41-0-7  |
| 4    | 2    | 15            | 15.5        | 26.5        | 1000 | 9-C2423-42-0-7* |
| 4    | 3    | 15            | 17.0        | 28.0        | 1000 | 9-C2423-43-0-7  |
| 4    | 4    | 15            | 18.5        | 29.5        | 1000 | 9-C2423-44-0-7  |
| 4    | 5    | 15            | 20.0        | 31.0        | 1000 | 9-C2423-45-0-7  |
| 4    | 6    | 15            | 10.0        | 21.0        | 1000 | 9-C2423-46-0-7  |
| 4    | 7    | 15            | 10.0        | 21.0        | 1000 | 9-C2423-47-0-7  |
| 4    | 8    | 15            | 10.0        | 21.0        | 1000 | 9-C2423-48-0-7  |
| 5    | 3    | 16            | 17.0        | 28.0        | 1000 | 9-C2423-53-0-7  |

PU = Packaging Unit

### Additional information

- Monobloc keeper
- Made of nylon
- Used for multipoint locking bars
- Can suit various profile systems

\* Also available in black (-6).

Other references available on demand

# Keepers

for Multipoint Locking Bars

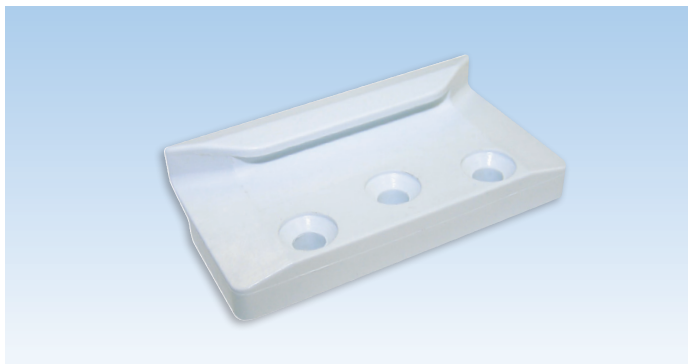


### Keeper

| Description         | Height (mm) | Color | PU   | Part Number    |
|---------------------|-------------|-------|------|----------------|
| Keeper              | 9.5         | White | 1000 | 9-C2311-00-0-0 |
| PU = Packaging Unit |             |       |      |                |

### Additional information

- Made of nylon
- Used for multipoint locking bars

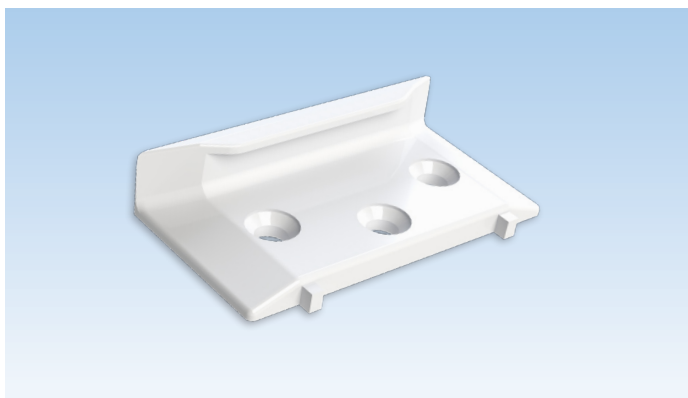


### Monobloc Keepers

| Description          | Height mm | Color | PU   | Part Number      |
|----------------------|-----------|-------|------|------------------|
| Keeper with base 0mm | 8         | White | 1000 | 9-C2420-00-0-7 A |
| Keeper with base 2mm | 10        | White | 1000 | 9-C2420-02-0-7 A |
| Keeper with base 4mm | 12        | White | 1000 | 9-C2420-04-0-7 A |
| PU = Packaging Unit  |           |       |      |                  |

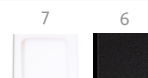
### Additional information

- Monobloc keeper
- Made of nylon
- Used for multipoint locking bars
- Can suit various profile systems



### Monobloc Keepers for Thermoplast profiles

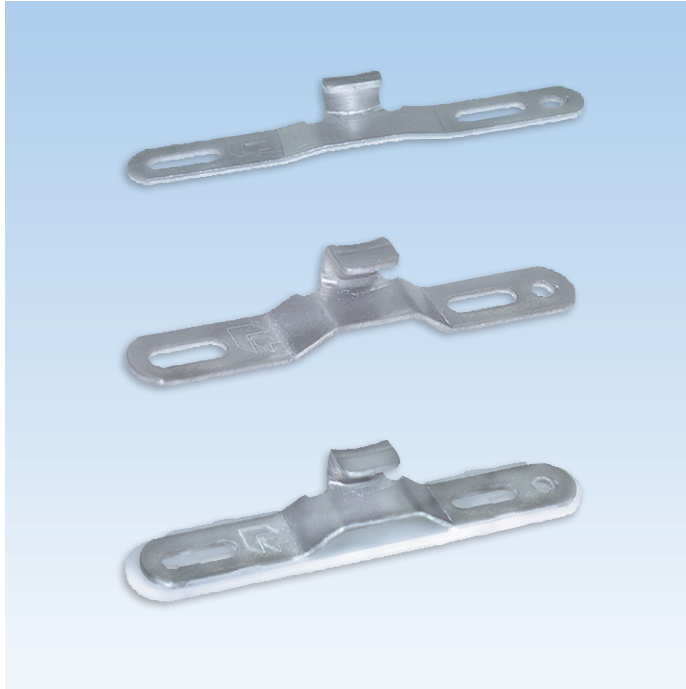
| Base                 | Pos. | Height (C) mm | Dim. (A) mm | Dim. (B) mm | PU                  | Part Number    |
|----------------------|------|---------------|-------------|-------------|---------------------|----------------|
| 0                    | 0    | 13            | 14.0        | 25.5        | 1000                | 9-C2423-T0-0-* |
| *=Colors             |      |               |             |             | PU = Packaging Unit |                |
| 7 = White, 6 = Black |      |               |             |             |                     |                |



### Additional information

- Monobloc keeper for Thermoplast series 4600
- Made of nylon
- Used for multipoint locking bars (6-C2741-XX-0-0)

# Single Point Keepers



## Single Point Keepers

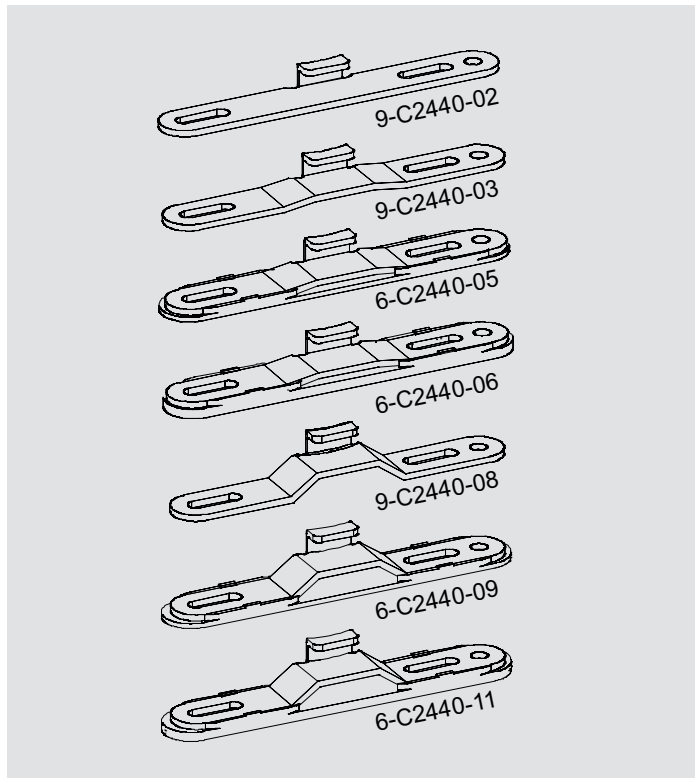
| Description            | Height mm | PU  | Part Number    |
|------------------------|-----------|-----|----------------|
| Keeper                 | 2         | 100 | 9-C2440-02-0-8 |
| Keeper                 | 3.5       | 100 | 9-C2440-03-0-1 |
| Keeper with nylon shim | 5         | 100 | 6-C2440-05-0-1 |
| Keeper with nylon shim | 6.5       | 100 | 6-C2440-06-0-1 |
| Keeper                 | 8         | 100 | 9-C2440-08-0-1 |
| Keeper with nylon shim | 9.5       | 100 | 6-C2440-09-0-1 |
| Keeper with nylon shim | 11        | 100 | 6-C2440-11-0-1 |

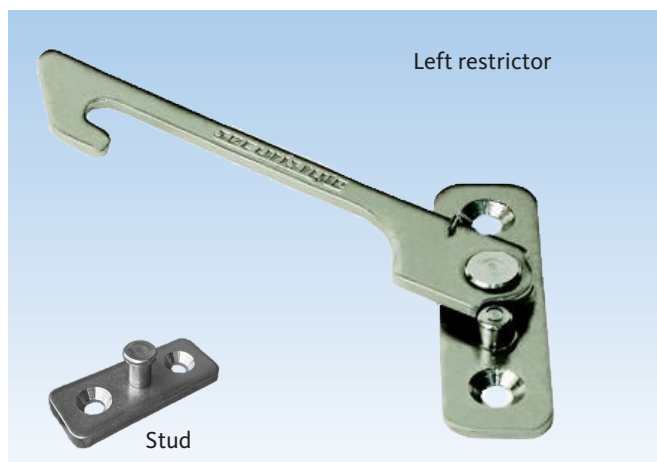
PU = Packaging Unit

### Additional information

- Made of steel plated FerGUard
- Vertical adjustment 12mm
- Anti-slip fixing hole
- Use with locking handles 6-C7011-00-0-\* and 6-C6470-00-0-\*

02  
1





### Restrictors

| Description                  | Color | PU | Part Number       |
|------------------------------|-------|----|-------------------|
| 66mm opening gap restrictor  | SS    | 25 | 6-C8659-00-L/R-8B |
| 116mm opening gap restrictor | SS    | 25 | 6-C8660-00-L/R-8B |
| Stud 13mm / 16mm             | SS    | 25 | 6-C8658-XX-0-8B   |
| PU = Packaging Unit          |       |    |                   |

### Additional information

- Made of 304 Stainless steel
- Easy to fit with no routing
- Compatible with standard duty hinges
- Enhanced corrosion resistance
- Must purchase one restrictor and one stud separately
- Recommended to use of SS screws 9-C9681-00-0-8 or 9-C9686-00-0-8 for installation



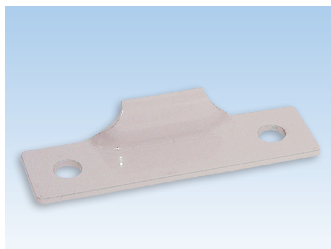


### Adjustable Snubber

| Description         | Color | PU  | Part Number    |
|---------------------|-------|-----|----------------|
| Set of snubber      | Zinc  | 500 | 6-C9207-00-0-1 |
| PU = Packaging Unit |       |     |                |

#### Additional information

- Made of steel
- Installs in the hinge cavity
- Used with E-12562 flat head screws
- Adjustable for compression
- Recommended to use of SS screws 9-C9681-00-0-8 or 9-C9686-00-0-8 for installation



### Snubber

| Description         | Color | PU  | Part Number    |
|---------------------|-------|-----|----------------|
| Snubber             | Tan   | 500 | 9-C9202-09-0-2 |
|                     | SS    | 500 | 9-C9202-09-0-8 |
| PU = Packaging Unit |       |     |                |

#### Additional information

- Made of painted steel or stainless steel
- Installs in the hinge cavity
- Used with E-12562 flat head screws
- 2 pieces are required for the assembly

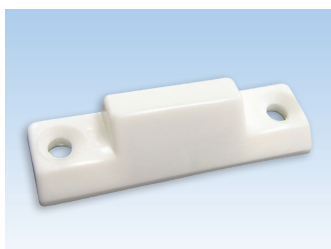


### Snubber (exterior)

| Description         | Color | PU  | Part Number    |
|---------------------|-------|-----|----------------|
| Snubber             | White | 500 | 9-C2723-00-0-7 |
| PU = Packaging Unit |       |     |                |

#### Additional information

- Made of painted steel
- Installs from exterior or in the hinge cavity
- Used with E-12562 flat head screws
- 2 pieces are required for the assembly (option 2)



### Wedge

| Description         | Color | PU  | Part Number    |
|---------------------|-------|-----|----------------|
| 10mm run-up block   | White | 100 | 9-C3279-10-0-7 |
| PU = Packaging Unit |       |     |                |

#### Additional information

- Made of nylon



#### Screws for Hardware Fixing

| Description | Dimension mm | Color | PU   | Part Number    |
|-------------|--------------|-------|------|----------------|
| D1 screws   | 4.2 x 13     | Zinc  | 1000 | E-12562-13-0-1 |
| D1 screws   | 4.2 x 16     | Zinc  | 1000 | E-12562-16-0-1 |
| D1 screws   | 4.2 x 20     | Zinc  | 1000 | E-12562-20-0-1 |
| D1 screws   | 4.2 x 22     | Zinc  | 1000 | E-12562-22-0-1 |
| D1 screws   | 4.2 x 25     | Zinc  | 1000 | E-12562-25-0-1 |
| D1 screws   | 4.2 x 30     | Zinc  | 1000 | E-12562-30-0-1 |
| D1 screws   | 4.2 x 35     | Zinc  | 1000 | E-12562-35-0-1 |
| D1 screws   | 4.2 x 40     | Zinc  | 1000 | E-12562-40-0-1 |

PU = Packaging Unit

#### Additional information

- Type D1 with self-drilling spiral point and high duplex thread
- Used for fastening fittings into semi-hard PVC at high speed
- Phillips socket



#### “No Corrode” Screws for Hardware Fixing

| Description | Dimension mm | Color | PU   | Part Number    |
|-------------|--------------|-------|------|----------------|
| D1 screws   | 4.2 x 13     | Zinc  | 5000 | 9-C9911-5M-0-1 |
| D1 screws   | 4.2 x 16     | Zinc  | 5000 | 9-C9912-5M-0-1 |
| D1 screws   | 4.2 x 20     | Zinc  | 5000 | 9-C9914-5M-0-1 |
| D1 screws   | 4.2 x 25     | Zinc  | 5000 | 9-C9916-5M-0-1 |

\* = Color      PU = Packaging Unit

#### Additional information

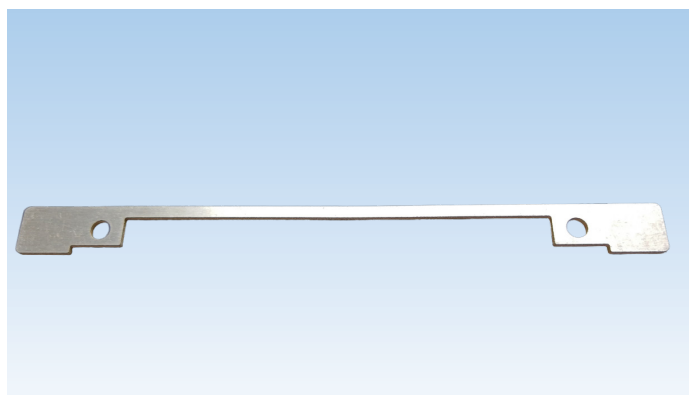
- Type D1 with self-drilling spiral point and high duplex thread
- Used for fastening fittings into semi-hard PVC at high speed
- Robertsons socket



| SS Screws           |       |        |                |
|---------------------|-------|--------|----------------|
| Description         | Color | PU     | Part Number    |
| #10 x 5/8" (16mm)   | SS    | 10 000 | 9-C9681-00-0-8 |
| #10 x 1/2" (13mm)   | SS    | 10 000 | 9-C9686-00-0-8 |
| PU = Packaging Unit |       |        |                |

### Additional information

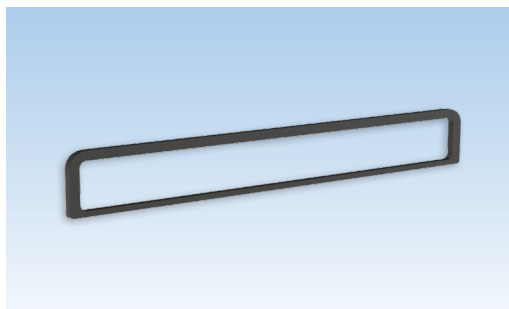
- Stainless steel screws
- Undercut #7 head with "Quadrex" socket
- Sharp tip for quick drive
- Slim head for more clearance
- Special thread design for thin wall profile
- For dual track, awning track, hinge arm, hinge track, surface bracket, 90° bracket, restrictor and adjustable snubber installation



| Fixing bracket              |          |    |                |
|-----------------------------|----------|----|----------------|
| Description                 | Color    | PU | Part Number    |
| Fixing bracket for Operator | Aluminum | 1  | 9-C2341-00-0-1 |
| PU = Packaging Unit         |          |    |                |

### Additional information

- Made of aluminum
- Used to increase the Operator stability
- Use with Operator for casement and awning windows:  
Dyad operator 6-C2332-\*\*-L/R-8  
Dual Arm operator 6-C2331-\*\*-L/R-8  
Scissor Arm 6-C2340-00-0-8
- Use self-tapping No 8 - 5/8" screws, non-countersunk



### Adhesive gasket

| Description                 | Color | PU | Part Number    |
|-----------------------------|-------|----|----------------|
| Operator Replacement Gasket | Black | 1  | 9-C0964-01-0-6 |
| Operator Replacement Gasket | White | 1  | 9-C0964-01-0-7 |

PU = Packaging Unit

### Additional information

- Made of EVA foam



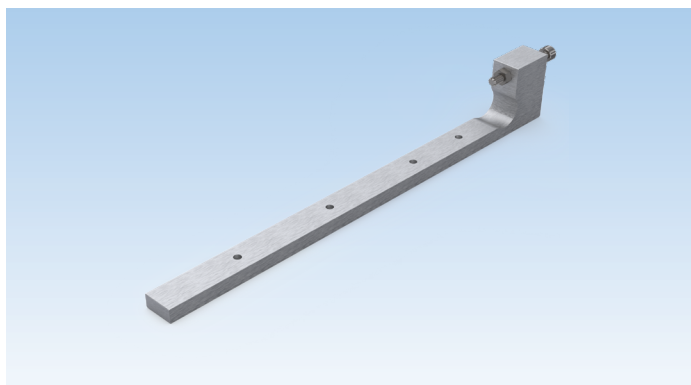
### Spacer tab

| Description | Color | PU | Part Number    |
|-------------|-------|----|----------------|
| Spacer tab  | Black | 1  | 9-C0958-00-0-0 |

PU = Packaging Unit

### Additional information

- Made of ABS
- Use with locking handle FENIX EVO 6-C7030-00-0-\*



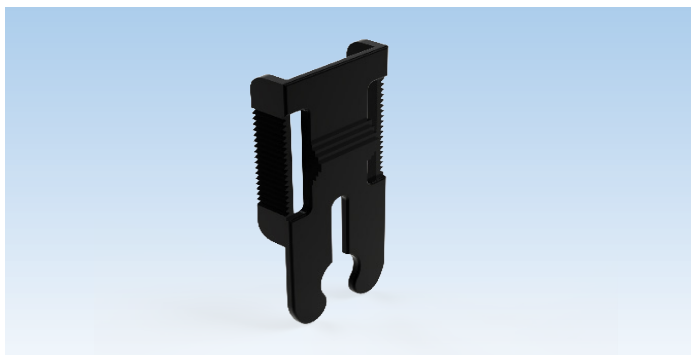
### Casement Hinges Jig

| Description         | PU | Part Number    |
|---------------------|----|----------------|
| Casement hinges jig | 1  | 6-C9250-00-0-1 |

PU = Packaging Unit

### Additional information

- Use for casement hinge arms pilot holes on sash
- Includes adjustment screw and nut
- Made of Aluminum



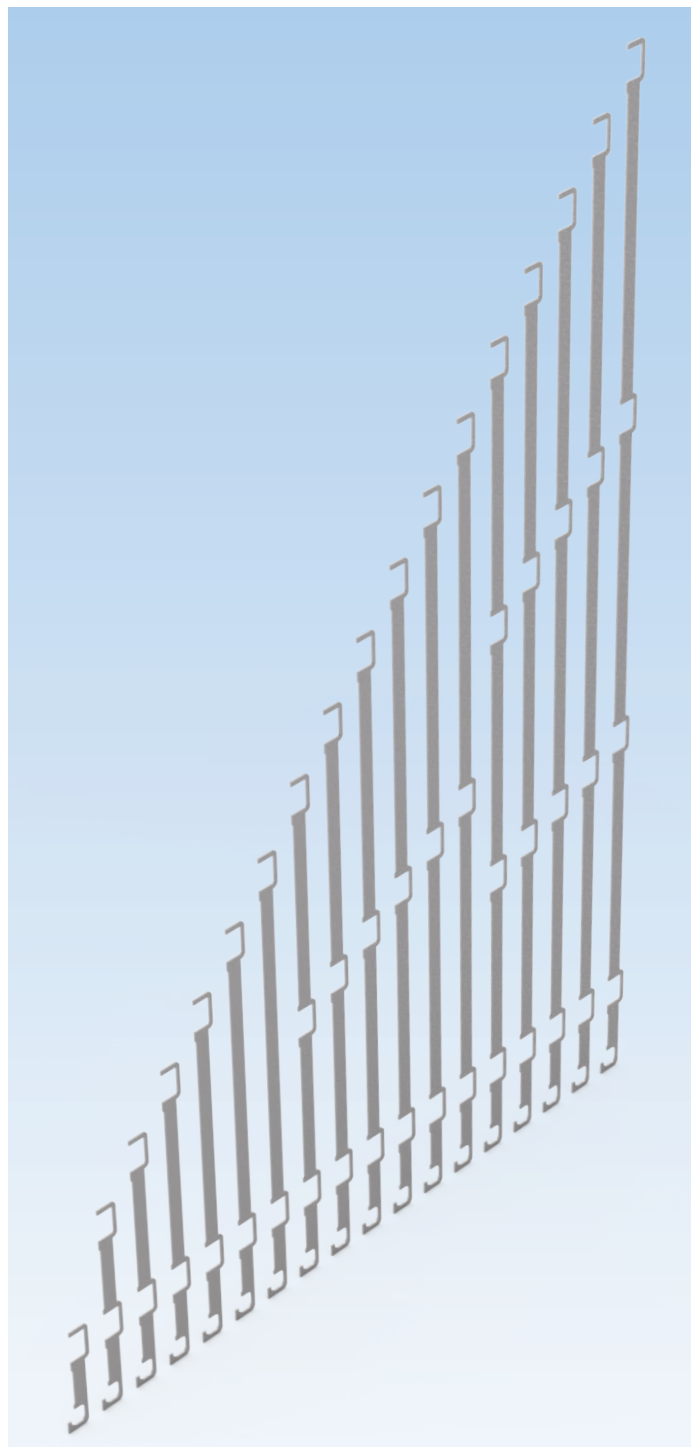
### Replacement Clip

| Description      | PU | Part Number    |
|------------------|----|----------------|
| Replacement Clip | 1  | 9-C2339-00-0-6 |

PU = Packaging Unit

### Additional information

- Clip for Scissor arm operator



### Keepers Jig

| Description         | PU | Part Number    |
|---------------------|----|----------------|
| Keepers jig kit     | 1  | K-C9252-22-0-1 |
| PU = Packaging Unit |    |                |

### Additional information

- Use with multipoint locking bars and keepers
- Sold as a kit (for 180mm-2000mm locking bars)
- Made of galvanized steel
- Jig kits are prepared for a specific profile and components
- When ordering, please add a note with the profile model and list of references



### Fenix samples kit

| Description  | PU | Part Number       |
|--|----|-------------------|
| Fenix samples kit                                    | 1  | K-C0230-00-0-0    |
| PU = Packaging Unit                                  |    |                   |
| Additional information                               |    |                   |
| Kit breakdown  |    | Part Number       |
| Dual Arm Operator                                    | 1  | 6-C2331-00-L-8    |
| Dual Arm Operator short arm                          | 1  | 6-C2331-MC-L-8    |
| Track for Dual Arm Operator                          | 1  | 6-C2336-00-0-8    |
| Dyad Operator  | 1  | 6-C2332-00-R-8    |
| Dyad Operator short arm                              | 1  | 6-C2332-MC-R-8    |
| Scissor Arm Operator                                 | 1  | 6-C2340-00-0-8    |
| Track for Scissor Arm Operator                       | 1  | 6-C2335-01-0-8    |
| 90° Bracket  | 1  | 6-C2320-00-0-8    |
| Surface mounted Bracket                              | 1  | 6-C2307-00-L/R-8B |
| FENIX CLASSIC Removable Cover & Fold-in Handle kit   | 1  | 6-C2345-02-A-27   |
| FENIX CLASSIC Removable Cover & Fold-in Handle kit   | 1  | 6-C2345-02-B-7    |
| FENIX EVO2 Removable Cover & Fold-in Handle kit      | 1  | 6-C2352-00-A-27   |
| FENIX EVO2 Removable Cover & Fold-in Handle kit      | 1  | 6-C2352-00-B-7    |
| FENIX EVO2 Removable Cover & Fold-in Handle kit      | 1  | 6-C2352-00-A-6V   |
| Casement hinge arm 10"                               | 1  | 6-C2431-10-A-8B   |
| Casement hinge arm 10"                               | 1  | 6-C2431-10-B-8B   |
| Track for 10" hinge                                  | 1  | 6-C2480-10-A-8B   |
| Track for 10" hinge                                  | 1  | 6-C2480-10-B-8B   |
| Fenix Classic Locking handle with nylon driving fork | 1  | 6-C7010-35-0-27   |
| Fenix Classic Locking handle with nylon driving fork | 1  | 6-C7010-35-0-7    |
| Fenix Classic Locking handle with zamak driving fork | 1  | 6-C7030-00-0-27   |
| Fenix Classic Locking handle with zamak driving fork | 1  | 6-C7030-00-0-7    |
| Fenix Edge Locking handle with Zamac driving fork    | 1  | 6-C6440-35-0-7V   |
| Fenix Edge Locking handle with Zamac driving fork    | 1  | 6-C6440-35-0-27V  |
| Fenix Edge Locking handle with Zamac driving fork    | 1  | 6-C6440-35-0-6V   |
| Locking Bars with 8mm Cams                           | 1  | 6-C2700-04-0-0    |
| Reaching Wedge                                       | 1  | 9-C0148-00-A-6    |
| Monobloc Keeper - White                              | 1  | 9-C2423-T0-0-7    |
| Monobloc Keeper - Black                              | 1  | 9-C2423-T0-0-6    |
| Adjustable Snubber                                   | 1  | 6-C9207-00-0-1    |
| Fixing bracket for locking handles                   | 1  | 9-C2720-04-0-0    |
| Fixing bracket for operator                          | 1  | 9-C2341-00-0-1    |
| Qty = Quantity                                       |    |                   |



WINDOW TECHNOLOGY  
DOOR TECHNOLOGY  
AUTOMATIC ENTRANCE SYSTEMS  
BUILDING MANAGEMENT SYSTEMS

HEAD OFFICE  
Ferco Architectural Hardware Inc.  
2000, Berlier St.  
Laval, QC H7L 4S4  
Tel.: 450 973-1437  
1 800 355-8810  
Fax: 450 973-7661  
ferco@ferco.ca

ONTARIO / WESTERN PROVINCES  
Tel.: 905 282-9588  
1 800 668-5310  
Fax: 905 282-9915

UNITED STATES  
Tel.: 1 800 927-1097  
Fax: 1 888 454-0161

[www.ferco.ca](http://www.ferco.ca)

Edition 05.2022 | Printed in Canada

02  
1

Securing technology for you

