



WINDOW TECHNOLOGY
DOOR TECHNOLOGY
AUTOMATIC ENTRANCE SYSTEMS
BUILDING MANAGEMENT SYSTEMS



TECHNICAL DOCUMENTATION | SECTION 03.3



GU-SECURY Automatic Door Lock & Gripset Handle



Securing technology for you





03T.3

SECURY AUTOMATIC DOOR LOCK & GRIPSET HANDLE

SECURY Automatic 60mm x 1590mm	03T.3.3
SECURY Automatic 60mm x 1900mm.....	03T.3.4
Extension for 10' door.....	03T.3.5
SALEM Gripset Handle Dimensions.....	03T.3.6
BERKELEY Gripset Handle Dimensions.....	03T.3.7
Gripset Handle Cutout	03T.3.8
Keepers	03T.3.9
Accessories	03T.3.10

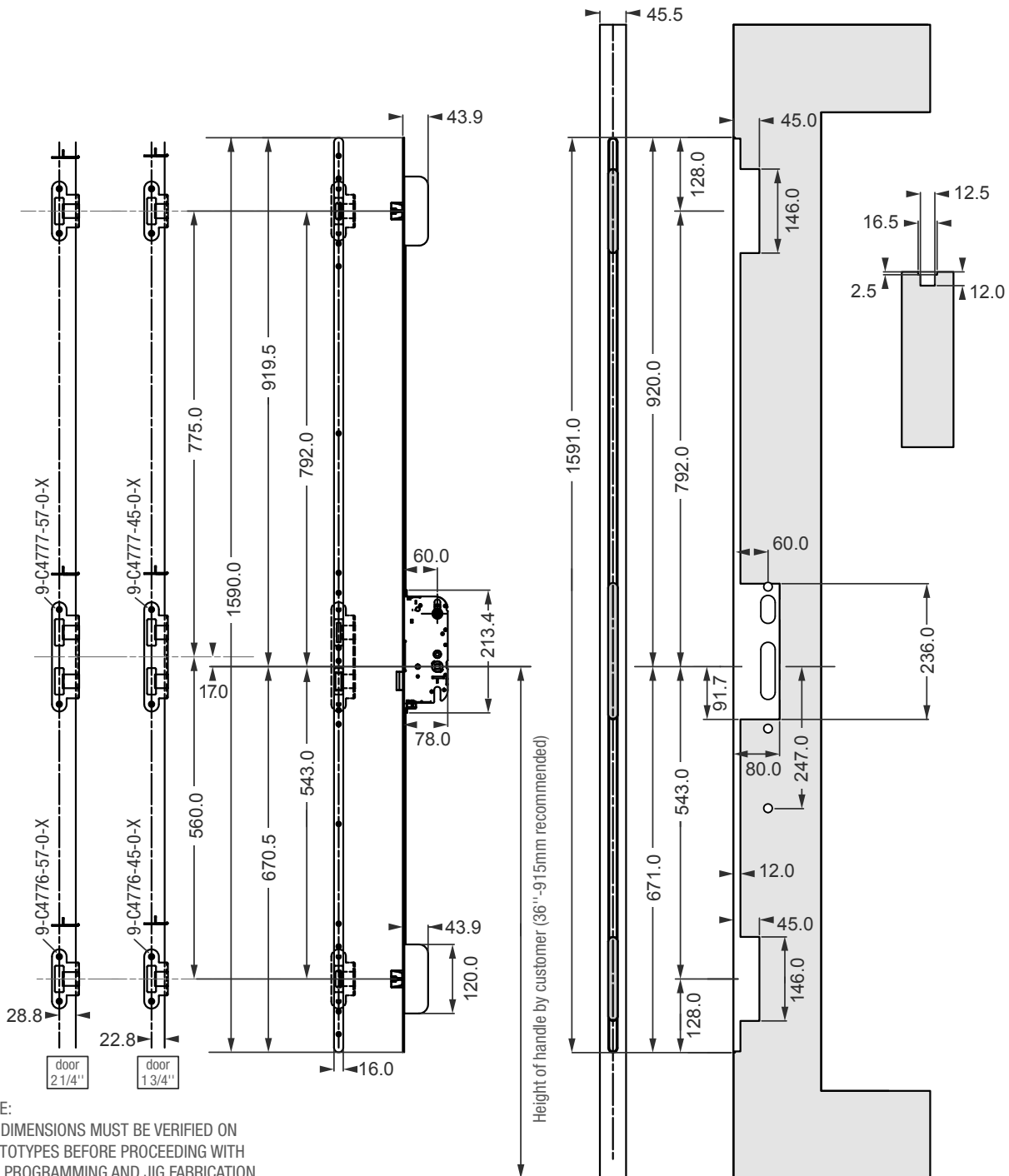
Door Multi-point Locking System

SECURY Automatic Door Lock for Gripset



SECURY Automatic (60mm x 1590mm)

Description	Part Number
6' 8" door with 60mm backset	6-35185-01-R-8B



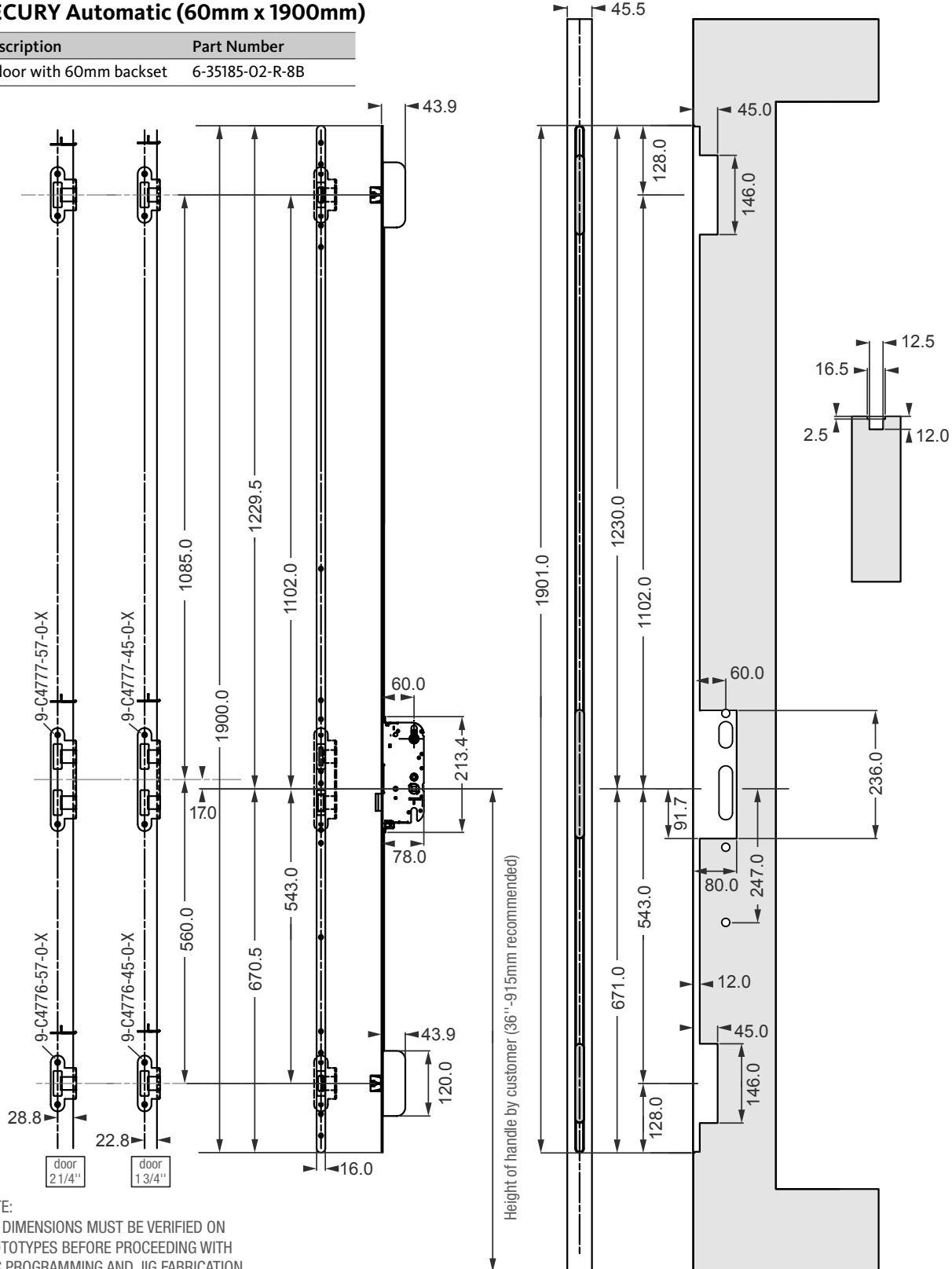
Door Multi-point Locking System

SECURY Automatic Door Lock for Gripset



SECURY Automatic (60mm x 1900mm)

Description	Part Number
8' door with 60mm backset	6-35185-02-R-8B



NOTE:
ALL DIMENSIONS MUST BE VERIFIED ON
PROTOTYPES BEFORE PROCEEDING WITH
CNC PROGRAMMING AND JIG FABRICATION.

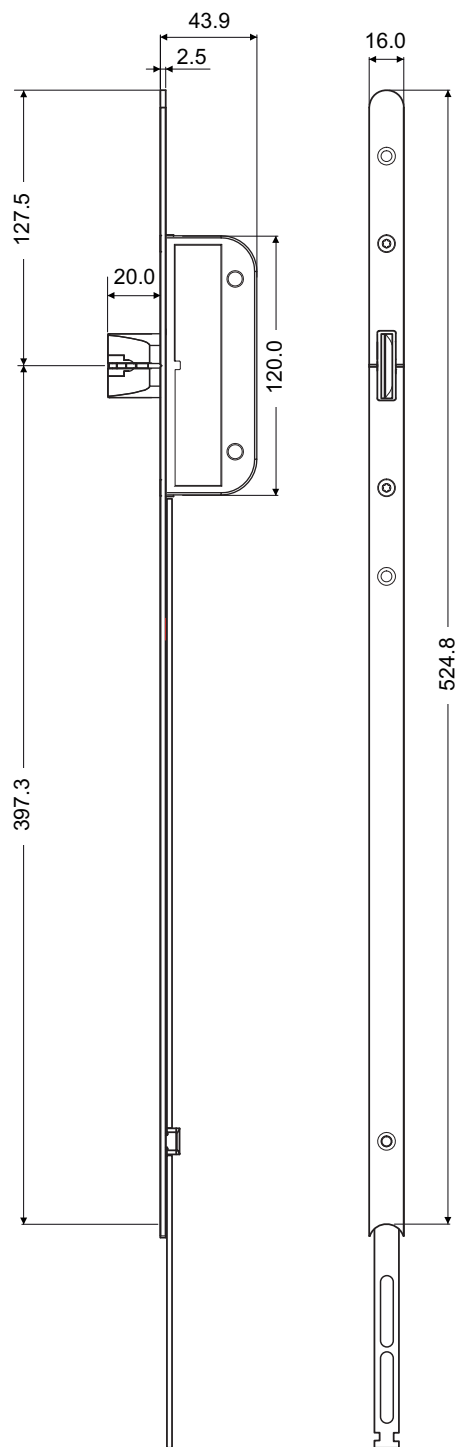
Door Multi-point Locking System

Extensions for SECURY Automatic Door Lock



Extension with Automatic Lock Point

Description	Part Number
Extension for 10' door	6-33479-04-0-8B



NOTE: To be used with SECURY Automatic Eurocylinder Door Locks

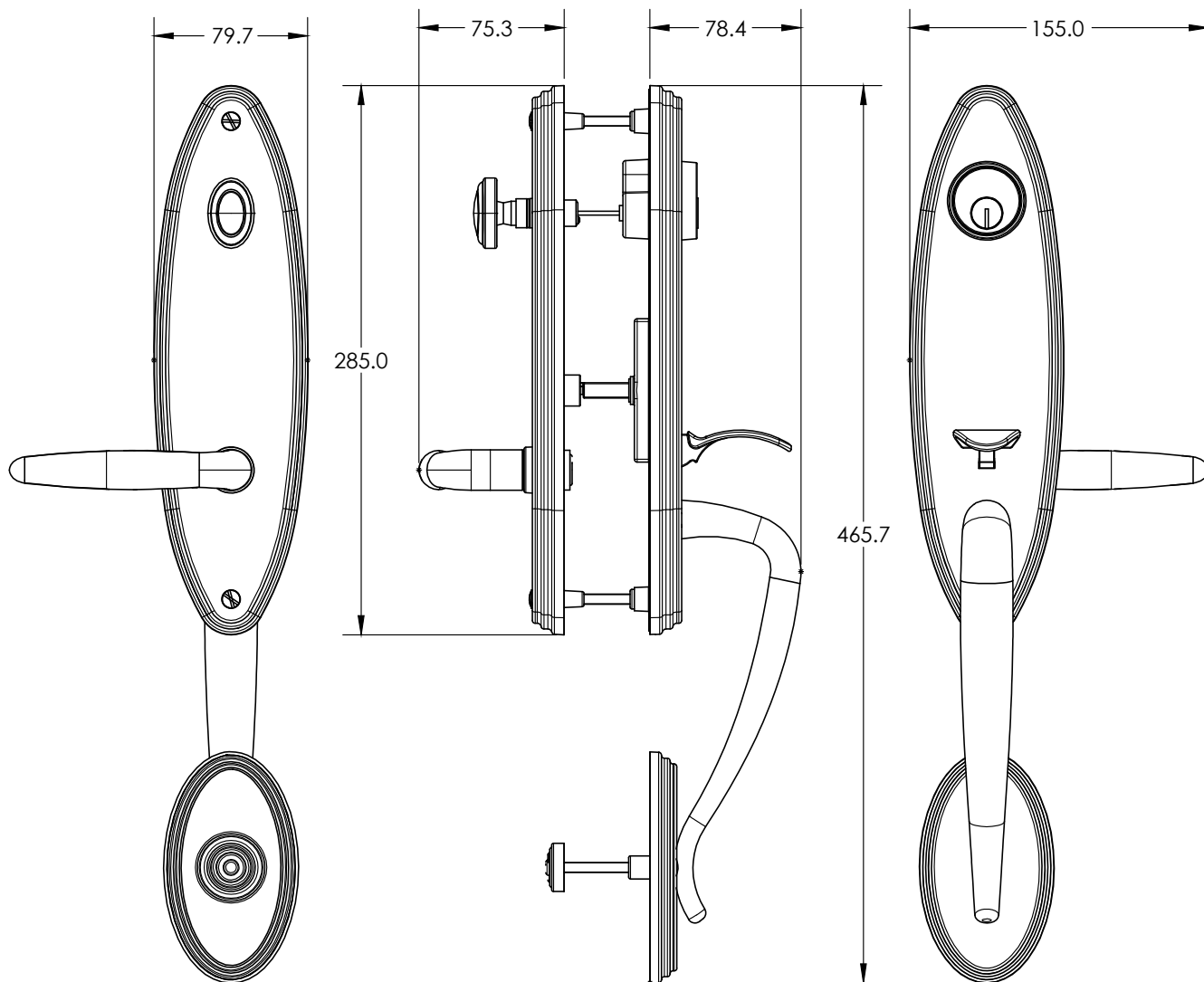
Door Multi-point Locking System

SALEM Gripset Handle Dimensions



SALEM

Description	Part Number
Gripset handle	K-C2060-00-0-*



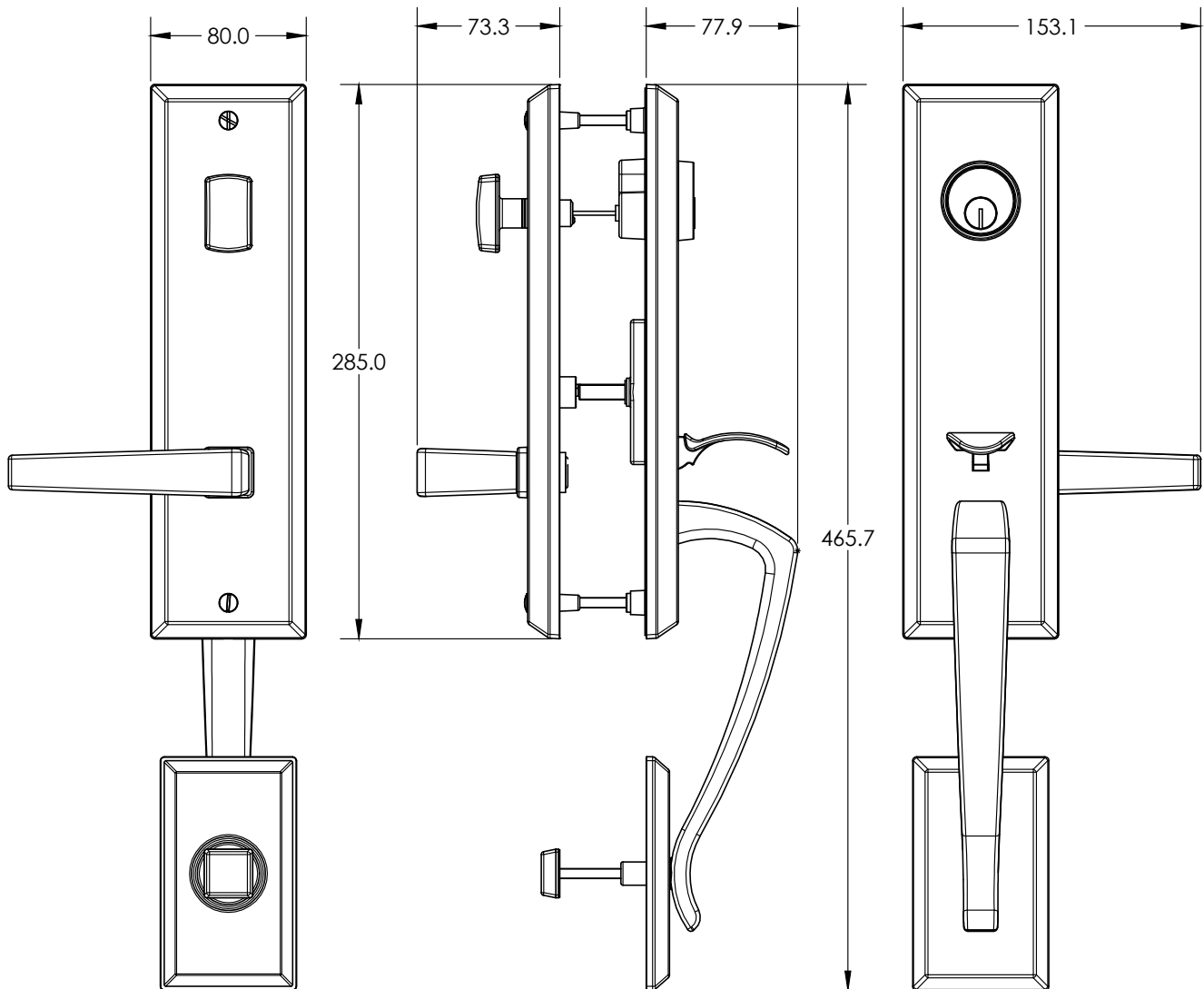
Door Multi-point Locking System

BERKELEY Gripset Handle Dimensions



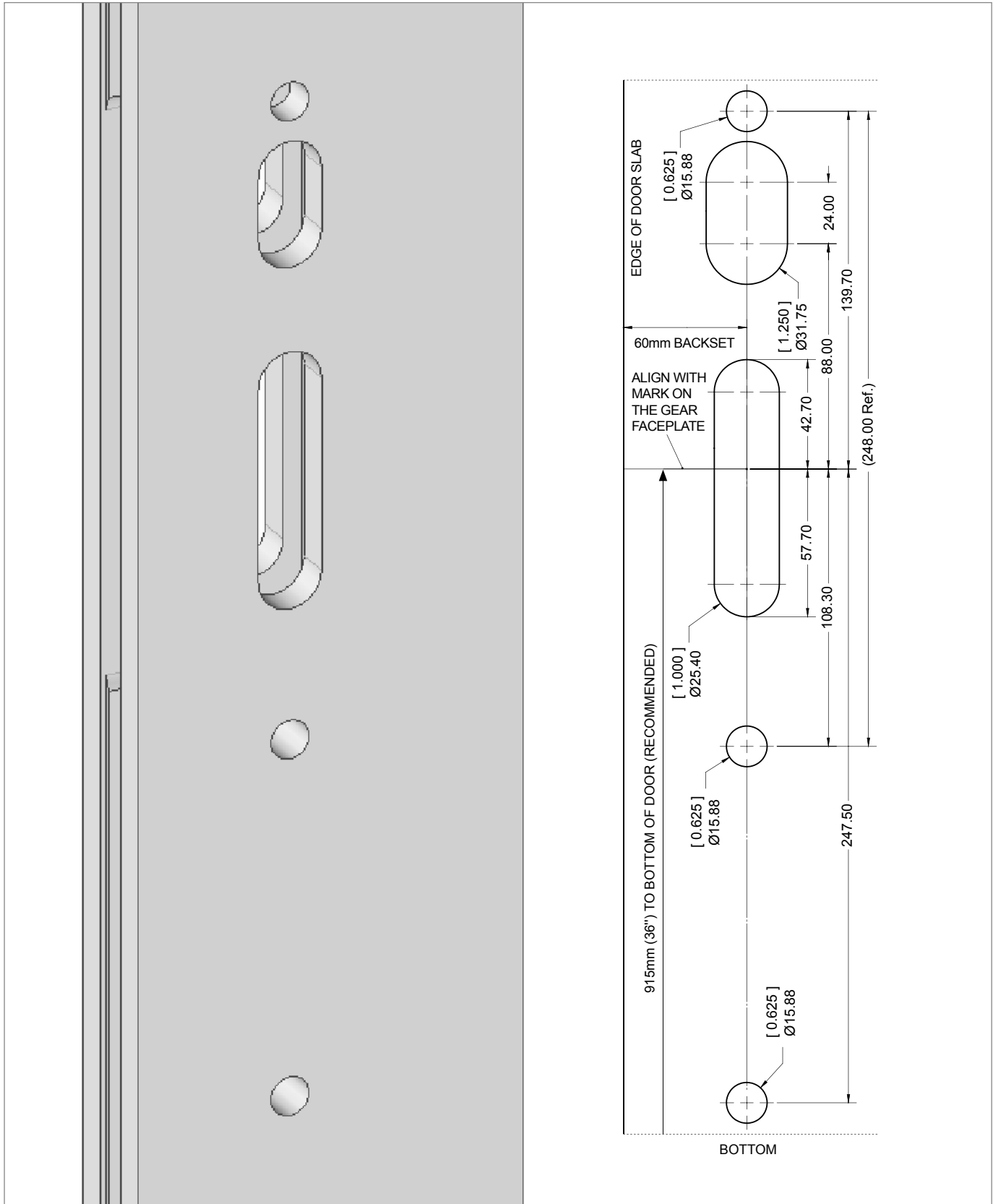
BERKELEY

Description	Part Number
Gripset handle	K-C2070-00-0*



Door Multi-point Locking System

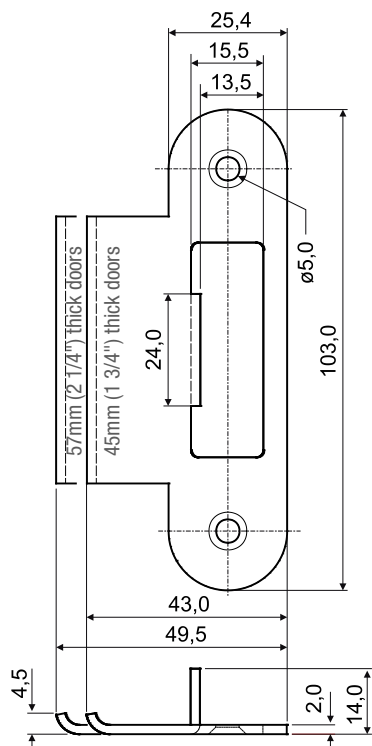
Gripset Handle Cutout





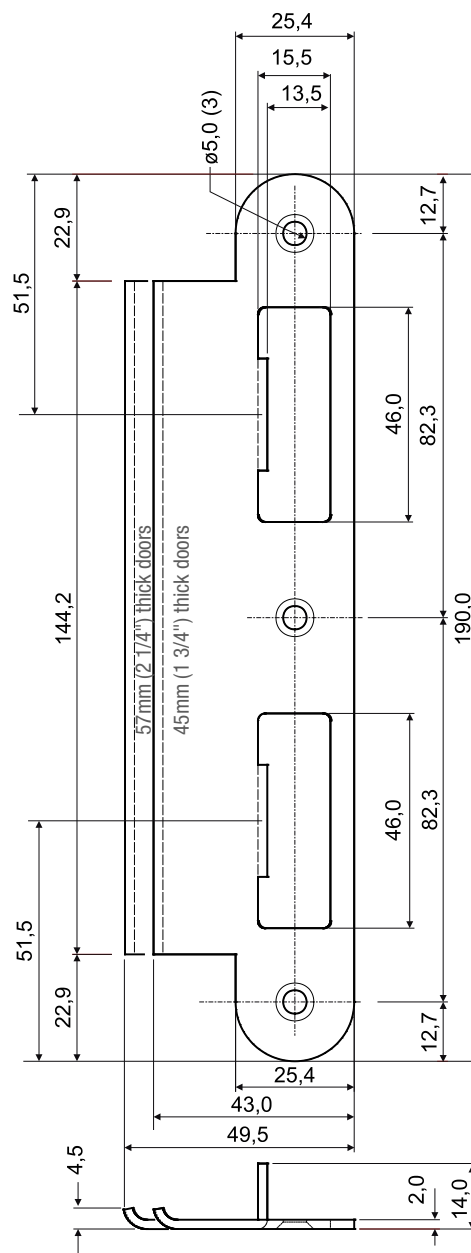
Top & Bottom Keeper

Description	Part Number
Keeper for 45mm (1 3/4") thick doors	9-C4776-45-0-*
Keeper for 57mm (2 1/4") thick doors	9-C4776-57-0-*



Middle Keeper

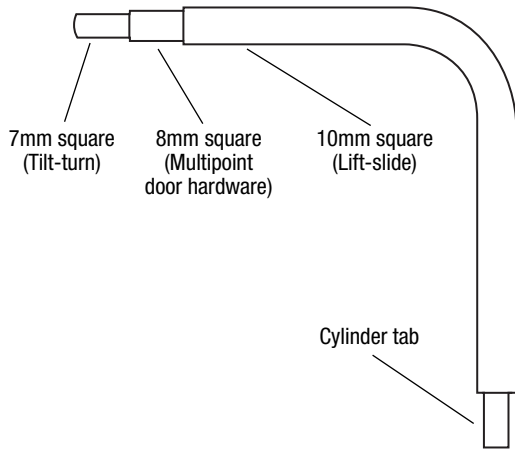
Description	Part Number
Keeper for 45mm (1 3/4") thick doors	9-C4777-45-0-*
Keeper for 57mm (2 1/4") thick doors	9-C4777-57-0-*





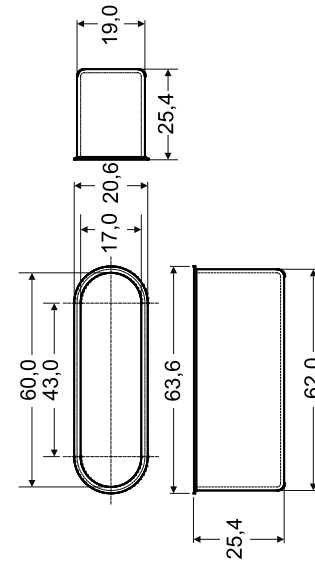
Construction Key

Description	Part Number
Construction key	9-U0001-01-0-0



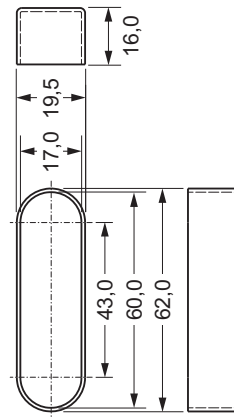
Plastic Cup - With Edge

Description	Part Number
Plastic cup	9-C4765-00-0-6



Plastic Cup - No Edge

Description	Part Number
Plastic cup	9-C4765-00-A-6

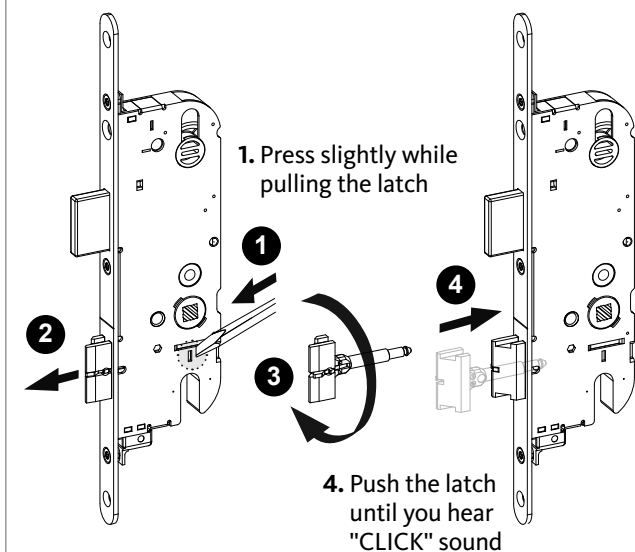


Door Multi-point Locking System

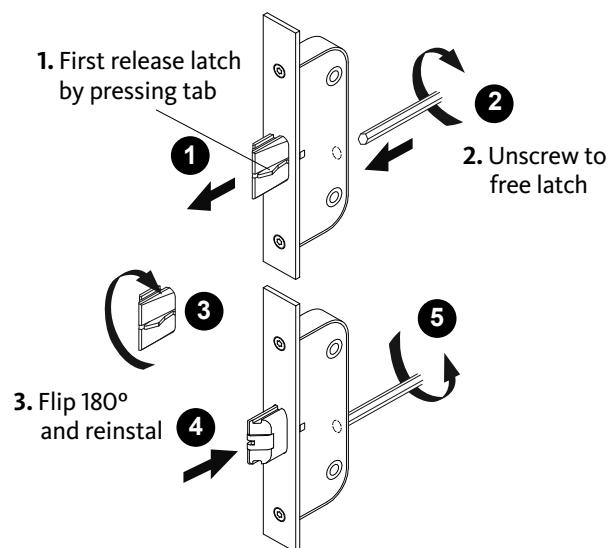
How to Reverse Latches & Connect Extension to Door Lock



REVERSE LATCH (Use flathead screwdriver)

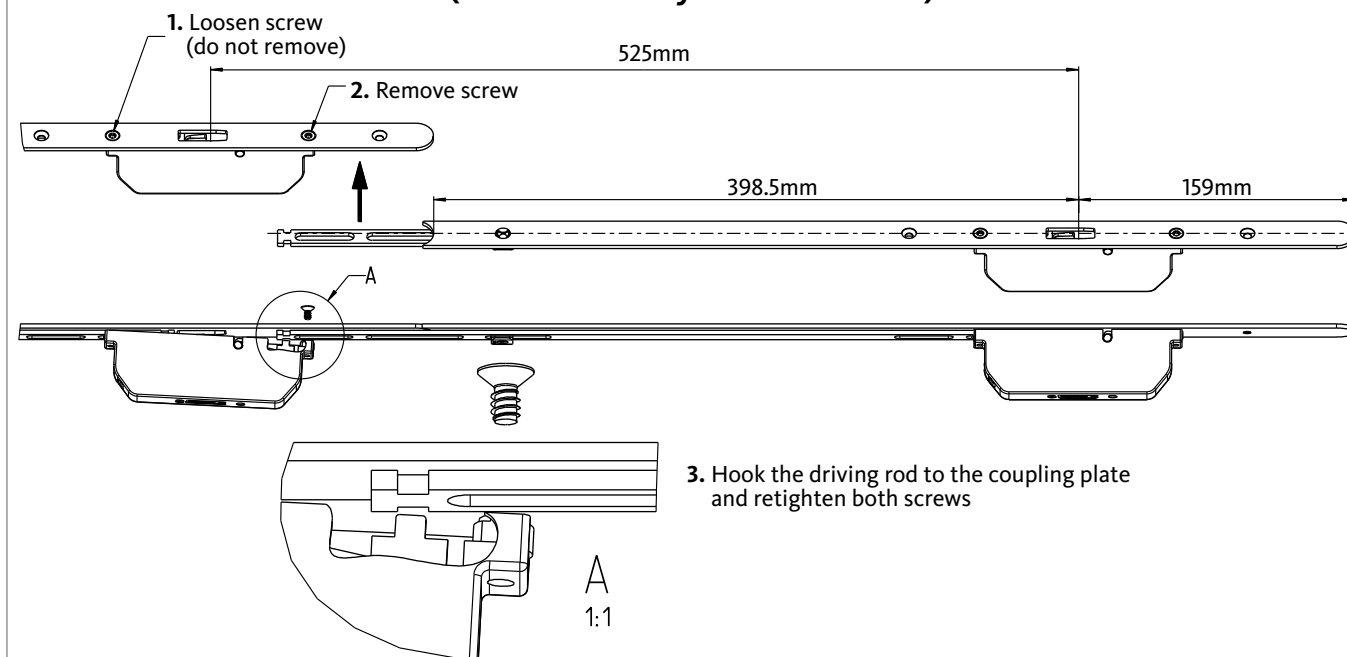


REVERSE AUTOMATIC LATCHES (Use 4mm Allen T-key H-00345-04-0-0)



03
3

CONNECT SH2 & AUTOMATIC EXTENSIONS TO DOOR LOCK (Use Torx 15 T-key H-00346-15-0-0)

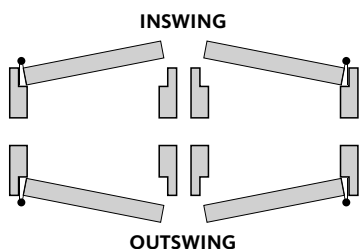
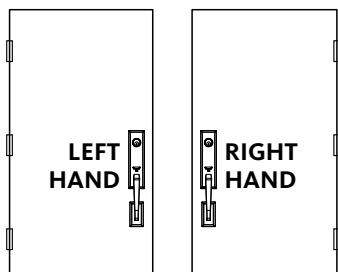


Door Multi-point Locking System

Operation & Maintenance Instructions



HANDLE HANDING (VIEWED FROM OUTSIDE)



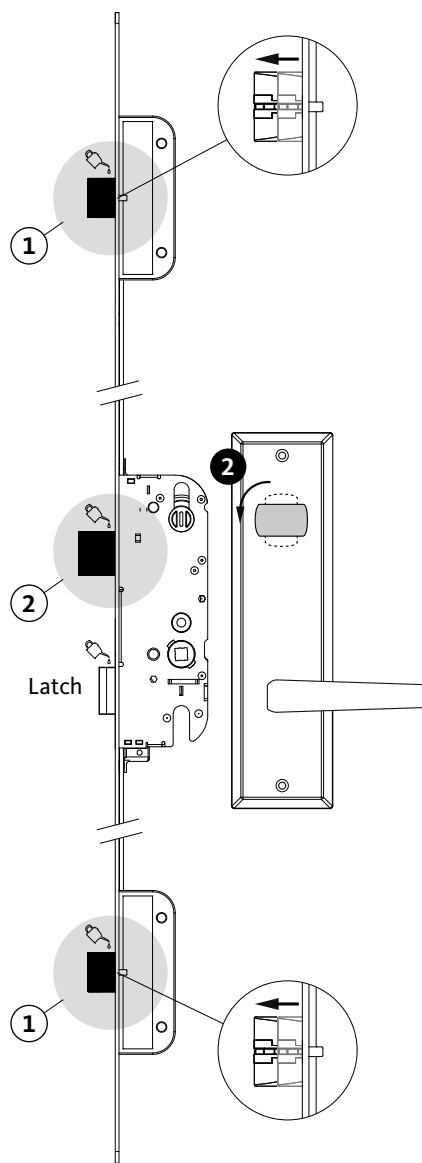
CARE & MAINTENANCE

To prevent build-up of surface contaminants possibly resulting in hardware surface deterioration and in some cases appearance of rust; we recommend to wipe down with soft cloth all visible surfaces with warm water and mild soap. Then wipe the same surfaces with a clean cloth and warm water only and let surfaces dry completely. This procedure should be done a minimum of 2 times per year. The use of caustic cleansers or chemicals should be avoided.

For the handle set, all finishes except Oil Rubbed Bronze (O5), it is strongly recommended to apply a non-abrasive automotive wax to protect the surface.

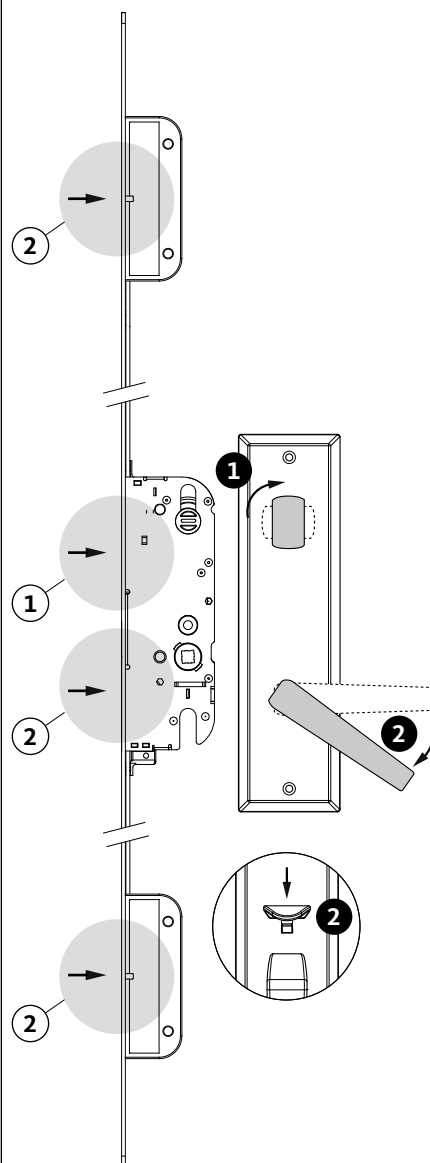
In order to ensure the smooth operation of the lock over a long period of time, it is necessary to lubricate all movable parts and locking points (🔑) using acid and resin-free lubricants.

CLOSING & LOCKING



- ① **DON'T NEED TO LIFT THE HANDLE**
As soon as the door closed, the Automatic latchbolts instantly throw 20mm and are secured to prevent them from being forced back.
- ② Operate the cylinder or the knob with a single 90° turn to engage the dead bolt and lock the mechanism.

UNLOCKING & OPENING



- ① Withdraw the dead bolt and release the mechanism by operating the cylinder or the knob with a single 90° turn.
- ② Press down the lever (inside) or the thumb latch (outside) to withdraw the locking points and open the door.



A series of horizontal lines for notes, spanning the width of the page.



WINDOW TECHNOLOGY
DOOR TECHNOLOGY
AUTOMATIC ENTRANCE SYSTEMS
BUILDING MANAGEMENT SYSTEMS

QUÉBEC / MARITIMES

Ferco Ferrures de Bâtiment Inc.
2000, Rue Berlier
Laval, QC H7L 4S4
Canada

T 450 973-1437
1 800 355-8810
F 450 973-7661
ferco@ferco.ca

ONTARIO / WESTERN PROVINCES

Ferco Architectural Hardware Inc.
T 905 282-9588
1 800 668-5310
F 905 282-9915

UNITED STATES

Ferco Architectural Hardware Inc.
T 1 800 927-1097
F 1 888 454-0161

www.ferco.ca

Securing technology for you

