



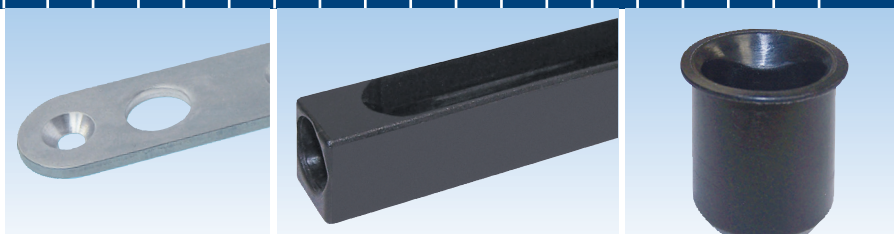
WINDOW TECHNOLOGY  
DOOR TECHNOLOGY  
AUTOMATIC ENTRANCE SYSTEMS  
BUILDING MANAGEMENT SYSTEMS



DOOR TECHNOLOGY – ORDER CATALOG | SECTION 03.6



## Astragal Mortise Lock & Flushbolts



Securing technology for you







# 03.6

## Astragal Mortise Lock & Flushbolts

- **AML**

Astragal Mortise Lock .....	03.6.5
Driving Rods.....	03.6.6
Faceplates.....	03.6.7
AML Guides and Strike Cups.....	03.6.8

- **AMLOC**

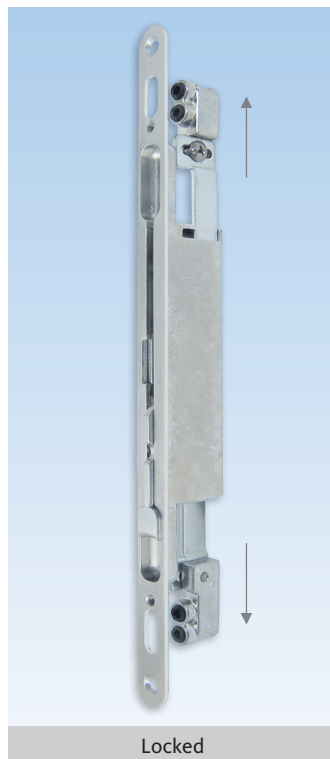
Astragal Mortise Lock Off-Center.....	03.6.10
Driving Rods.....	03.6.11
Faceplates.....	03.6.12
AMLOC Guides and Strike Cups.....	03.6.13

Flushbolts .....	03.6.16
Wood Mount Displays .....	03.6.17



# AML Astragal Mortise Lock

## Backset Adjustable for Astragal 12.7 - 28mm



### Astragal Mortise Lock

Description	Color	PU	Part Number
Mortise lock ( AML )	Zinc	10	6-C7250-19-0-0
* = Color    PU = Packaging Unit			

### Additional information

- Used on the inactive panel of double doors
- Shoot extends to 25mm (adjustable by reducing rod length)
- Non-handed mechanism
- 20mm faceplate cover with radius ends
- Backset adjustable for astragal thickness 12.7mm to 28mm
- Use with 10mm round rods
- Refer to installation drawing " AML 6-C7250-19-0-0 Cut-Out"
- AML fastening screws are not included. Sizing is dependent on astragal thickness

# Driving Rods

for AML Mortise Lock



Round Rods (with/without thread)

## Top and Bottom Round Rods For AML

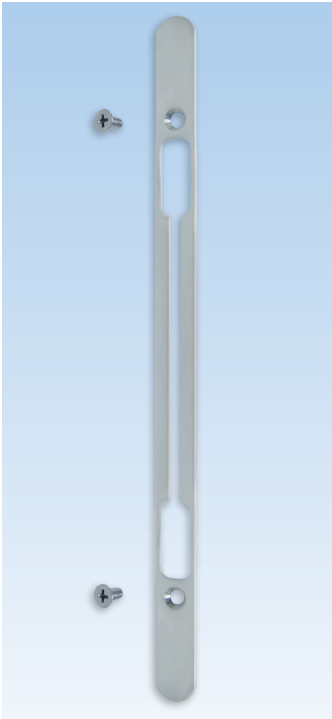
Description	Color	PU	Part Number
<b>Top rods fixed size</b>			
641mm (25 1/4") long for door slab 79"	Zinc	10	9-C5212-00-0-3
1047mm (41 1/4") long for door slab 95"	Zinc	10	9-C5214-00-0-3
<b>Additional Top rods</b>			
603mm (23 3/4") long	Zinc	10	9-U1011-00-0-3
654mm (25 3/4") long	Zinc	10	9-U1012-00-0-3
705mm (27 3/4") long	Zinc	10	9-U1013-00-0-3
1010mm (39 3/4") long	Zinc	10	9-U1014-00-0-3
1194mm (47") long	Zinc	10	9-U1020-00-0-3
1619mm (63 3/4") long	Zinc	10	9-U1015-00-0-3
<b>Bottom rod fixed size – Mortise lock height 1280mm</b>			
1200mm (47 1/4") long	Zinc	10	9-U1010-00-0-3
* = Color		PU = Packaging Unit	

## Additional information

- Made of zinc plated steel
- Ø 10mm rods with beveled tip
- Can be cut to size
- Use with astragal mortise lock (6-C7250-19-0-0)

# Faceplate

Astragal Mortise Lock Faceplate Covers

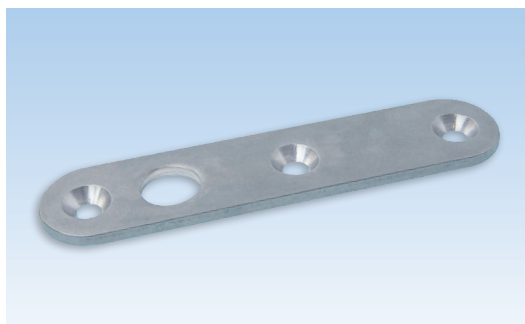


Mortise Lock Faceplate Cover			
Description	Color	PU	Part Number
Faceplate for Mortise Lock	Dark Bronze PC	50	6-C7260-00-0-5
	Black PC	50	6-C7260-00-0-6
	Stainless Steel	50	6-C7260-00-0-8B
* = Color      PU = Packaging Unit			
<div><div>5</div><div>6</div><div>8B</div></div>			

- Additional information**
- 20mm Faceplate cover made of stainless steel 304
  - Use with astragal mortise lock (6-C7250-19-0-0)
  - Supplied with installation screws



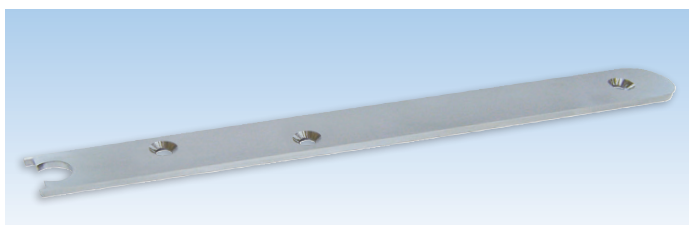
Faceplate screws			
Description	Color	PU	Part Number
M5 x10 mm Screw	Dark Bronze PC	1000	9-C5129-10-0-5
	Black PC	1000	9-C5129-10-0-6
	Stainless Steel	1000	9-C5129-10-0-8B
* = Color      PU = Packaging Unit			
<div><div>5</div><div>6</div><div>8B</div></div>			

**Reinforcement strip and guide for top and bottom door edges**

Description	Color	PU	Part Number
Guide	SS	1	9-C4310-00-0-8B
* = Color      PU = Packaging Unit			

**Additional information**

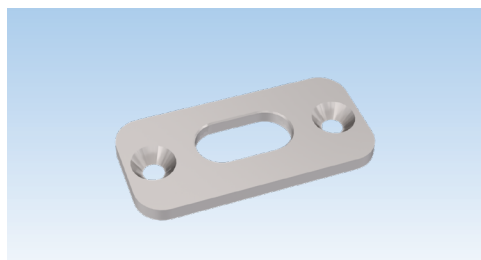
- Made of stainless steel
- Reinforces the shoot bolts for higher performance
- No fastening screws included
- 82.5mm x 18.5mm

**Reinforcing Strip 20mm**

Description	Color	PU	Part Number
Reinforcing strip for shoot bolts	Stainless Steel	1	9-C4316-00-0-8B
* = Color      PU = Packaging Unit			

**Additional information**

- Made of stainless steel
- Reinforced the edges of shoot bolts for higher performance
- No fastening screws included
- 200mm x 20mm

**AML keeper**

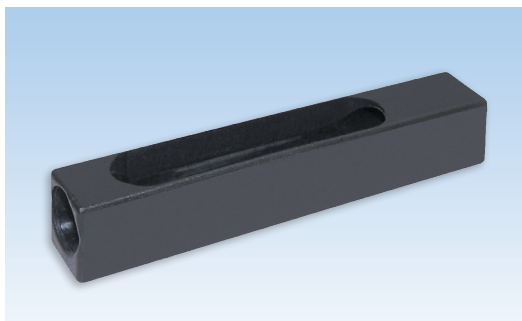
Description	Color	PU	Part Number
Keeper 52mm	Stainless Steel	1	9-C4308-00-K-8B
* = Color      PU = Packaging Unit			

**Fastening Screws**

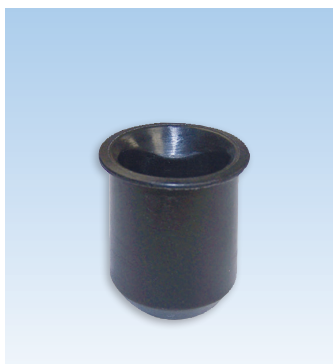
Description	Color	PU	Part Number
D1 screws	Stainless Steel	1000	9-C5362-32-0-8
* = Color		PU = Packaging Unit	

**Additional information**

- Stainless steel lock fastening screws 32mm
- Type D1 with self-drilling spiral point and high duplex thread with “Quadrex” socket
- Sharp tip for quick drive

03  
6
**AML Guide for Top and Bottom round rods and shootbolt**

Description	Color	PU	Part Number
Guide	Black	1	9-C0540-00-0-0
* = Color		PU = Packaging Unit	

**Adjustable Strike Cups 22mm and 27mm Deep**

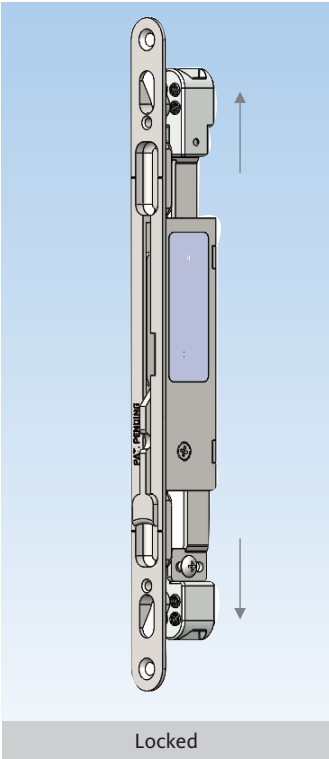
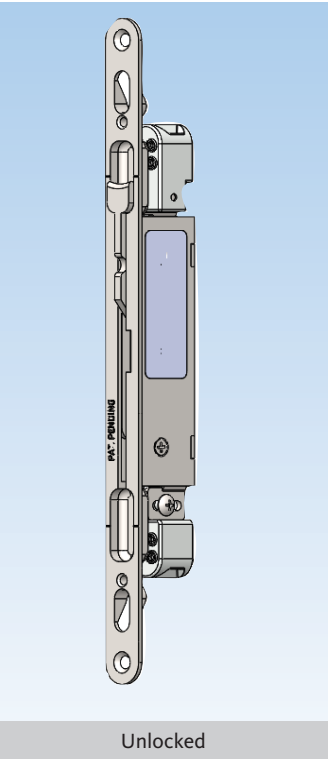
Description	Color	PU	Part Number
22mm sleeve for shoot bolts	Black	100	9-C4306-22-0-0
27mm sleeve for shoot bolts	Black	100	9-C4306-27-0-0
* = Color		PU = Packaging Unit	

**Additional information**

- Made of reinforced nylon
- In and out adjustment of 1mm
- Allows a lateral adjustment of  $\pm 2.8$ mm
- Possible pull in of 5mm
- For  $\varnothing$  10mm round shootbolts

# AMLOC Astragal Mortise Lock Off-Center

With off-centered drive rods



### Astragal Mortise Lock with Off-centered drive rods

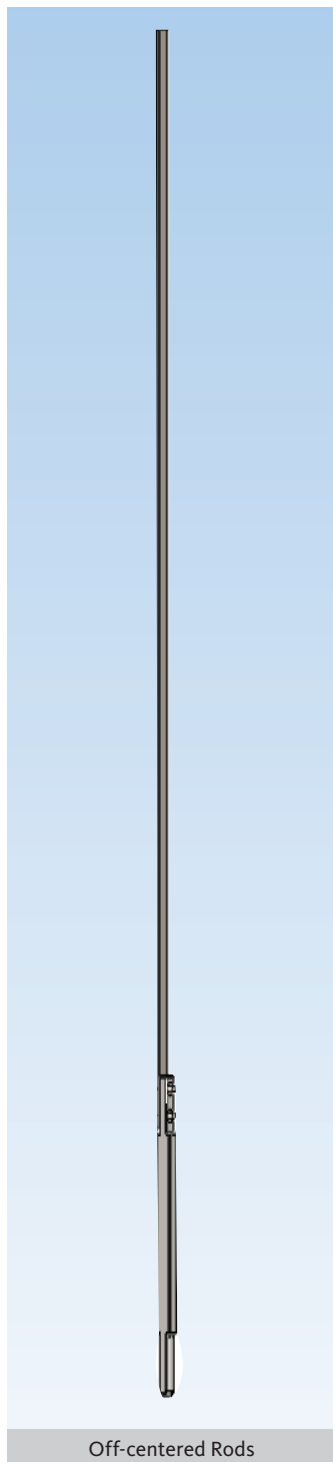
Description	Color	PU	Part Number
AMLOC	Zinc	10	6-C7252-19-0-0
* = Color		PU = Packaging Unit	

### Additional information

- Used on the inactive panel of double doors
- Shoot extends to 25mm (adjustable by reducing rod length)
- Non-handed mechanism
- 20mm faceplate cover with radius end
- Self-adjusting drive rod connectors for astragal 12.7mm to 28mm
- Use with off-centered rods
- Can be used with one depth (See installation drawing D-2017-002-01)
- Fastening screws are not included.  
Fastening screws can be fastened through the AMLOC into the door slab

# Driving Rods

## for Off-Centered Mortise Lock



### Rods for AMLOC

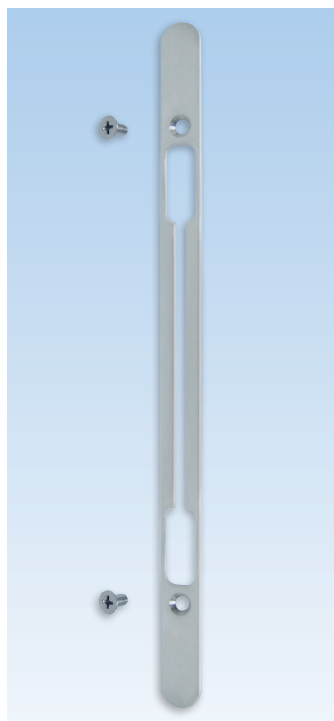
Description	Color	PU	Part Number
Top fixed rod size off-centered			
647mm (25 1/2") long for door slab 79"	SS	10	6-C4400-06-0-1
1053mm (41 1/2") long for door slab 95"	SS	10	6-C4400-10-0-1
Bottom rod off-centered			
1200mm (47 1/4") long for door slab 79" and 95"	SS	10	6-C4400-12-0-1
* = Color		PU = Packaging Unit	

### Additional information

- 10mm shoot-bolts made of stainless steel
- Ø 10mm shoot-bolts with beveled tip
- Steel flat drive rods can be easily cut to size
- Use only with AMLOC (6-C7252-19-0-0)

# Faceplate

## Astragal Mortise lock faceplate covers



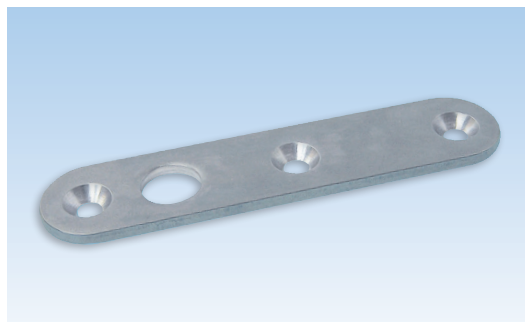
### Mortise Lock Faceplate

Description	Color	PU	Part Number
Faceplate for Mortise Lock	Dark Bronze PC	50	6-C7260-00-0-5
	Black PC	50	6-C7260-00-0-6
	Stainless Steel	50	6-C7260-00-0-8B
* = Color		PU = Packaging Unit	



### Additional information

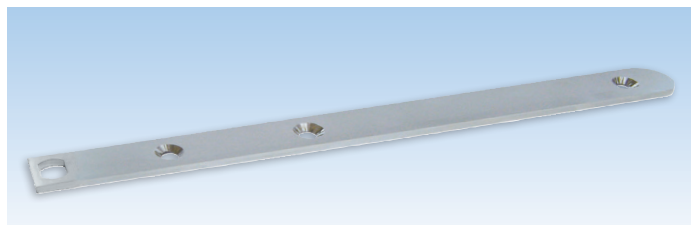
- 20mm Faceplate cover made of stainless steel 304
- Use with astragal mortise lock (6-C7252-19-0-0)
- Supplied with installations screws

**Reinforcement strip and guide for top and bottom door edges**

Description	Color	PU	Part Number
Guide	SS	1	9-C4310-00-0-8B
* = Color      PU = Packaging Unit			

**Additional information**

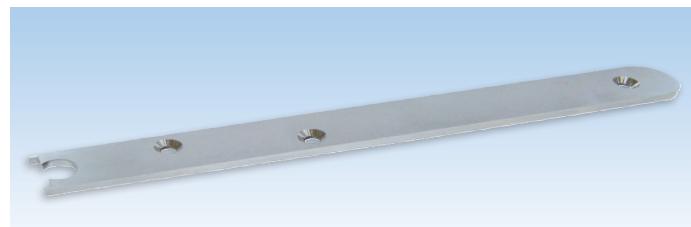
- Made of stainless steel
- Reinforces the shoot bolts for higher performance
- No fastening screws included
- 82.5mm x 18.5mm

03  
6
**Reinforcing Strip 16mm**

Description	Color	PU	Part Number
Reinforcing strip for shoot bolts	Stainless Steel	1	9-C4315-00-0-8B
* = Color      PU = Packaging Unit			

**Additional information**

- Made of stainless steel
- Reinforced the edges of shoot bolts for higher performance
- Recommended for PVC and aluminum
- No fastening screws included
- 200mm x 16mm

**Reinforcing Strip 20mm**

Description	Color	PU	Part Number
Reinforcing strip for shoot bolts	Stainless Steel	1	9-C4316-00-0-8B
* = Color      PU = Packaging Unit			

**Additional information**

- Made of stainless steel
- Reinforced the edges of shoot bolts for higher performance
- Recommended for timber
- No fastening screws included
- 200mm x 20mm

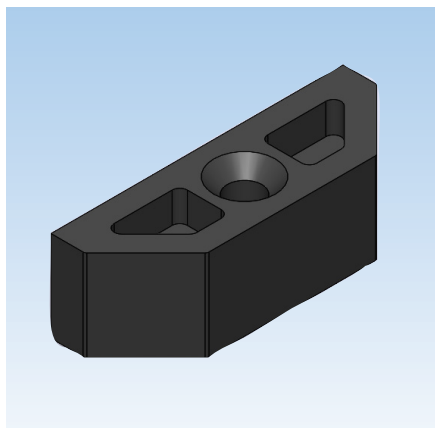


#### Fastening Screws

Description	Color	PU	Part Number
D1 screws	Stainless Steel	1000	9-C5362-32-0-8
* = Color		PU = Packaging Unit	

#### Additional information

- Stainless steel lock fastening screws 32mm
- Type D1 with self-drilling spiral point and high duplex thread with "Quadrex" socket
- Sharp tip for quick drive

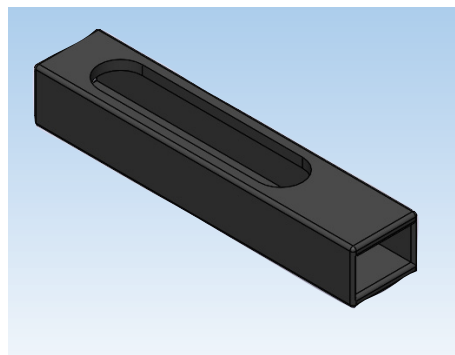


#### AMLOC Middle Guide for Drive Rods

Description	Color	PU	Part Number
Middle Guide	Black	1	9-C0550-00-0-6
* = Color		PU = Packaging Unit	

#### Additional information

- Will support and guide flat drive rod



#### AMLOC Guide for Top and Bottom stainless 10 mm shoot-bolts

Description	Color	PU	Part Number
Guide	Black	1	9-C0541-00-0-6
* = Color		PU = Packaging Unit	



#### Adjustable Strike Cups 22 and 27mm Deep

Description	Color	PU	Part Number
22mm sleeve for shoot bolts	Black	100	9-C4306-22-0-0
27mm sleeve for shoot bolts	Black	100	9-C4306-27-0-0
* = Color		PU = Packaging Unit	

#### Additional information

- Made of reinforced nylon
- In and out adjustment of 1mm
- Allows a lateral adjustment of  $\pm 2.8$ mm
- Possible pull in of 5mm
- For  $\varnothing$  10mm round shootbolts

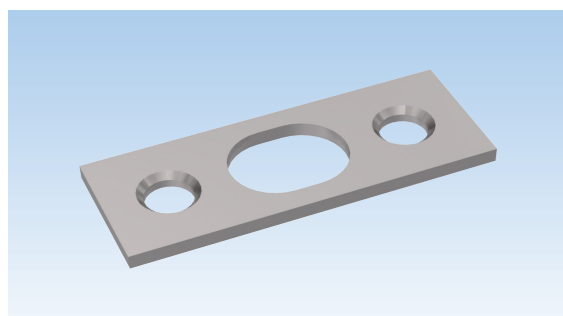


#### Flush Bolt

Description	Color	PU	Part Number
Spring Shoot Bolt 200 x 20mm	Zinc	100	6-C4308-20-0-1
* = Color		PU = Packaging Unit	

#### Additional information

- Used on the inactive panel of double doors
- Shoot projection 16.5mm
- Zinc plated steel
- Easy operation with slider button
- Leaf spring secures lock at locked position
- Dimensions : 200mm x 20mm x 12,5mm
- Refer to installation drawing "D-2019-011-01"



#### Shoot bolt Strike plate

Description	Color	PU	Part Number
Strike plate	Stainless Steel	100	6-UK2212-AB-0-SS
* = Color		PU = Packaging Unit	

# Wood Mount Display

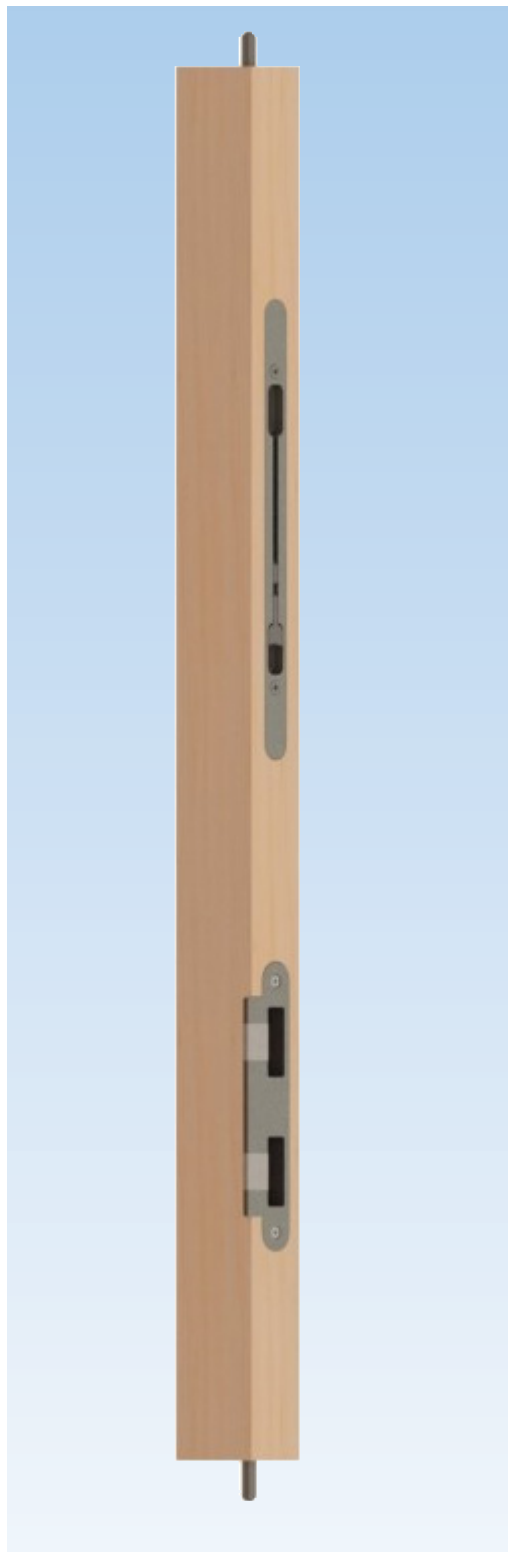
for Astragal Mortise Lock



Wood Mount Display with Astragal Mortise Lock		
Description	PU	Part Number
AML Wood mount display	1	6-C9620-00-0-9
* = Color		PU = Packaging Unit

# Wood Mount Display

for Off-Centered Astragal Mortise Lock



## Wood Mount Display with Off-centered Astragal Mortise Lock

Description	PU	Part Number
AMLOC Wood mount display	1	6-C9620-01-0-9
* = Color		PU = Packaging Unit



WINDOW TECHNOLOGY  
DOOR TECHNOLOGY  
AUTOMATIC ENTRANCE SYSTEMS  
BUILDING MANAGEMENT SYSTEMS

QUÉBEC / MARITIMES

Ferco Ferrures de Bâtiment Inc.  
2000, Rue Berlier  
Laval, QC H7L 4S4  
Canada

T 450 973-1437  
1 800 355-8810  
F 450 973-7661  
ferco@ferco.ca

ONTARIO / WESTERN PROVINCES

Ferco Architectural Hardware Inc.  
T 905 282-9588  
1 800 668-5310  
F 905 282-9915

UNITED STATES

Ferco Architectural Hardware Inc.  
T 1 800 927-1097  
F 1 888 454-0161

[www.ferco.ca](http://www.ferco.ca)

Securing technology for you

